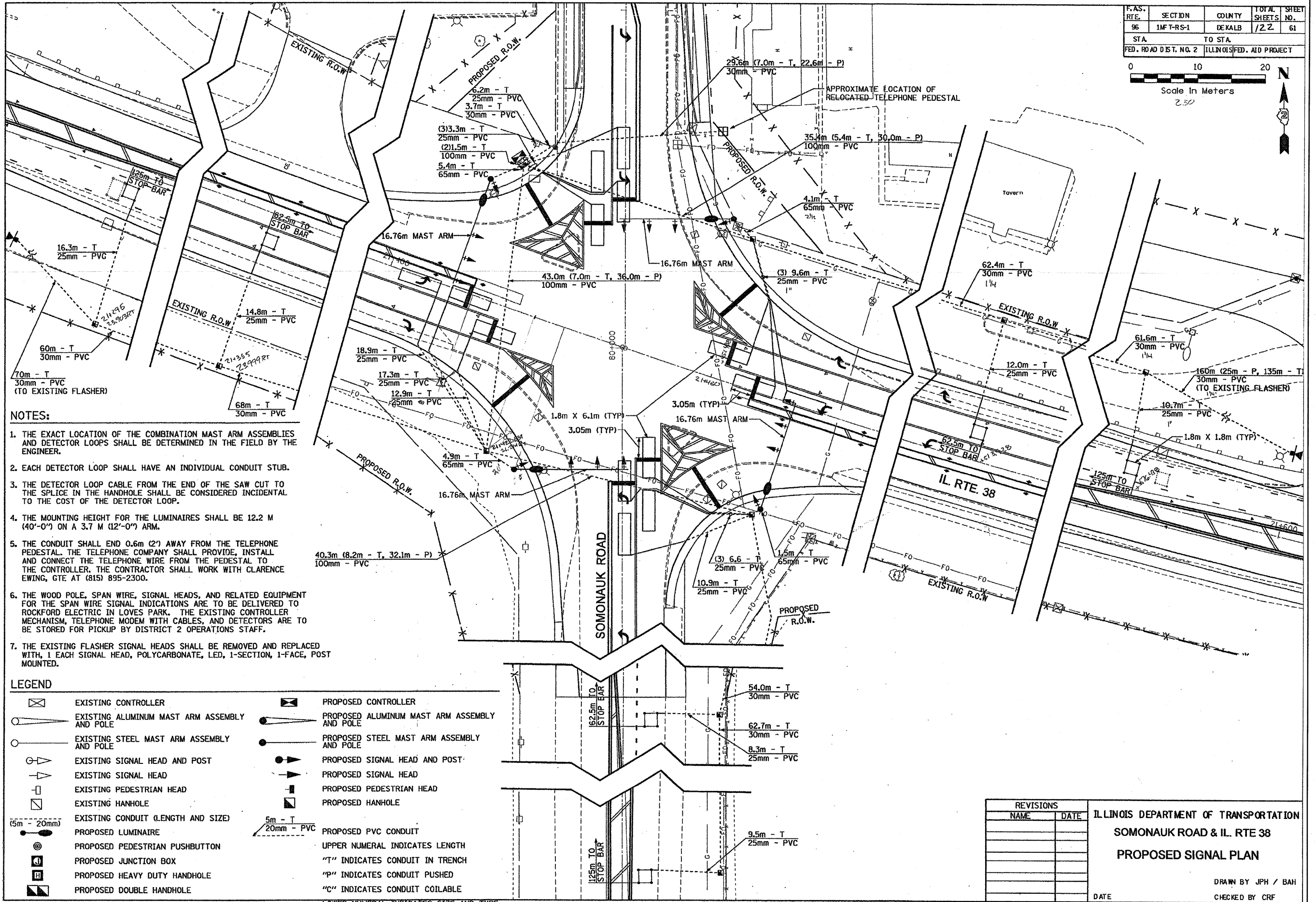
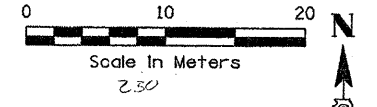


F.A.S. RTE.	SECTION	COUNTY	TOTAL SHEETS	SHEET NO.
96	1M-T-RS-1	DEKALB	72	61
STA.		TO STA.		
FED. ROAD DIST. NO. 2		ILLINOIS FED. AID PROJECT		



NOTES:

1. THE EXACT LOCATION OF THE COMBINATION MAST ARM ASSEMBLIES AND DETECTOR LOOPS SHALL BE DETERMINED IN THE FIELD BY THE ENGINEER.
2. EACH DETECTOR LOOP SHALL HAVE AN INDIVIDUAL CONDUIT STUB.
3. THE DETECTOR LOOP CABLE FROM THE END OF THE SAW CUT TO THE SPLICE IN THE HANDHOLE SHALL BE CONSIDERED INCIDENTAL TO THE COST OF THE DETECTOR LOOP.
4. THE MOUNTING HEIGHT FOR THE LUMINAIRES SHALL BE 12.2 M (40'-0") ON A 3.7 M (12'-0") ARM.
5. THE CONDUIT SHALL END 0.6m (2') AWAY FROM THE TELEPHONE PEDESTAL. THE TELEPHONE COMPANY SHALL PROVIDE, INSTALL AND CONNECT THE TELEPHONE WIRE FROM THE PEDESTAL TO THE CONTROLLER. THE CONTRACTOR SHALL WORK WITH CLARENCE EWING, GTE AT (815) 895-2300.
6. THE WOOD POLE, SPAN WIRE, SIGNAL HEADS, AND RELATED EQUIPMENT FOR THE SPAN WIRE SIGNAL INDICATIONS ARE TO BE DELIVERED TO ROCKFORD ELECTRIC IN LOVES PARK. THE EXISTING CONTROLLER MECHANISM, TELEPHONE MODEM WITH CABLES, AND DETECTORS ARE TO BE STORED FOR PICKUP BY DISTRICT 2 OPERATIONS STAFF.
7. THE EXISTING FLASHER SIGNAL HEADS SHALL BE REMOVED AND REPLACED WITH, 1 EACH SIGNAL HEAD, POLYCARBONATE, LED, 1-SECTION, 1-FACE, POST MOUNTED.

LEGEND

	EXISTING CONTROLLER		PROPOSED CONTROLLER
	EXISTING ALUMINUM MAST ARM ASSEMBLY AND POLE		PROPOSED ALUMINUM MAST ARM ASSEMBLY AND POLE
	EXISTING STEEL MAST ARM ASSEMBLY AND POLE		PROPOSED STEEL MAST ARM ASSEMBLY AND POLE
	EXISTING SIGNAL HEAD AND POST		PROPOSED SIGNAL HEAD AND POST
	EXISTING SIGNAL HEAD		PROPOSED SIGNAL HEAD
	EXISTING PEDESTRIAN HEAD		PROPOSED PEDESTRIAN HEAD
	EXISTING HANHOLE		PROPOSED HANHOLE
	EXISTING CONDUIT (LENGTH AND SIZE)		PROPOSED LUMINAIRE
	PROPOSED LUMINAIRE		PROPOSED PVC CONDUIT
	PROPOSED PEDESTRIAN PUSHBUTTON		UPPER NUMERAL INDICATES LENGTH
	PROPOSED JUNCTION BOX		"T" INDICATES CONDUIT IN TRENCH
	PROPOSED HEAVY DUTY HANDHOLE		"P" INDICATES CONDUIT PUSHED
	PROPOSED DOUBLE HANDHOLE		"C" INDICATES CONDUIT COILABLE

REVISIONS	
NAME	DATE

ILLINOIS DEPARTMENT OF TRANSPORTATION
SOMONAUK ROAD & IL. RTE 38
PROPOSED SIGNAL PLAN

DRAWN BY JPH / BAH
 CHECKED BY CRF

FILE NAME =
 c:\pw_work\pwidot\dunoanbd\0184257\036745-shr-cover.dgn

USER NAME = dunoanbd
 DESIGNED -
 DRAWN -
 PLOT SCALE = 50.0000' / IN.
 PLOT DATE = Feb 13, 2009 - 11:13:43 AM

CHECKED -
 DATE -

REVISED -
 REVISED -
 REVISED -
 REVISED -

STATE OF ILLINOIS
 DEPARTMENT OF TRANSPORTATION

FOR INFORMATION ONLY

SCALE: SHEET NO. OF SHEETS STA. TO STA.

F.A.P. RTE.	SECTION	COUNTY	TOTAL SHEETS	SHEET NO.
567	(7,6)RS-2	DEKALB	30	22
CONTRACT NO. 66745				
ILLINOIS FED. AID PROJECT				