

PHASE DESIGNATION DIAGRAM

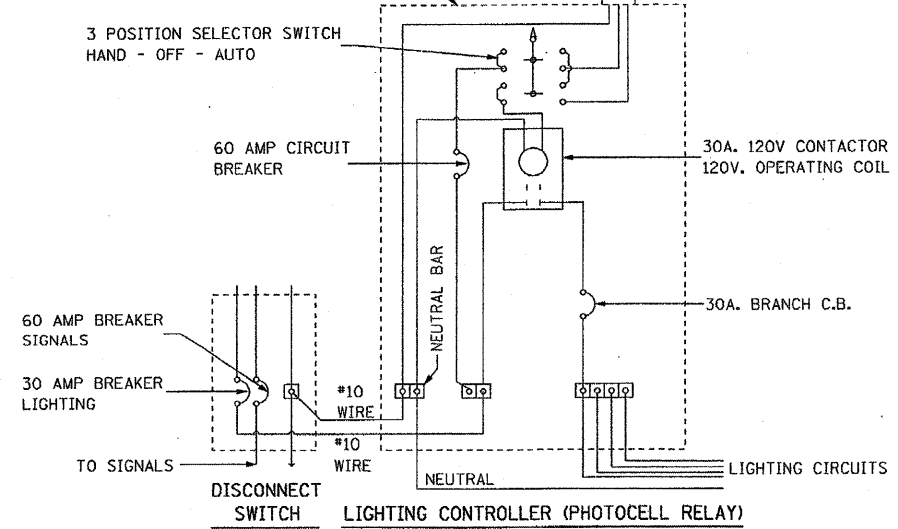
LEGEND
 VEHICULAR MOVEMENT
 * NUMBER REFERS TO ASSOCIATED PHASE

DETECTOR ASSIGNMENT

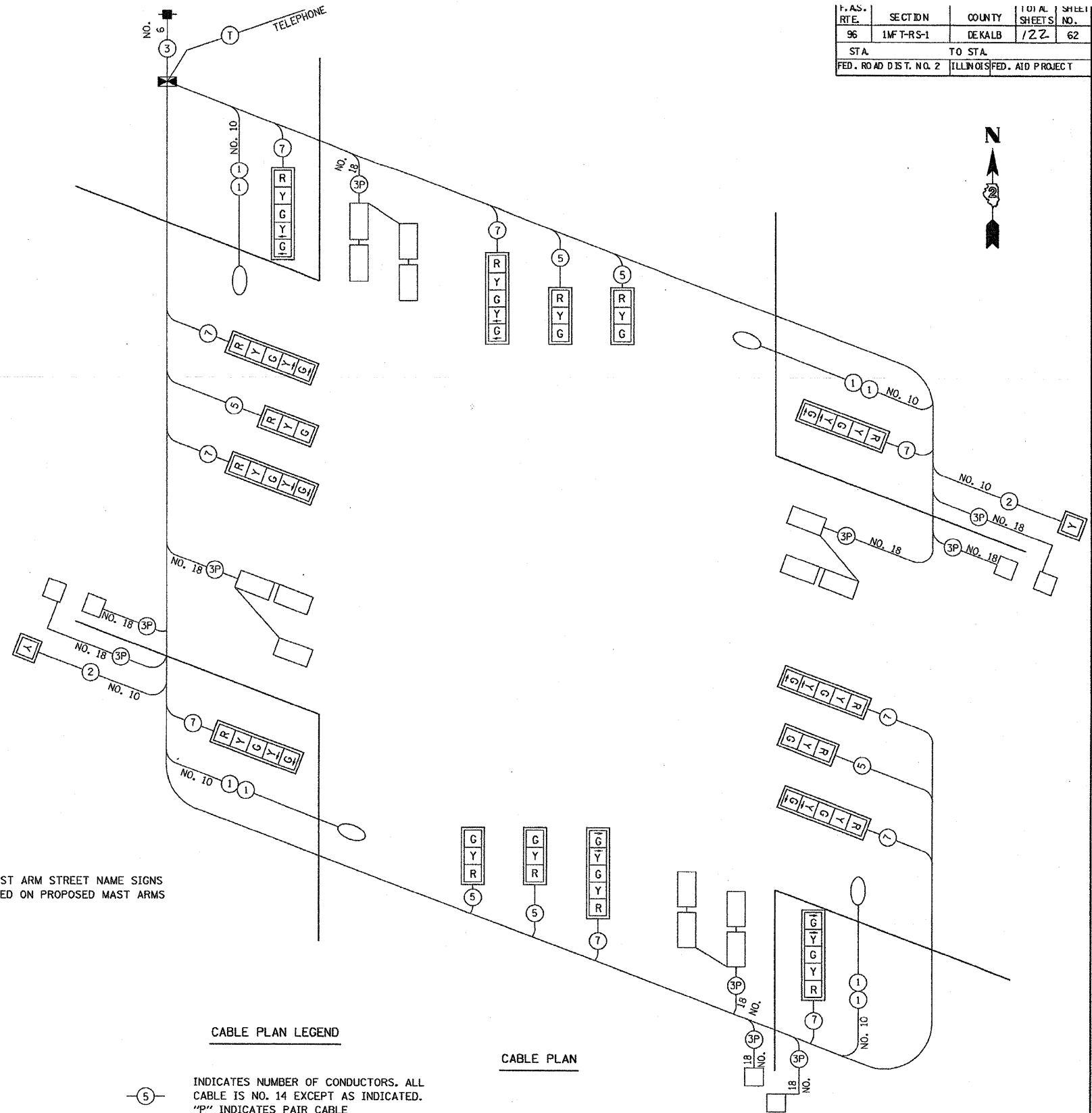
| DETECTOR | PHASE NO. | DIRECTION |
|----------|-----------|----------------|
| A | 4 | SB PRESENT |
| B | 7 | SB LEFT TURN |
| C | 8 | NB FAR ADVANCE |
| D | 8 | NB MID ADVANCE |
| E | 8 | NB PRESENT |
| F | 3 | NB LEFT TURN |
| G | 2 | EB FAR ADVANCE |
| H | 2 | EB MID ADVANCE |
| I | 2 | EB PRESENT |
| J | 5 | EB LEFT TURN |
| K | 6 | WB FAR ADVANCE |
| L | 6 | WB MID ADVANCE |
| M | 6 | WB PRESENT |
| N | 1 | WB LEFT TURN |

CAST ALUMINUM CABINET 450H X 300W X 200D (18" H X 12" W X 8" D). ALUMINUM DOOR WITH STANDARD TRAFFIC SIGNAL LOCK AND KEY.

PHOTOCELL WITH INTEGRAL SURGE ARRESTER



NOTE: EXISTING MAST ARM STREET NAME SIGNS TO BE PLACED ON PROPOSED MAST ARMS



CABLE PLAN LEGEND

INDICATES NUMBER OF CONDUCTORS. ALL CABLE IS NO. 14 EXCEPT AS INDICATED. "P" INDICATES PAIR CABLE
 NEW 12" SIGNAL HEAD WITH BACKPLATE
 LUMINAIRE, 400 WATT

CABLE PLAN

| REVISIONS | |
|-----------|------|
| NAME | DATE |
| | |
| | |
| | |
| | |
| | |
| | |
| | |
| | |
| | |
| | |

ILLINOIS DEPARTMENT OF TRANSPORTATION
 SOMONAUK ROAD & IL. RTE. 38
 CABLE PLAN AND PHASE DESIGNATION DIAGRAM

DATE _____ DRAWN BY JPH / BAH
 CHECKED BY CRF

| | | | |
|-------------|----------------------|------------|-----------|
| FILE NAME = | USER NAME = duncanbd | DESIGNED - | REVISED - |
| | | DRAWN - | REVISED - |
| | | CHECKED - | REVISED - |
| | | DATE - | REVISED - |

STATE OF ILLINOIS
 DEPARTMENT OF TRANSPORTATION

FOR INFORMATION ONLY

| | | | | | | |
|--------|-----------|----|--------|------|----|------|
| SCALE: | SHEET NO. | OF | SHEETS | STA. | TO | STA. |
|--------|-----------|----|--------|------|----|------|

| | | | | |
|---------------------------|-----------|--------|--------------|-----------|
| F.A.P. RTE. | SECTION | COUNTY | TOTAL SHEETS | SHEET NO. |
| 567 | (7,6)RS-2 | DEKALB | 30 | 23 |
| CONTRACT NO. 66745 | | | | |
| ILLINOIS FED. AID PROJECT | | | | |