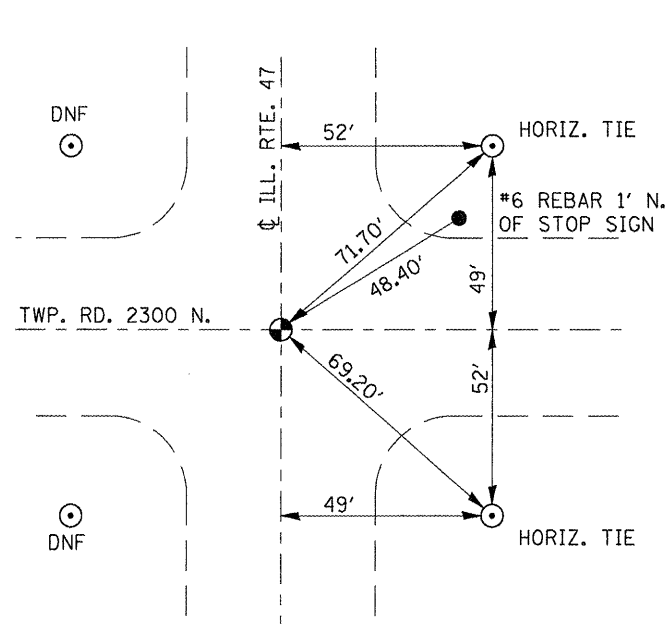


1/17/09
 FOUND BRASS DSK.
 ON ϕ ILL. RTE. 47
 JST, RM, WDM III

SEC. 27, W. QTR. COR. 29N. 7E.
THIRD PM LIVINGSTON CO.

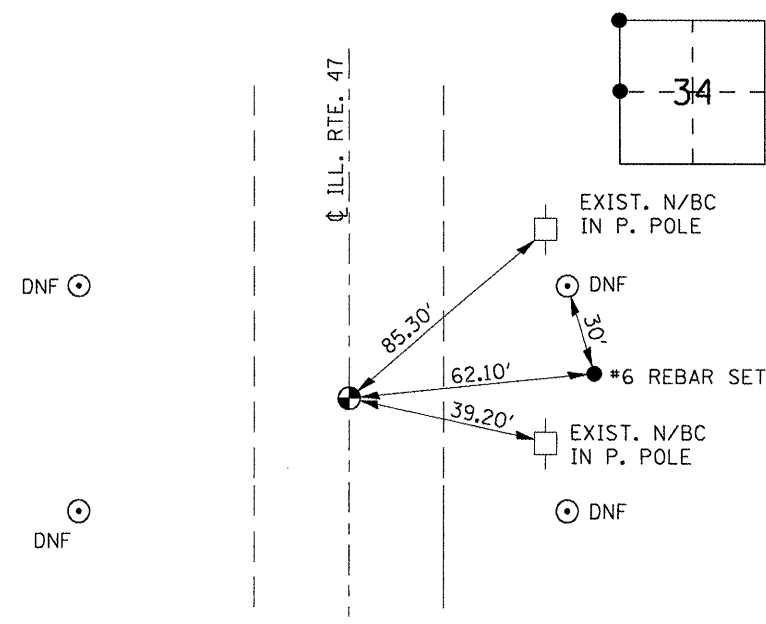
STA. 519+44.10



1/17/09
 FOUND BRASS DISK $\pm 0.5'$
 N. OF ϕ ILL. RTE 47
 JST, RM, WDM III

SEC. 27, N.W. COR. 29N. 7E.
THIRD PM LIVINGSTON CO.

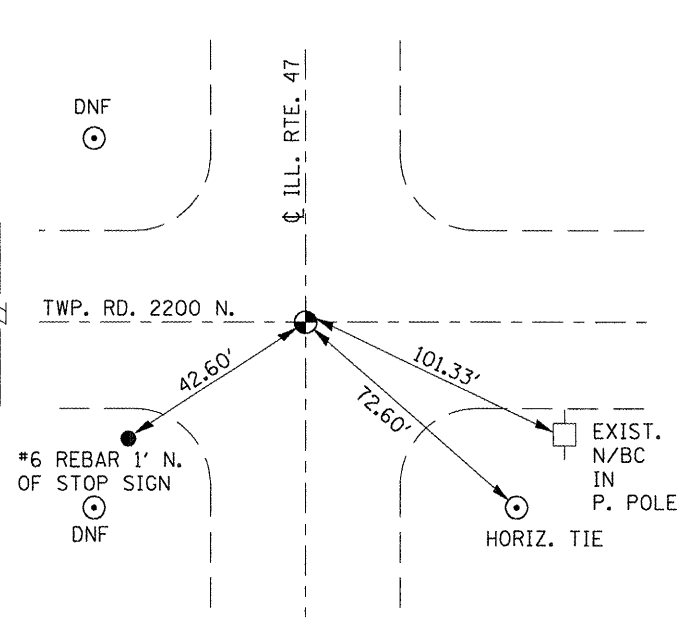
STA. 492+95.23



1/17/09
 FOUND BRASS DISK.
 ON ϕ ILL. RTE. 47
 JST, RM, WDM III

SEC. 34, W. QTR. COR. 29N. 7E.
THIRD PM LIVINGSTON CO.

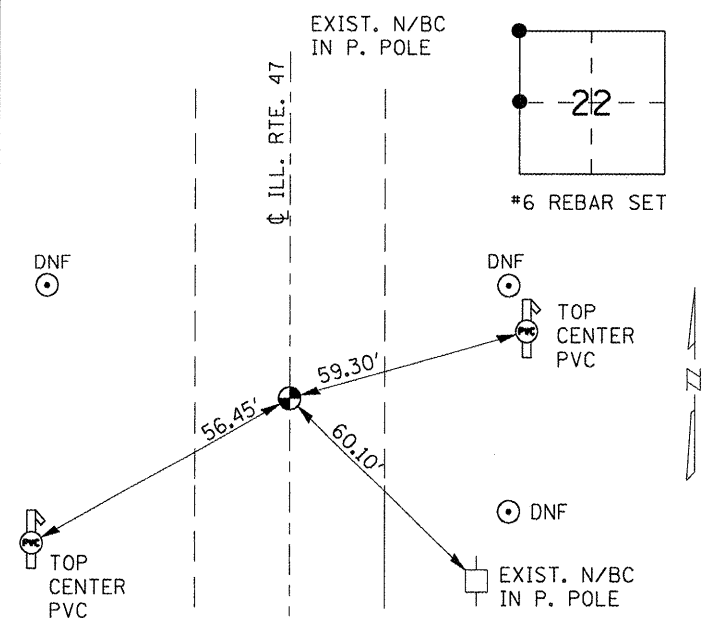
STA. 572+34.01



1/17/09
 FOUND BRASS DISK
 ON ϕ ILL. RTE 47
 JST, RM, WDM III

SEC. 34, N.W. COR. 29N. 7E.
THIRD PM LIVINGSTON CO.

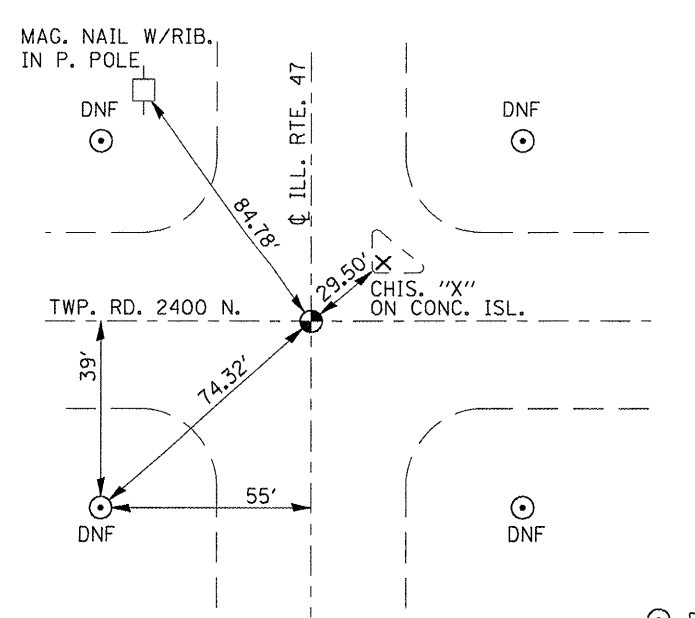
STA. 545+92.98



1/21/09
 FOUND BRASS DISK.
 ON ϕ ILL. RTE. 47
 JST, RM, WDM III

SEC. 22, W. QTR. COR. 29N. 7E.
THIRD PM LIVINGSTON CO.

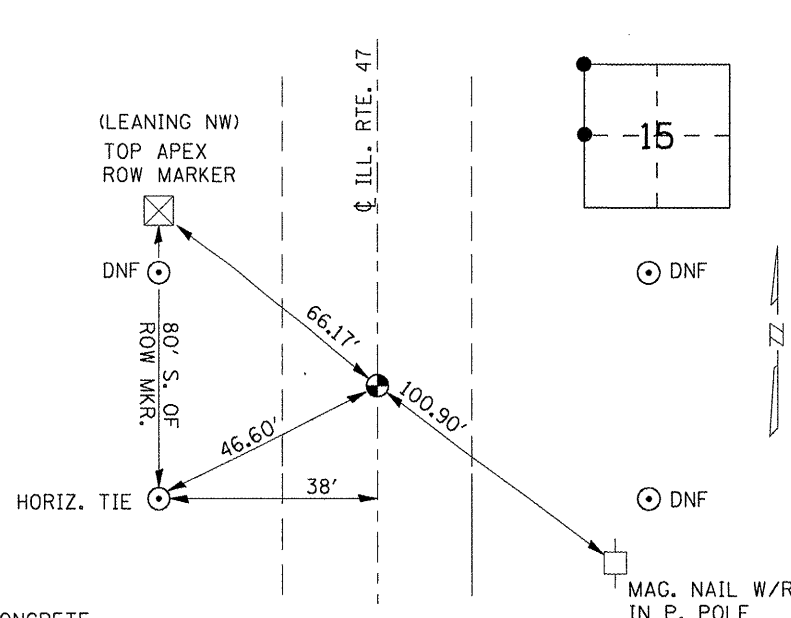
STA. 466+45.31



1/21/09
 FOUND BRASS DISK
 ON ϕ ILL. RTE 47
 JST, RM, WDM III

SEC. 22, N.W. COR. 29N. 7E.
THIRD PM LIVINGSTON CO.

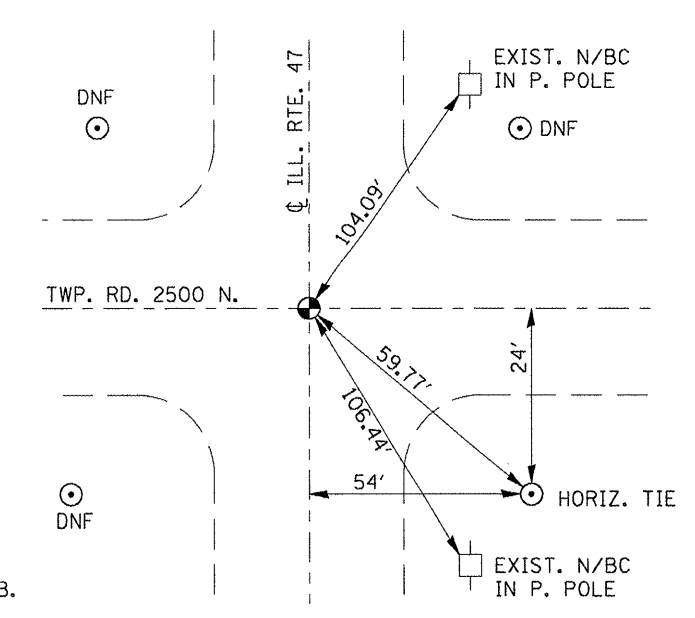
STA. 439+95.80



1/21/09
 FOUND BRASS DSK. $\pm 1.5'$ W.
 OF ϕ ILL. RTE 47
 JST, RM, WDM III

SEC. 15, W. QTR. COR. 29N. 7E.
THIRD PM LIVINGSTON CO.

STA. 413+50.36



1/21/09
 FOUND BRASS DISK
 ON ϕ ILL. RTE 47

SEC. 15, N.W. COR. 29N. 7E.
THIRD PM LIVINGSTON CO.

STA. 387+04.51

- \odot ROD IN CONCRETE
- \oplus IDOT BRASS PLUG
- + CROSS NOTCH
- DNF - (DID NOT FIND)
- \bullet REBAR

STATE OF ILLINOIS
 DEPARTMENT OF TRANSPORTATION

TIE POINTS

SCALE: TIE POINT SHEET NO. 2 OF 4 SHEETS STA. TIE POINTS TO STA. TIE POINTS

F.A.P. RTE.	SECTION	COUNTY	TOTAL SHEETS	SHEET NO.
326	(119,120,121,122,123)RS-3	GRU & LIV	36	14
CONTRACT NO. 66753				
ILLINOIS FED. AID PROJECT				

FILE NAME	USER NAME	DESIGNED	REVISED
ca:\pw\work\pilot\corcoran\m\0119033\066753-sht-details.dgn	corcoranlm	-	-
		DRAWN	REVISED
		CHECKED	REVISED
		DATE	REVISED

PLOT SCALE = 100.0000' / IN.
 PLOT DATE = Feb 10, 2009 - 09:31:19 AM