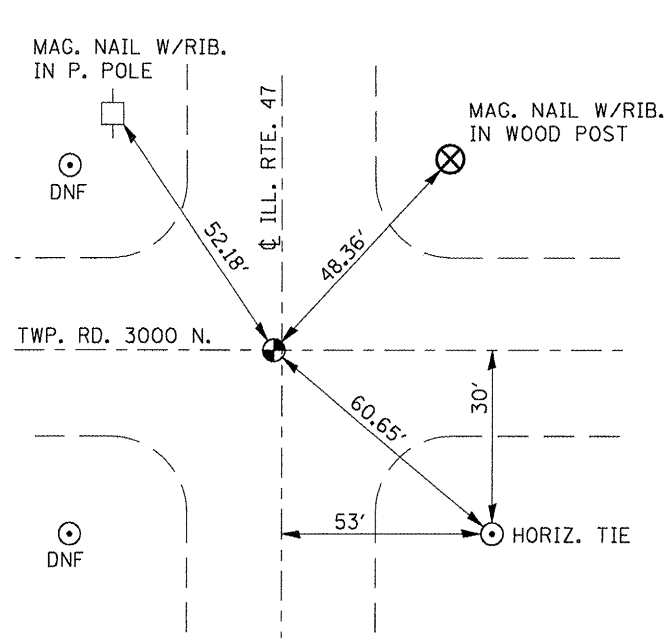


1/21/09
FOUND BRASS DISK
ON \O ILL. RTE. 47
JST, RM, WDM III

SEC. 22, W. QTR. COR. 30N. 7E.
THIRD PM LIVINGSTON CO.

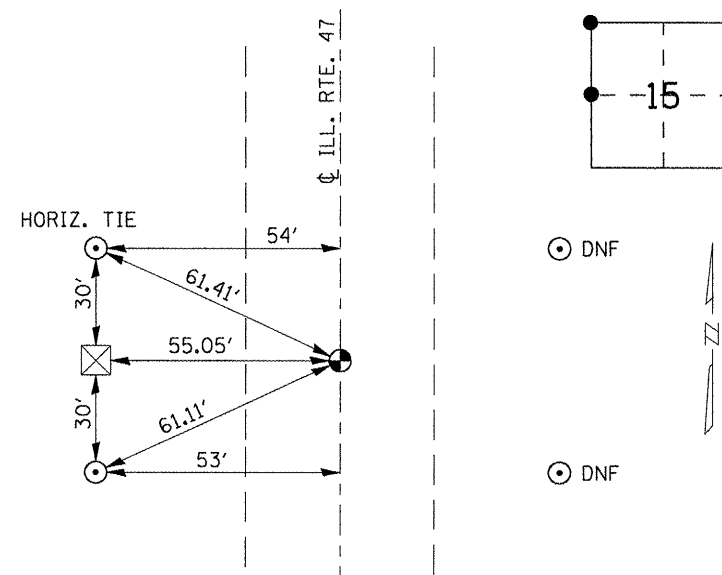
STA. 149+31.96



1/22/09
FOUND BRASS DISK
 $\pm 0.3'$ W. OF ILL. RTE 47
JST, RM, WDM III

SEC. 22, N.W. COR. 30N. 7E.
THIRD PM LIVINGSTON CO.

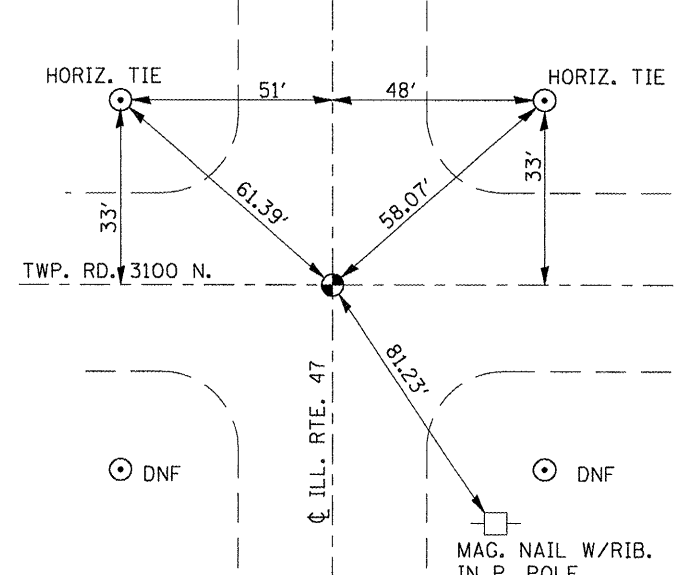
STA. 122+77.40



1/22/09
FOUND BRASS DISK.
ON \O ILL. RTE. 47
JST, RM, WDM III

SEC. 15, W. QTR. COR. 30N. 7E.
THIRD PM LIVINGSTON CO.

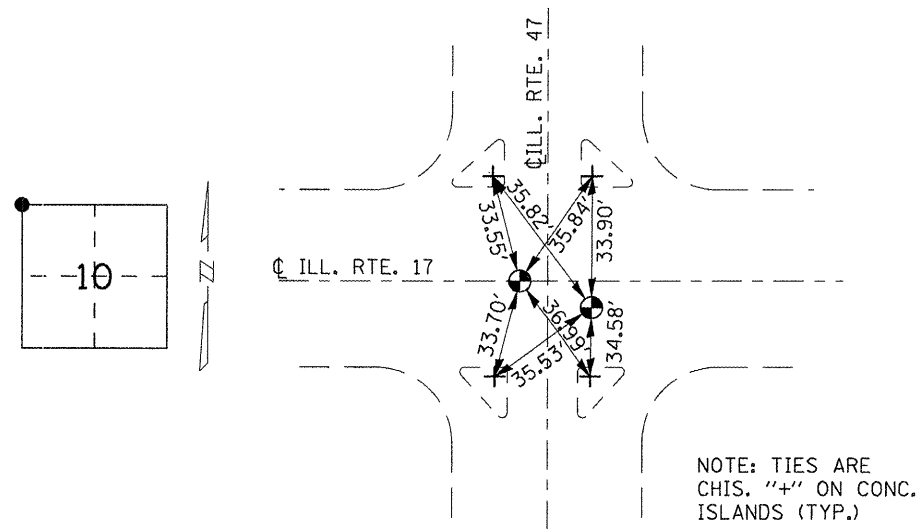
STA. 96+22.44



1/22/09
FOUND BRASS DISK
ON \O ILL. RTE. 47
JST, RM, WDM III

SEC. 15, N.W. COR. 30N. 7E.
THIRD PM LIVINGSTON CO.

STA. 69+67.48



1/22/09
FOUND 2 BRASS DISKS. SEC. COR.
IS LOCATED $\pm 1.0'$ E. OF \O ILL. RTE. 47
AND $\pm 1.0'$ S. OF ILL. RTE. 17.
2ND DISK COULD REPRESENT \O OF
ILL. RTE. 17. 2ND DISK IS ON \O ILL. 17
AND 2' WEST OF \O ILL. RTE. 47.
(REF. FROM SEC. COR. 1.0' N. AND
3.0' LT. 2.95' NORTHWESTERNLY)
JST, RM, WDM III

SEC. 10 N.W. COR. 30N. 7E.
THIRD PM LIVINGSTON CO.

- \O ROD IN CONCRETE
- \oplus IDOT BRASS PLUG
- + CROSS NOTCH
- DNF - (DID NOT FIND)
- REBAR

STATE OF ILLINOIS
DEPARTMENT OF TRANSPORTATION

TIE POINTS

SCALE: SHEET NO. 4 OF 4 SHEETS STA. TO STA.

F.A.P. RTE.	SECTION	COUNTY	TOTAL SHEETS	SHEET NO.
326	(119,120,121,122,123)RS-3	GRU & LIV	36	16
CONTRACT NO. 66753			ILLINOIS FED. AID PROJECT	

FILE NAME	USER NAME	DESIGNED	REVISED
cc:\pw_work\pwidot\corcoren\m\08119033\066753-sht-details.DGN	corcorenlm	-	-
		DRAWN	REVISED
		CHECKED	REVISED
		DATE	REVISED

PLOT SCALE = 100.0000' / IN.
PLOT DATE = Feb 10, 2009 - 09:31:40 AM