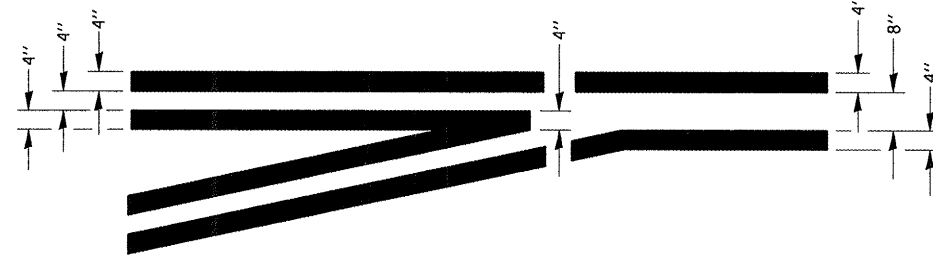
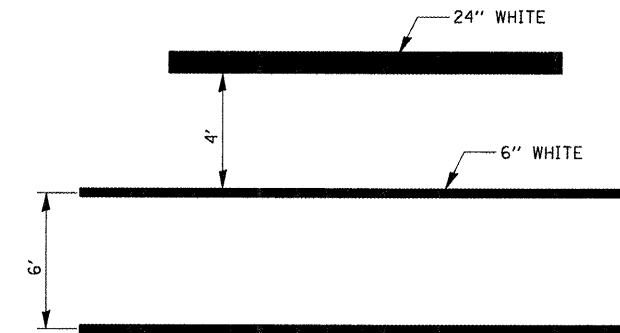


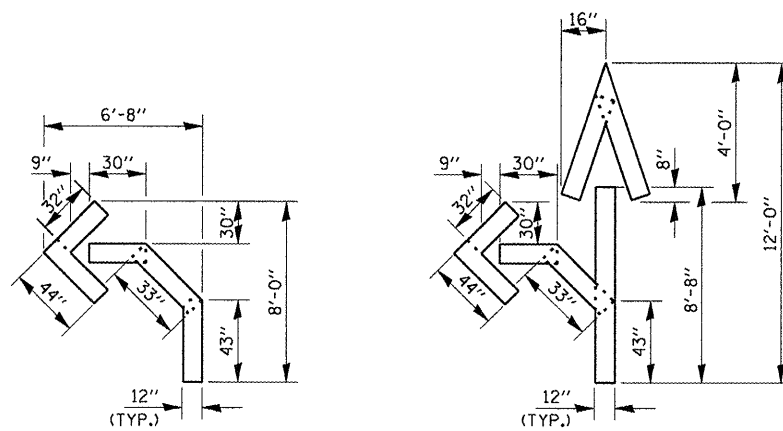
PAVEMENT MARKING



TYPICAL APPLICATION @ LEFT TURN LANES

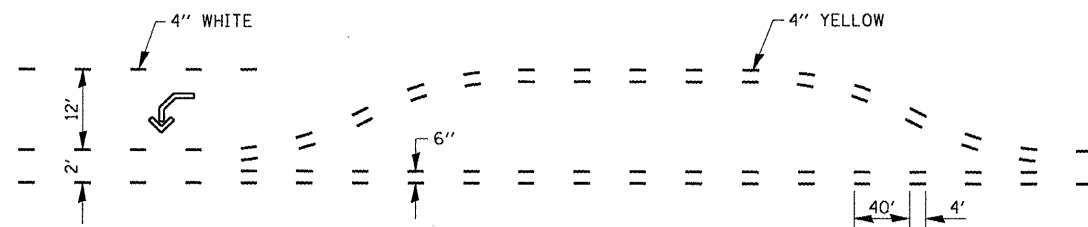


OPTION 1

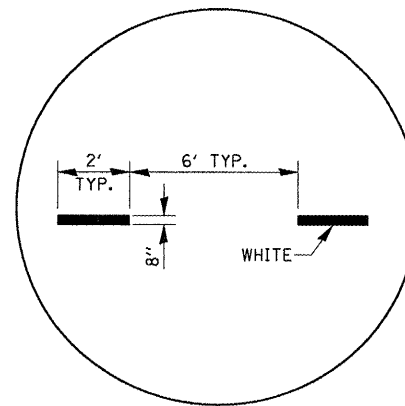


QUANTITY
12" LINE = 16 LIN. FT.
OR 4" LINE = 48 LIN. FT.

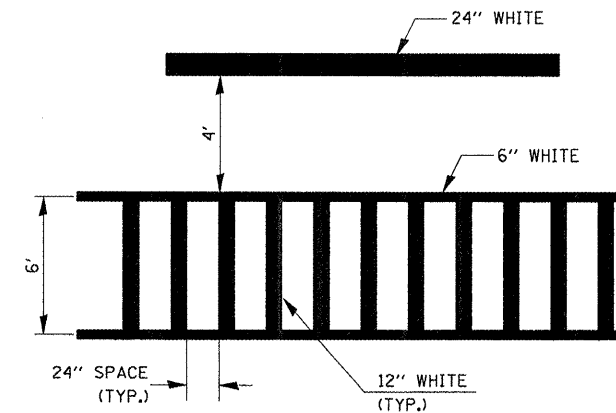
QUANTITY
12" LINE = 29 LIN. FT.
OR 4" LINE = 87 LIN. FT.



SHORT-TERM PAVEMENT MARKING FOR MEDIANS AND ARROWS



ADVANCE AND INTERSECTION LANE DIVIDER LINES



TYPICAL SPACING DETAIL FOR CROSSWALKS AND STOP BARS

OPTION 2

| | | | |
|--|--|------------|-----------|
| FILE NAME = | USER NAME = corcoranlm | DESIGNED - | REVISED - |
| ct:\pwork\pwork\corcoranlm\d0119833\d66753-shd-details.DGN | | DRAWN - | REVISED - |
| | PLOT SCALE = 100.0000 "/ IN. | CHECKED - | REVISED - |
| | PLOT DATE = Feb 18, 2009 - 10:50:02 AM | DATE - | REVISED - |

STATE OF ILLINOIS
DEPARTMENT OF TRANSPORTATION

| | | | |
|---------|-----------|-----------|--------------|
| DETAILS | | | |
| SCALE: | SHEET NO. | OF SHEETS | STA. TO STA. |

| | | | | |
|--------------------|---------------------------|-----------|---------------------------|-----------|
| F.A.P. RTE. | SECTION | COUNTY | TOTAL SHEETS | SHEET NO. |
| 326 | (119,120,121,122,123)RS-3 | GRU & LIV | 36 | 33 |
| CONTRACT NO. 66753 | | | ILLINOIS FED. AID PROJECT | |