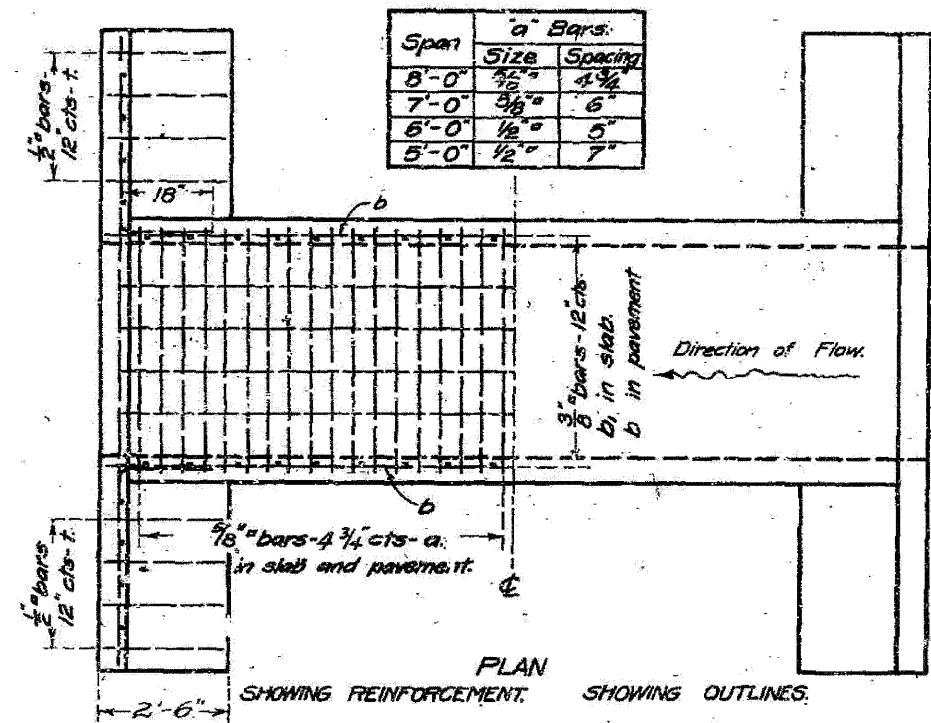
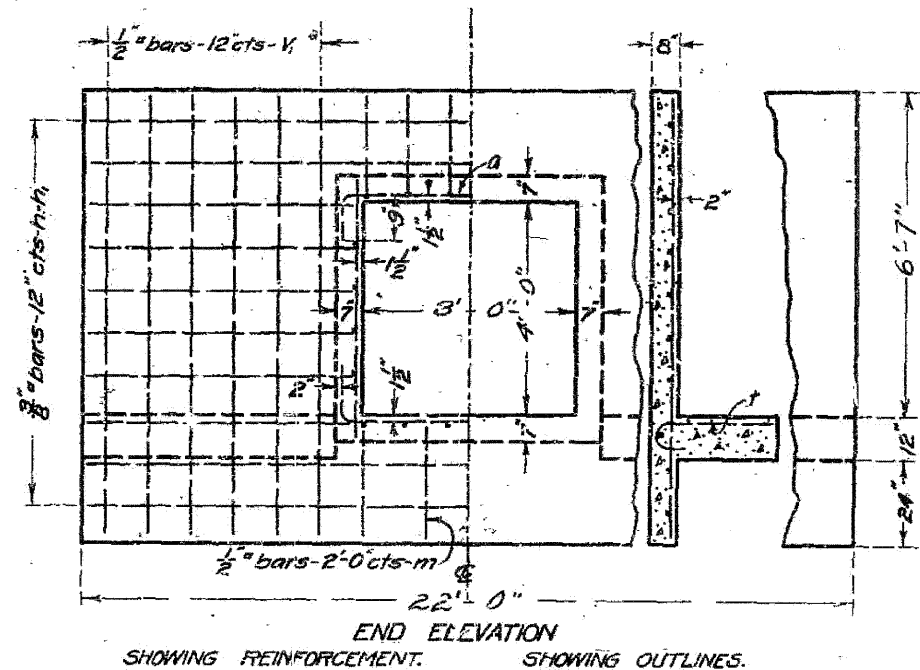
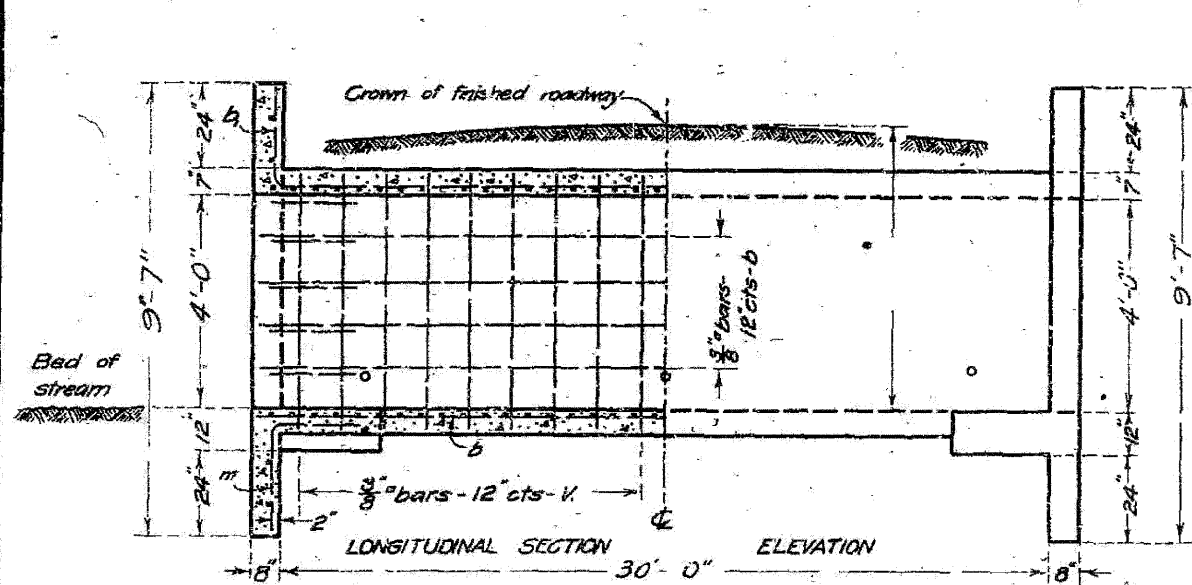


STATE OF ILLINOIS
STATE HIGHWAY DEPARTMENT
REINFORCED CONCRETE BOX CULVERT



Span	a Bars	
	Size	Spacing
8'-0"	3/8"	4 3/4"
7'-0"	3/8"	6"
6'-0"	1/2"	5"
5'-0"	1/2"	7"

Note: Use "m" bars in downstream headwall only.
Box is designed for no fill.
Maximum clearance = 7'-6"

BILL OF MATERIAL

Bars	No.	Size	Length
v	60	3/8"	5'-0"
v _i	24	1/2"	9'-0"
h	8	3/8"	2'-6"
h _i	20	3/8"	8'-6"
a	156	3/8"	10'-0"
b	32	3/8"	16'-6"
b _i	16	3/8"	18'-0"
t	24	1/2"	3'-0"
m	4	1/2"	5'-0"
Steel - Lbs.			3030
Concrete - Cu. Yds.			2.76

Class A concrete to be used throughout
Proportions 1 - 2 1/4 - 4

STANDARD	COMPUTED	W. A. J. D. H.
	CHECKED	H. L. B. J.
	DRAWN	H. L. B. J.
	CHECKED	W. A. J. D. H.
SPECIAL	ASSEMBLED	W. A. J. D. H.
	CHECKED	W. A. J. D. H.
EXAMINED		
BRIDGE ENGINEER		
APPROVED		
STATE HIGHWAY ENGINEER		

EXISTING PLANS FOR INFORMATION ONLY

STR. 027-2536