

F.A.P. RTE.	SECTION	COUNTY	TOTAL SHEETS	SHEET NO.
697	(13)RS-6	FORD	8	1
FED. ROAD DIST. NO.	ILLINOIS	CONTRACT NO. 66900		

STATE OF ILLINOIS
DEPARTMENT OF TRANSPORTATION
DIVISION OF HIGHWAYS

PROPOSED
HIGHWAY PLANS

FAP ROUTE 697 (IL 9)
SECTION (13)RS-6

FORD COUNTY

C-93-041-09

CAPE SEAL RESURFACING FROM PAXTON TO
THE VERMILION COUNTY LINE

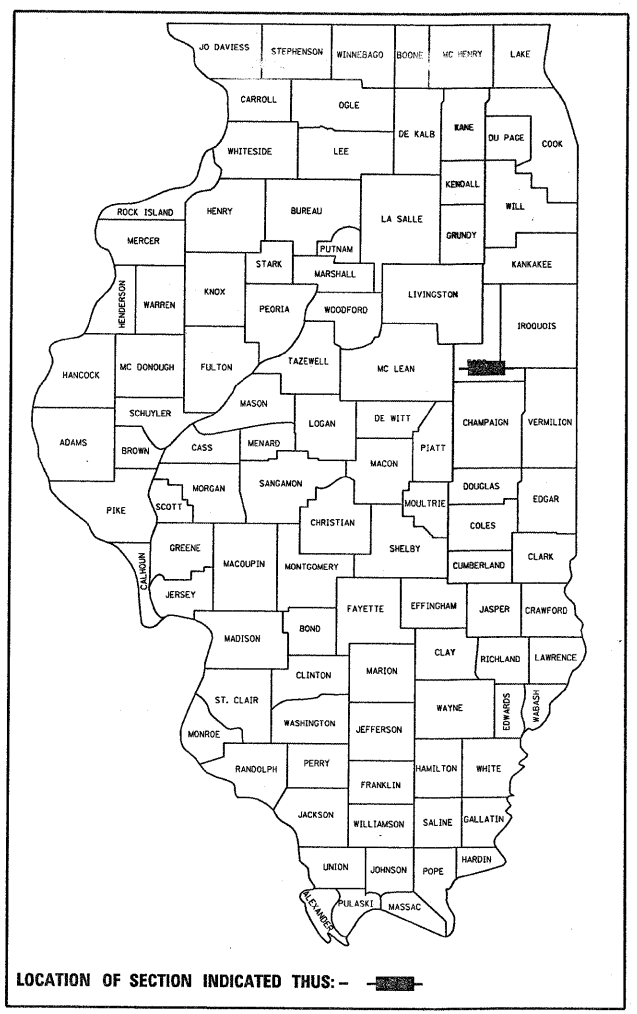
D-93-019-09

INDEX OF SHEETS

- 1 COVER SHEET
- 2 GENERAL NOTES
- 3 SUMMARY OF QUANTITIES
- 4 TYPICAL SECTIONS
- 5 SCHEDULES
- 6 TIE POINTS
- 7 PROJECT LAYOUT
- 8 MISC DETAILS

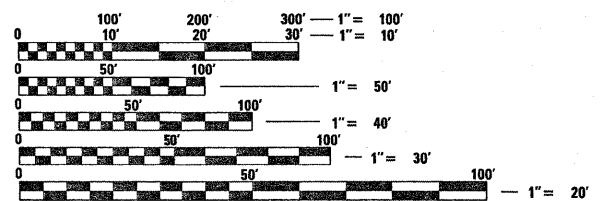
STANDARDS

- 000001-05 STANDARD SYMBOLS, ABBREVIATIONS AND PATTERNS
- 667101-01 PERMANENT SURVEY MARKERS
- 701301-03 LANE CLOSURE, 2L, 2W, SHORT TIME OPERATIONS
- 701306-02 LANE CLOSURE, 2L, 2W, SLOW MOVING OPERATIONS DAY ONLY, FOR SPEEDS GREATER THAN OR EQUAL TO 45 MPH
- 701311-03 LANE CLOSURE, 2L, 2W, MOVING OPERATIONS - DAY ONLY
- 701901-01 TRAFFIC CONTROL DEVICES
- 780001-02 TYPICAL PAVEMENT MARKINGS
- 781001-03 TYPICAL APPLICATIONS RAISED REFLECTIVE PAVEMENT MARKERS



LOCATION OF SECTION INDICATED THUS: - [shaded area] -

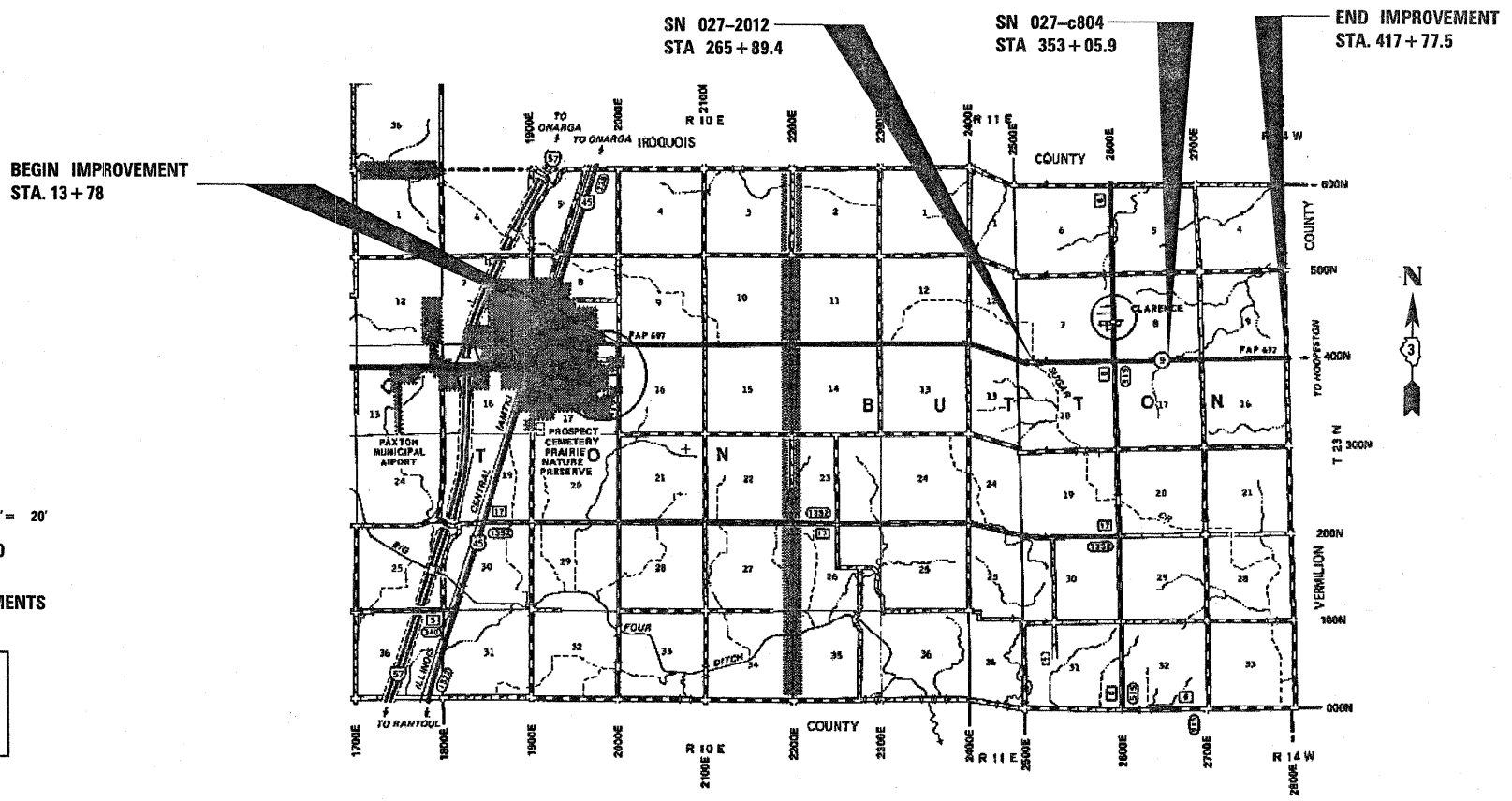
RURAL MINOR ARTERIAL
2009 ADT = 2100
P.V. = 82%
S.U. = 6%
M.U. = 12%



FULL SIZE PLANS HAVE BEEN PREPARED USING STANDARD ENGINEERING SCALES. REDUCED SIZED PLANS WILL NOT CONFORM TO STANDARD SCALES. IN MAKING MEASUREMENTS ON REDUCED PLANS, THE ABOVE SCALES MAY BE USED.

J.U.L.I.E.
 JOINT UTILITY LOCATION INFORMATION FOR EXCAVATION
 1-800-892-0123
 OR 811

DISTRICT 3 NO (815)434-6131
 PROJECT ENGINEER: JOE KANNEL
 UNIT CHIEF: MICHELE LINDEMANN
 TOWNSHIPS: PATTON, BUTTON
 CONTRACT NO. 66900



LOCATION MAP

NOT TO SCALE

GROSS LENGTH = NET LENGTH = 40399.5 FT. = 7.651 MILE

STATE OF ILLINOIS
 DEPARTMENT OF TRANSPORTATION
 DIVISION OF HIGHWAYS

SUBMITTED 11271 2009

John E. Brown
 DEPUTY DIRECTOR OF HIGHWAYS, REGION ENGINEER

March 27, 2009
Charles G. Ingersoll
 ENGINEER OF DESIGN AND ENVIRONMENT

March 27, 2009
Christine M. Reed
 DIRECTOR OF HIGHWAYS, CHIEF ENGINEER

PRINTED BY THE AUTHORITY
OF THE STATE OF ILLINOIS