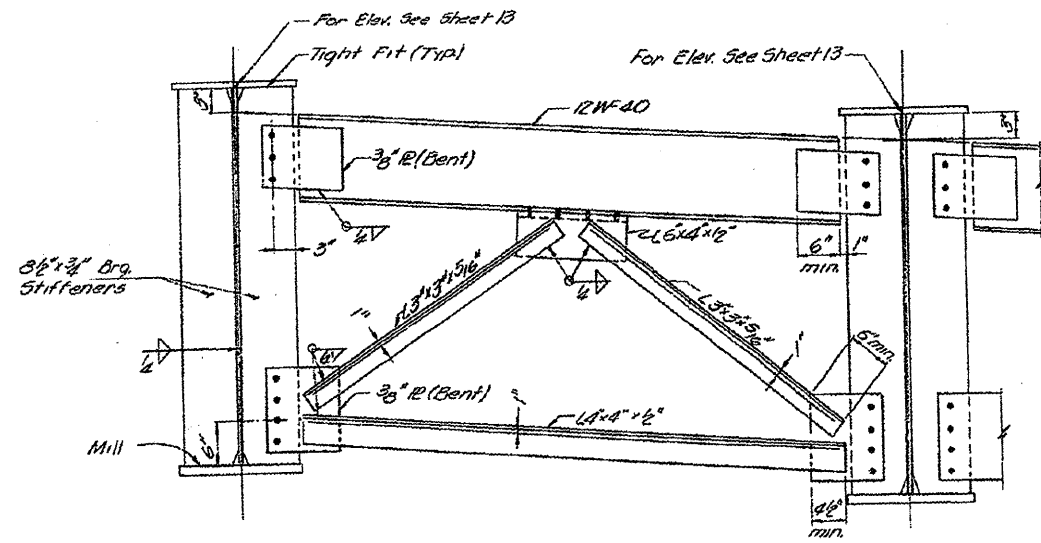
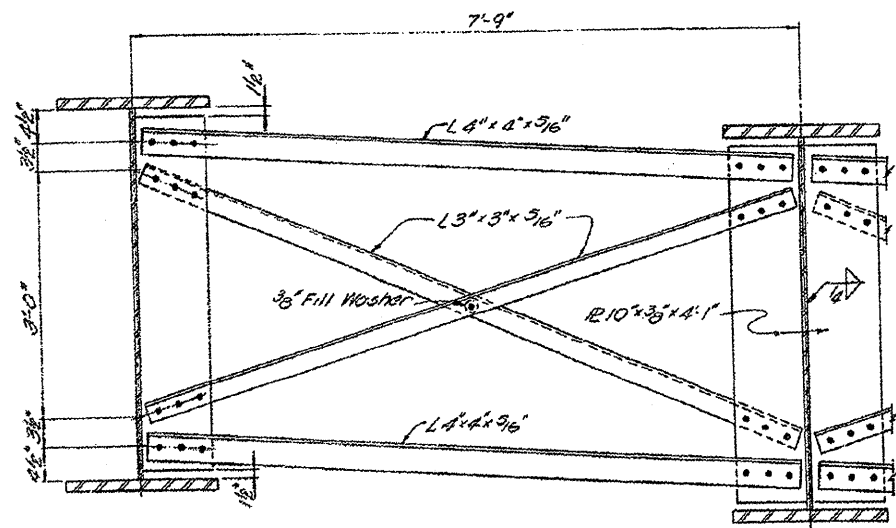


**INFORMATION ONLY**  
**ALL GIRDERS 52"/18" FLANGES**

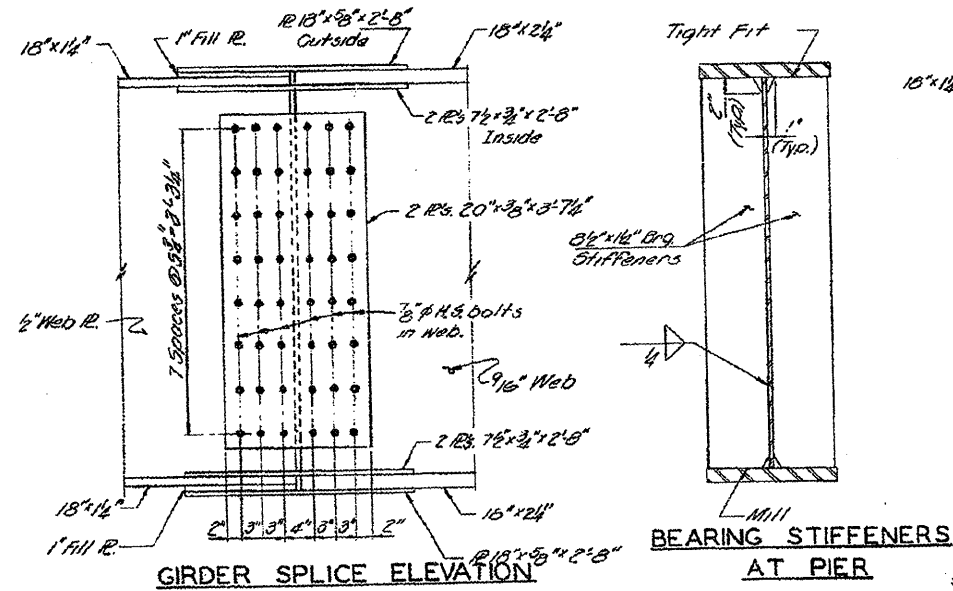
| ROUTE   | SECTION               | COUNTY   | TOTAL SHEETS | SHEET NO. |
|---------|-----------------------|----------|--------------|-----------|
| VARIOUS | D4 BRIDGE PAINTING 09 | TAZEWELL | 12           | 12        |



**TYPICAL END CROSS FRAME & BEARING STIFFENERS AT ABUTMENTS**

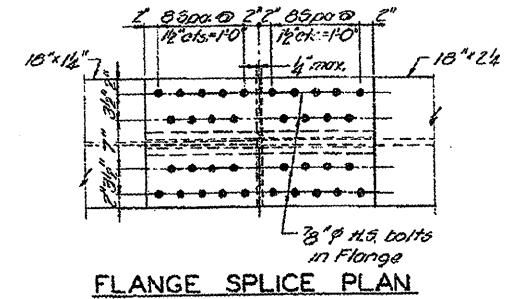


**TYPICAL INTERIOR CROSS FRAME**

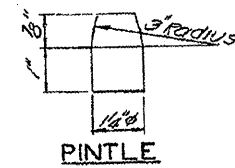


**GIRDER SPLICE ELEVATION**

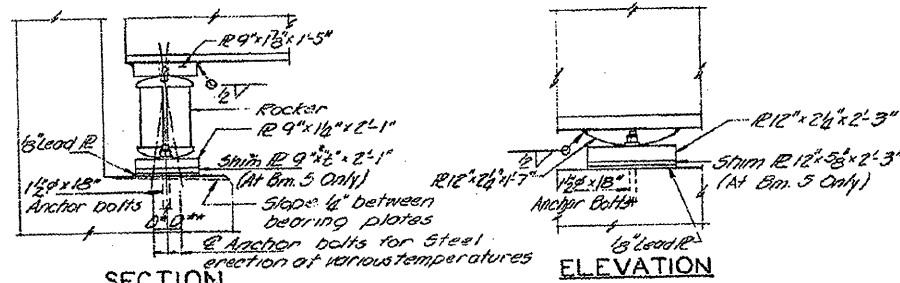
**BEARING STIFFENERS AT PIER**



**FLANGE SPLICE PLAN**



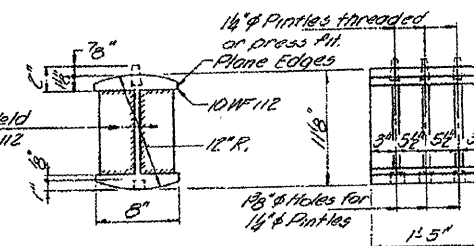
**PINTLE**



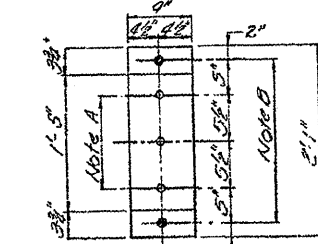
**SECTION**

**ELEVATION**

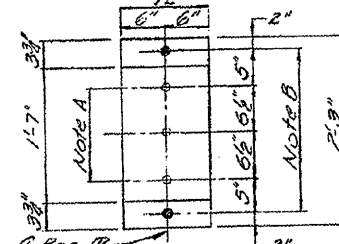
3/4 x 9/8 Plates Weld all sides to 10WF12 with 5/8" C.P.M.



**ROCKER**



**PLAN AT ABUTMENT**



**PLAN AT PIER**

**BEARING DETAILS**

\*1/2" - DIMENSION  
 \*1/16" MAJOR, 1/2" L. ABUT.

**NOTE A**  
 1/2" Holes - 1" Deep in top 12" for pintles Thread or press 1/4" pintles into bottom 12"

**NOTE B**  
 1/2" Holes for 1/4" Anchor bolts. 2 1/2" x 2 1/2" 5/8" R. Washers under rut.

**GIRDER & BEARING DETAILS**

090-0095

**CROSS FRAME & BEARING DETAILS**