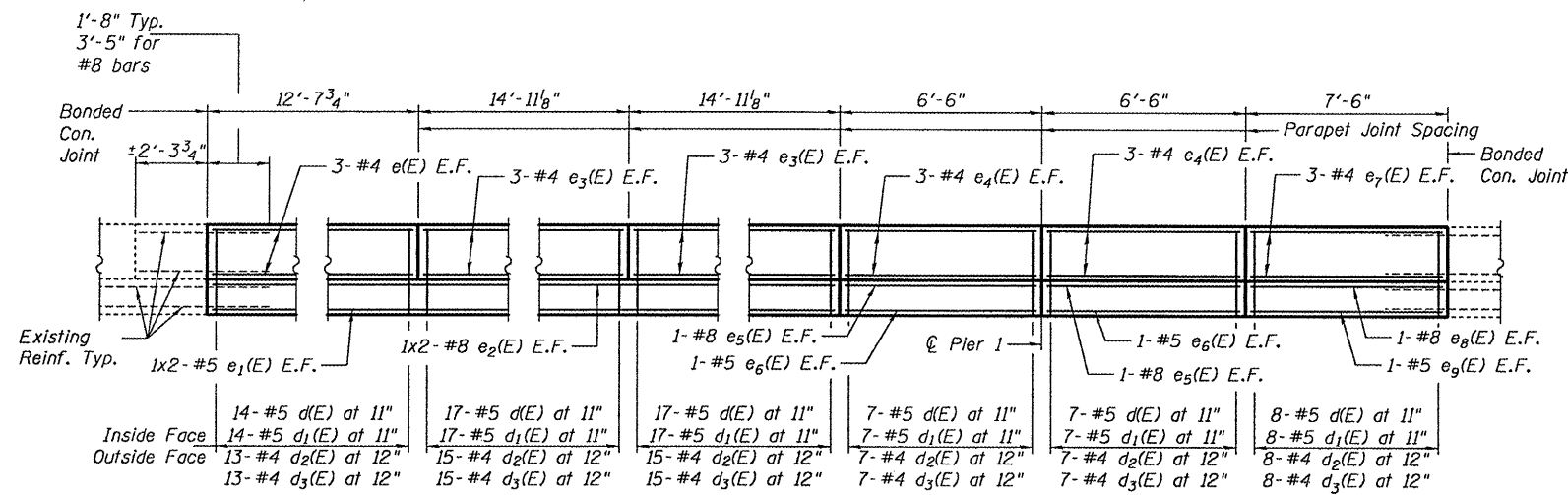
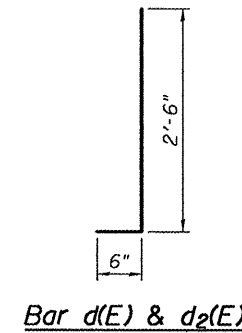
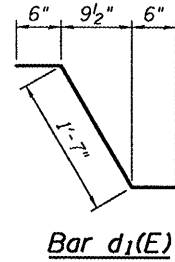
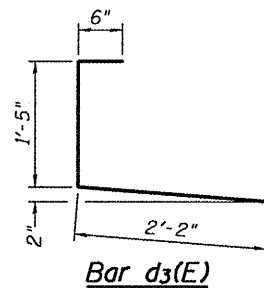
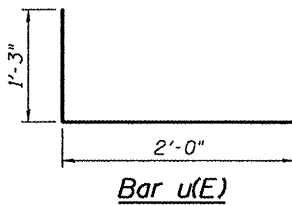


STATE OF ILLINOIS  
DEPARTMENT OF TRANSPORTATION

ROUTE NO.	SECTION	COUNTY	TOWNSHIP	SHEET	SHEET NO. 4 7 SHEETS
F.A.P. 673	++	Tazewell	17	14	
FED. ROAD DIST. NO. 7		ILLINOIS		FED. AID PROJECT-	
Contract Number: 68B57 ++ (102-HB-2)I-2					



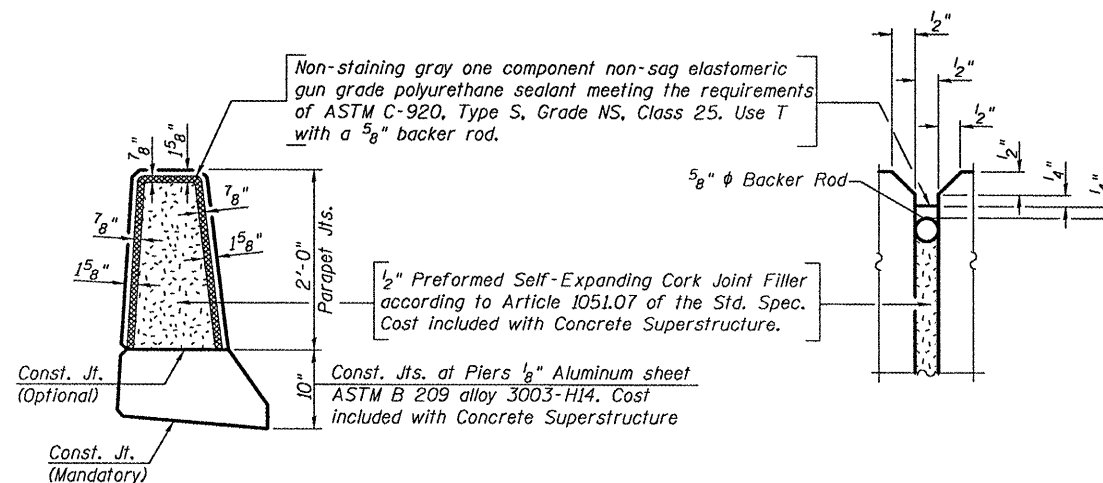
SECTION C-C  
INSIDE SOUTH PARAPET ELEVATION



BILL OF MATERIAL

Bar	No.	Size	Length	Shape
d(E)	56	#5	4'-6"	—
a1(E)	109	#5	16'-6"	—
a2(E)	48	#6	5'-8"	—
b(E)	18	#5	22'-1"	—
b1(E)	6	#6	28'-4"	—
b2(E)	24	#5	21'-8"	—
b3(E)	12	#6	7'-1"	—
b4(E)	18	#6	6'-10"	—
b5(E)	24	#5	17'-5"	—
b6(E)	36	#5	15'-0"	—
d(E)	70	#5	3'-0"	—
d1(E)	70	#5	2'-7"	—
d2(E)	65	#4	3'-0"	—
d3(E)	65	#4	4'-1"	—
e(E)	6	#4	12'-4"	—
e1(E)	4	#5	21'-10"	—
e2(E)	4	#8	22'-9"	—
e3(E)	12	#4	14'-8"	—
e4(E)	12	#4	6'-3"	—
e5(E)	4	#8	6'-3"	—
e6(E)	4	#5	6'-3"	—
e7(E)	6	#4	7'-3"	—
e8(E)	2	#8	7'-3"	—
e9(E)	2	#5	7'-3"	—
u(E)	2	#5	4'-6"	—
Concrete Removal		Cu. Yd.	27.5	
Concrete Superstructure		Cu. Yd.	27.6	
Reinforcement Bars, Epoxy Coated		Lbs.	6,520	

Bars indicated thus 1 x 2-#5 etc. indicates 1 line of bars with 2 lengths per line.



PARAPET JOINT DETAILS

DESIGNED	A.J.B.
CHECKED	S.J.B.
DRAWN	Drew Christopher
CHECKED	A.J.B. S.J.B.

March 19, 2009  
EXAMINED *Carl Krueger*  
ENGINEER OF STRUCTURAL SERVICES  
PASSED *Ralph E. Anderson*  
ENGINEER OF BRIDGES AND STRUCTURES

PARAPET DETAILS  
F.A. RT. 317  
TAZEWELL COUNTY  
SN 090-0069