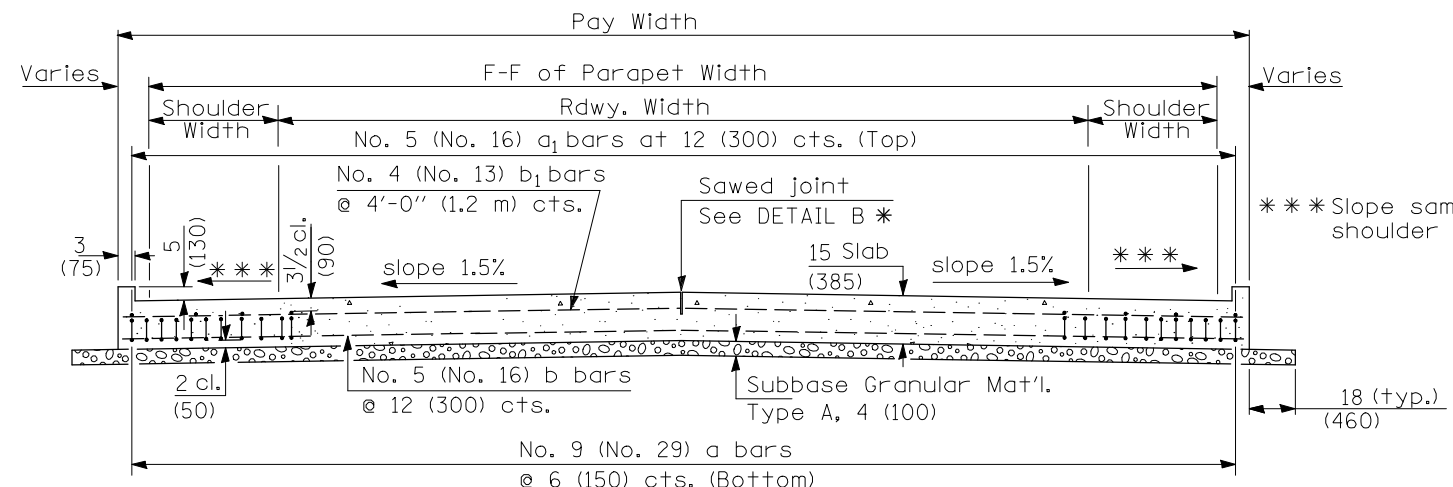


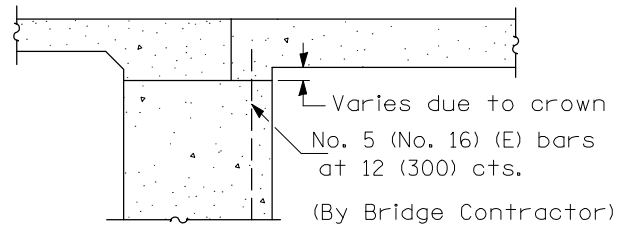
SECTION C-C

① Stagger No. 9 (No. 29) a bars as shown on plan - full width



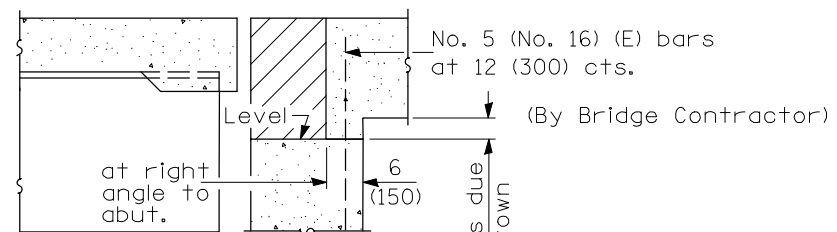
SECTION D-D

(See Plan for Dimensions not shown)



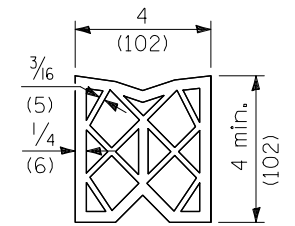
SECTION E-E

(Integral Abutments)

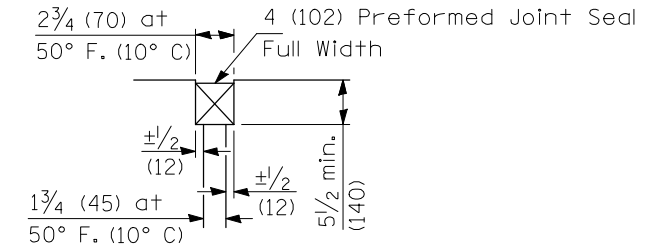


SECTION E-E

(Jointed Abutments)



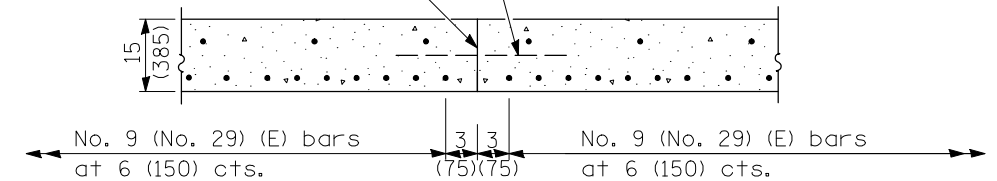
PREFORMED JOINT SEAL



DETAIL A

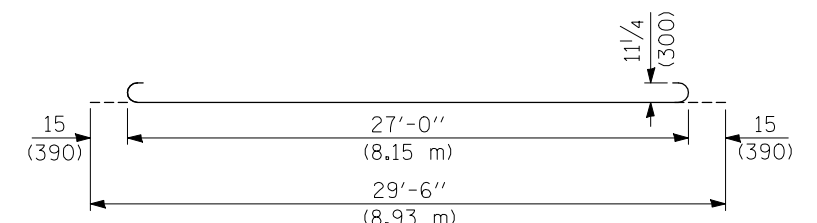
Longitudinal Construction Joint in accordance with details shown on Standard 420001.

No. 6 (No. 19) Tie bars at 30 (760) cts.

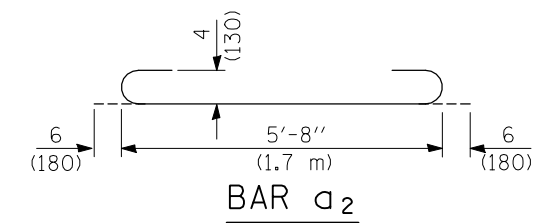


OPTIONAL LONGITUDINAL CONSTRUCTION JOINT

As approved by the Engineer, the Contractor may elect to reduce the widths of pour by use of the Optional Longitudinal Construction Joint shown. Joints shall be located at the edge of a traffic lane.



BAR a



BAR a₂

DESIGN STRESSES
 f_y = 60,000 p.s.i. (400 MPa)
 f'c = 3,500 p.s.i. (24 MPa)
 n = 8.5

BRIDGE APPROACH PAVEMENT DETAIL		F.A.I. RTE.	SECTION	COUNTY	TOTAL SHEETS	SHEET NO.
SCALE:		74	(57-21B)BR	MCLEAN	61	42
SHEET NO. 3 OF 4 SHEETS		STA. TO STA.		CONTRACT NO. 70641		
ILLINOIS FED. AID PROJECT						