

CONSULTANT PROJECT MANAGER: RICK ANDERSON (309) 693-7615

PROJECT ENGINEER: TOM RONAN (217) 342-8320  
SQUAD LEADER: JENNIFER WENTHE (217) 342-8361

F.A.P. RTE.	SECTION	COUNTY	TOTAL SHEETS	SHEET NO.
770	(115BR)B-1	SHELBY	39	1
FED. ROAD DIST. NO.	ILLINOIS	CONTRACT NO. 74233		

\*39+4=43

FOR INDEX OF SHEETS, SEE SHEET NO. 2

STATE OF ILLINOIS  
DEPARTMENT OF TRANSPORTATION  
DIVISION OF HIGHWAYS  
**PROPOSED  
HIGHWAY PLANS**

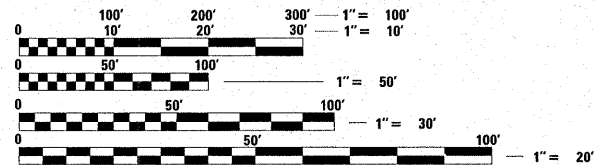
FAP ROUTE 770 (IL ROUTE 128)  
SECTION (115BR)B-1  
PROJECT: F0770(014)  
SHELBY COUNTY

C-97-035-07

**LIST OF STANDARDS**

- 000001-05 STANDARD SYMBOLS, ABBREVIATIONS AND PATTERNS
- 001001-02 AREAS OF REINFORCEMENT BARS
- 001006 DECIMAL OF AN INCH AND OF A FOOT
- 280001-04 TEMPORARY EROSION CONTROL SYSTEMS
- 406201-01 MAILBOX TURNOUT
- ~~420401-01 BRIDGE APPROACH PAVEMENT~~
- 482011-03 HMA SHOULDER STRIPS/SHOULDERS WITH RESURFACING OR WIDENING & RESURFACING PROJECTS
- 515001-03 NAME PLATE FOR BRIDGE
- 630001-08 STEEL PLATE BEAM GUARDRAIL
- 630201-06 PCC/HMA STABILIZATION AT STEEL PLATE BEAM GUARDRAIL
- 630301-05 SHOULDER WIDENING FOR TYPE 1 (SPECIAL) GUARDRAIL TERMINALS
- 631031-07 TRAFFIC BARRIER TERMINAL, TYPE 6
- 635006-03 REFLECTOR AND TERMINAL MARKER PLACEMENT
- 635011-02 REFLECTOR MARKER AND MOUNTING DETAILS
- ~~701201-02 LANE CLOSURE, 2L, 2W, DAY ONLY~~
- ~~701306-02 FOR SPEEDS > 45MPH~~
- 701321-10 LANE CLOSURE, 2L, 2W, BRIDGE REPAIR WITH BARRIER
- 701326-03 LANE CLOSURE, 2L, 2W, PAVEMENT WIDENING, FOR SPEEDS > 45 MPH
- 701901-01 TRAFFIC CONTROL DEVICES
- 704001-05 TEMPORARY CONCRETE BARRIER
- 780001-02 TYPICAL PAVEMENT MARKINGS
- 781001-03 TYPICAL APPLICATIONS RAISED REFLECTIVE PAVEMENT MARKERS

2007 ADT = 3100



FULL SIZE PLANS HAVE BEEN PREPARED USING STANDARD ENGINEERING SCALES. REDUCED SIZED PLANS WILL NOT CONFORM TO STANDARD SCALES. IN MAKING MEASUREMENTS ON REDUCED PLANS, THE ABOVE SCALES MAY BE USED.

J.U.L.I.E.  
JOINT UTILITY LOCATION INFORMATION FOR EXCAVATION  
1-800-892-0123  
OR 811

PREPARED BY:

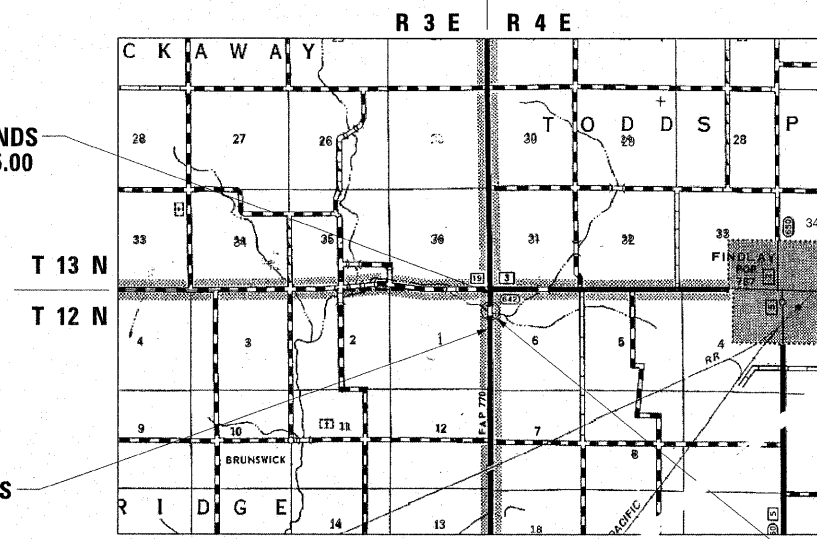


7615 NORTH HARKER DRIVE  
PEORIA, ILLINOIS 61615  
TEL 309-693-7615  
FAX 309-693-7616

GROSS LENGTH = 750 FT. = 0.14 MILES  
NET LENGTH = 750 FT. = 0.14 MILES

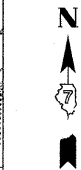
CONTRACT NO. 74233

IMPROVEMENT ENDS  
STATION 412 + 65.00



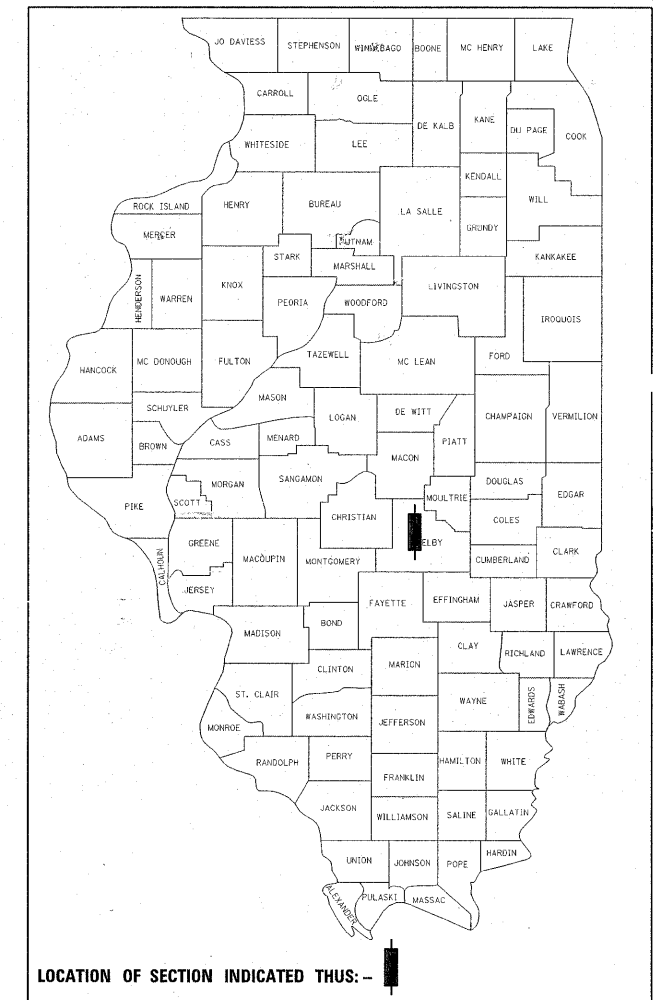
IMPROVEMENT BEGINS  
STATION 405 + 15.00

LOCATION MAP



PROPOSED IMPROVEMENT SECTION (115BR)B-1 REMOVE AND REPLACE BRIDGE CARRYING IL 128 OVER ROBISON CREEK EX. S.N. 087-0017 PR. S.N. 087-0031 STA. 408 + 75.45

D-97-021-07



LOCATION OF SECTION INDICATED THUS: -

STATE OF ILLINOIS  
DEPARTMENT OF TRANSPORTATION  
DIVISION OF HIGHWAYS

SUBMITTED October 22, 2008

Roger L. Swadlow  
DEPUTY DIRECTOR OF HIGHWAYS, REGION ENGINEER

January 30, 2009  
Charles J. Driscoll  
ENGINEER OF DESIGN AND ENVIRONMENT

January 30, 2009  
Christine M. Reed  
DIRECTOR OF HIGHWAYS, CHIEF ENGINEER

PRINTED BY THE AUTHORITY  
OF THE STATE OF ILLINOIS

Rev.