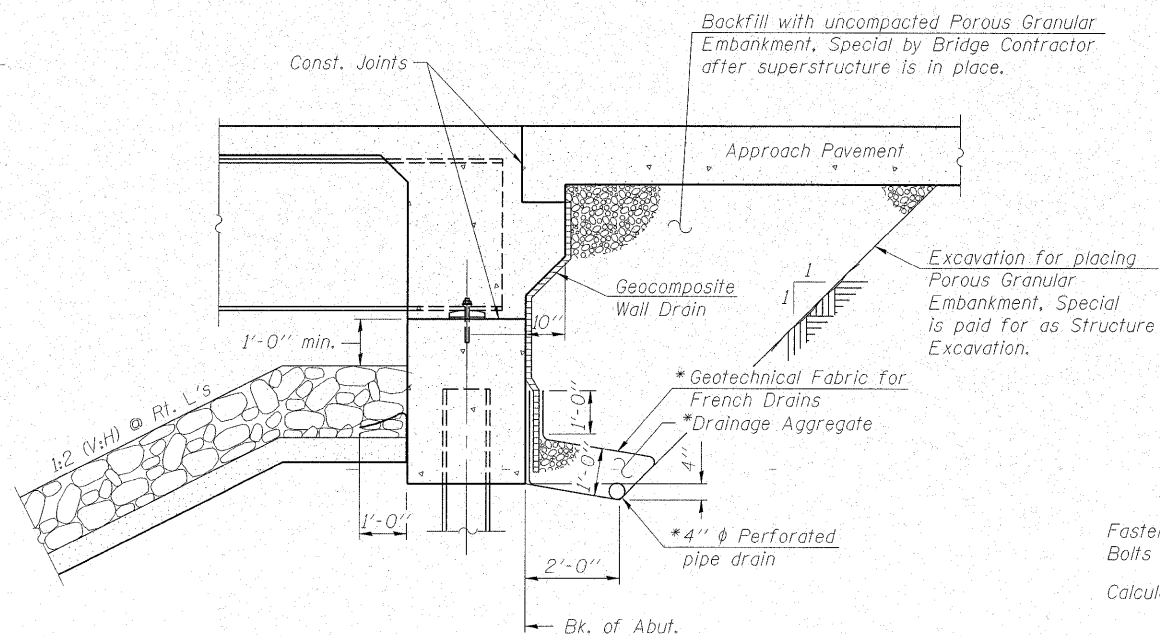


STATE OF ILLINOIS  
DEPARTMENT OF TRANSPORTATION

ROUTE NO.	SECTION	COUNTY	ISTH SHEETS	SHEET	SHEET NO. 2 19 SHEETS
FAP 770 IL 128	(115BR) B-1	SHELBY	39	19	
FED. ROAD DIST. NO.	ILLINOIS	FED. AID PROJECT			

Contract # 74233



**SECTION THRU INTEGRAL ABUTMENT**  
(Horiz. dim. @ Rt. L's)

\* Included in the cost of Pipe Underdrains for Structures, 4".

**Note:**

All drainage system components shall extend to 2'-0" from the end of each wingwall except an outlet pipe shall extend until intersecting with the side slopes. The pipes shall drain into concrete headwalls. (See Article 601.05 of the Standard Specifications and Highway Standard 601101).

**Note:**

A quantity for Pipe Drains 4" has been provided to extend the pipe underdrains for structures, 4" from the edge of wingwalls to the toe of the proposed slope.

**TOTAL BILL OF MATERIAL**

ITEM	UNIT	SUPER	SUB	TOTAL
Porous Granular Embankment, Special	Cu. Yd.		89	89
Stone Riprap, Class A4	Sq. Yd.		746	746
Filter Fabric	Sq. Yd.		746	746
Removal of Existing Structures	Each		1	1
Structure Excavation	Cu. Yd.		143	143
Concrete Structures	Cu. Yd.		35.5	35.5
Concrete Superstructure	Cu. Yd.	117.3		117.3
Bridge Deck Grooving	Sq. Yd.	516		516
Protective Coat	Sq. Yd.	370		370
Furnishing & Erecting Structural Steel	L. Sum	1		1
Stud Shear Connectors	Each	1800		1800
Reinforcement Bars, Epoxy Coated	Pound	22600	4940	27540
Bar Splicers	Each	299	20	319
Furnishing Metal Shell Piles, 12"x0.25"	Foot		833	833
Driving Piles	Foot		833	833
Test Pile Metal Shells	Each		2	2
Temporary Sheet Piling	Sq. Ft.		1015	1015
Name Plates	Each	1		1
Anchor Bolts, 1"	Each		32	32
Geocomposite Wall Drain	Sq. Yd.		69	69
Pipe Underdrains for Structures, 4"	Foot		153	153
Asbestos Bearing Pad Removal	Each		22	22

**GENERAL NOTES**

Fasteners shall be AASHTO M164 Type 1, mechanically galvanized bolts. Bolts  $\frac{3}{4}$  in.  $\phi$ , holes  $\frac{15}{16}$  in.  $\phi$ , unless otherwise noted.

Calculated weight of Structural Steel = 88,550 lbs. (M 270, Gr. 50)  
4,700 lbs. (M 270, Gr. 36)

No field welding is permitted except as specified in the contract documents.

Reinforcement bars shall conform to the requirements of ASTM A 706 Gr 60 (IL Modified). See Special Provisions.

Reinforcement bars designated (E) shall be epoxy coated.

The Inorganic Zinc Rich Primer / Acrylic / Acrylic Paint System shall be used for shop and field painting of new structural steel except where otherwise noted. The color of the final finish coat for all interior steel surfaces shall be gray, Munsell No. 5B 7/1. The color of the final finish coat for the exterior and bottom flange of the fascia beams shall be gray, Munsell No. 5B 7/1. See Special Provision for "Cleaning and Painting New Metal Structures".

Layout of slope protection system may be varied in the field to suit ground conditions as directed by the Engineer.

The Contractor shall drive test piles to 110% of the nominal required bearing specified in production locations at substructures specified or approved by the Engineer before ordering the remainder of piles.

All cross frames or diaphragms shall be installed as steel is erected and secured with erection pins and bolts except as otherwise noted. Individual cross frames or diaphragms at supports may be temporarily disconnected to install bearing anchor rods.

The Contractor is advised that the existing PPC deck beams are in a deteriorated condition with reduced load carrying capacity. It is the Contractor's responsibility to account for the condition of the beams when developing construction procedures for removal and replacement of the structure.

If the Contractor's procedures for existing beam removal involves placement of heavy equipment on the existing deck beams, a detailed procedure shall be submitted to the Engineer for approval. The procedure shall include calculations, sealed by an Illinois Licensed Structural Engineer, verifying the structural adequacy of the beams for the proposed loads. Cost included with Removal of Existing Structures.

Slipforming of the parapets is not allowed.



DESIGNED - BAS
CHECKED - KEF
DRAWN - SGM
CHECKED - RJA / KEF

**GENERAL NOTES,**  
**TOTAL BILL OF MATERIAL**  
**IL ROUTE 128 OVER**  
**ROBINSON CREEK TRIBUTARY**  
**F.A.P. RTE. 770 - SECTION (115BR)B-1**  
**SHELBY COUNTY**  
**STATION 408+75.45**  
**STRUCTURE NO. 087-0031**