

STATE OF ILLINOIS
DEPARTMENT OF TRANSPORTATION

ROUTE NO.	SECTION	COUNTY	STATION	SHEET NO.	SHEET NO. 3
FAP 770 IL 128	(115BR) B-1	SHELBY	39	20	19 SHEETS
FED. ROAD DIST. NO.	ILLINOIS	FED. AID PROJECT			

Contract # 74233

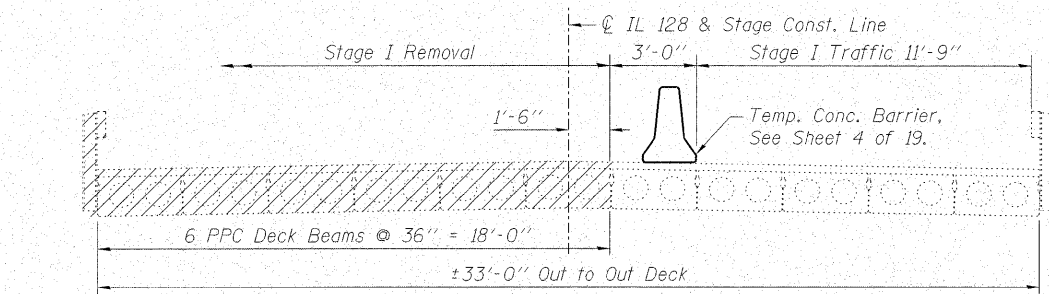
If the Contractor chooses to alter the temporary cantilevered sheet piling design requirements shown on the plans, a design submittal including plan details and calculations will be required for review and acceptance by the Engineer.

The Contractor shall connect the first sheet to the existing abutment wall to ensure stability of sheets driven to the top of the existing footing. This connection shall be reviewed and accepted by the Engineer and included in the cost for Temporary Sheet Piling.

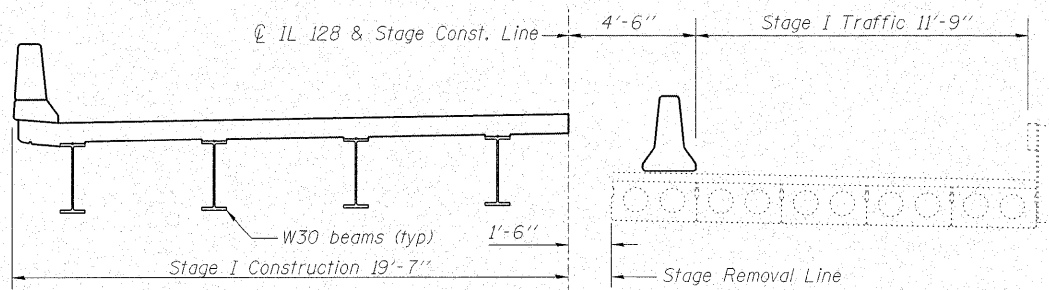
The minimum section modulus for cantilever sheet piling shall be 12 in.³/ft.

BILL OF MATERIAL

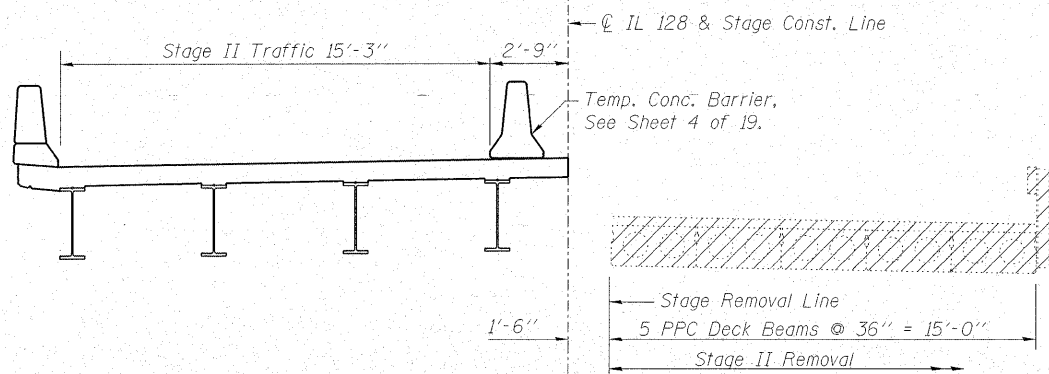
Item	Unit	Quantity
Temporary Sheet Piling	Sq. Ft.	1015



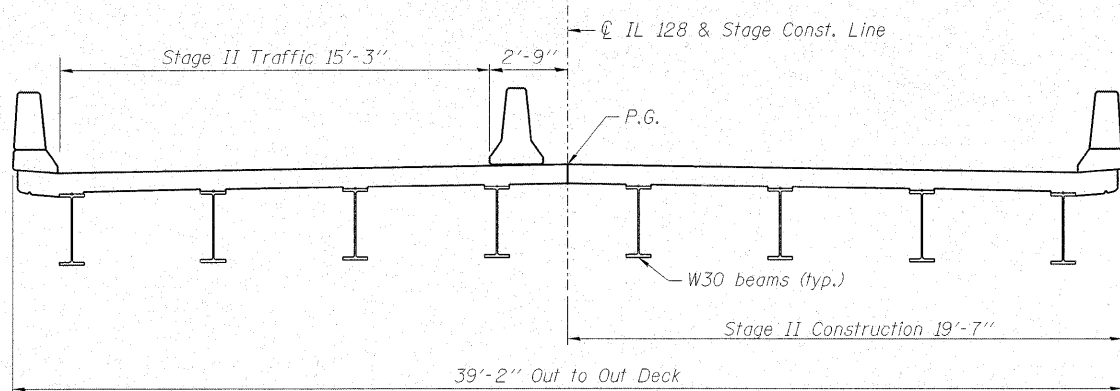
STAGE I REMOVAL
(Looking North)



STAGE I CONSTRUCTION
(Looking North)



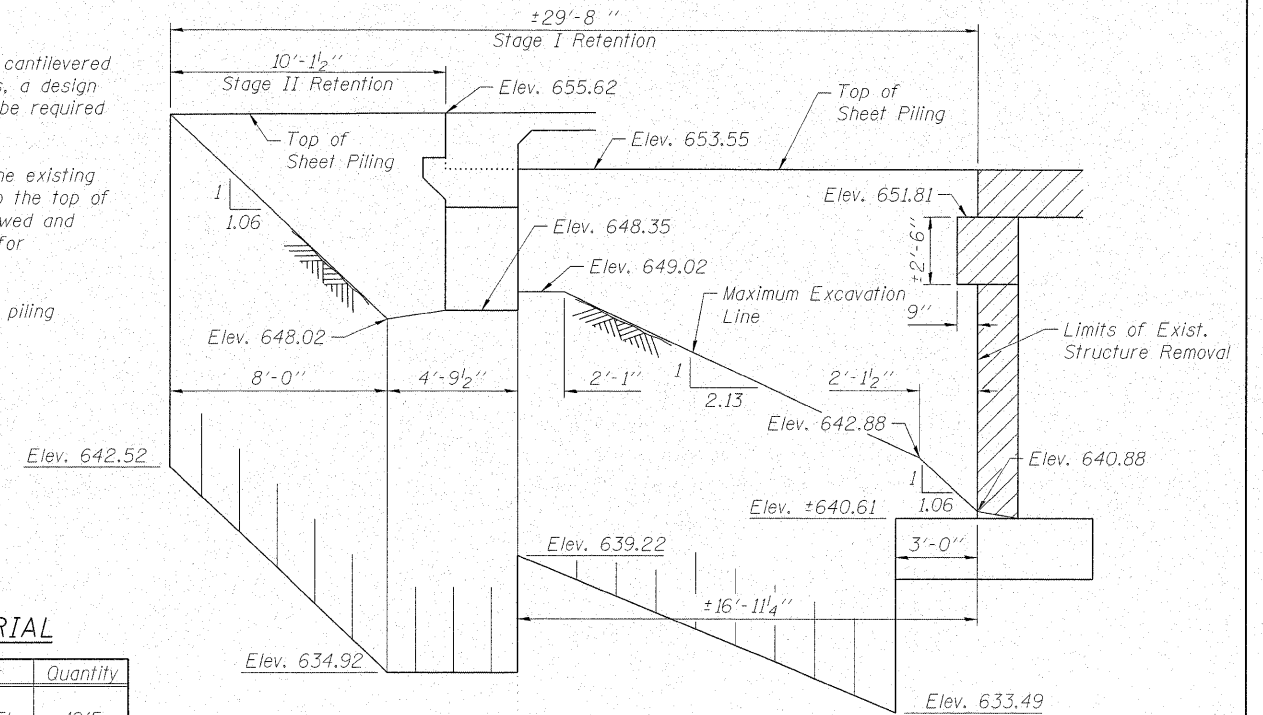
STAGE II REMOVAL
(Looking North)



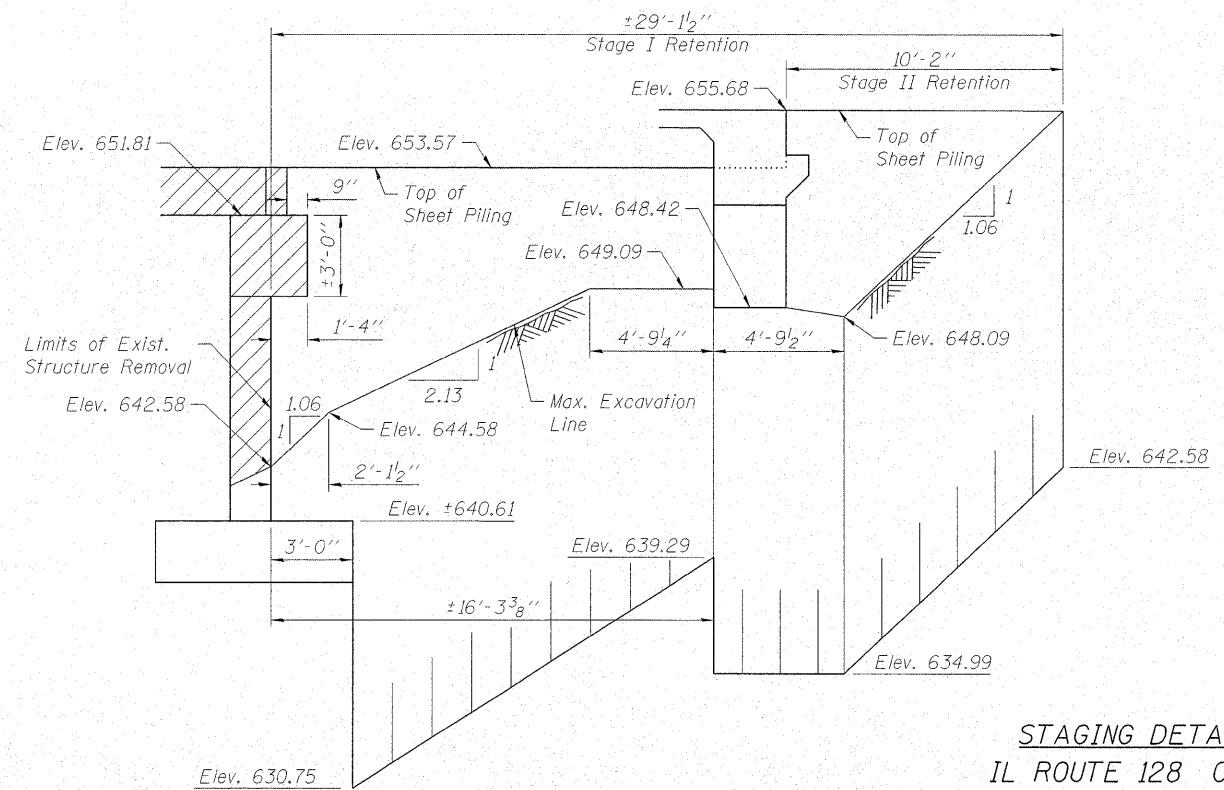
STAGE II CONSTRUCTION
(Looking North)

STAGING NOTES:

- Hatched areas indicate "Removal of Existing Structures".
- For quantities of "Temporary Concrete Barrier", see Roadway Plans.



TEMPORARY SHEET PILING
(South Abutment)



TEMPORARY SHEET PILING
(North Abutment)

STAGING DETAILS
IL ROUTE 128 OVER
ROBINSON CREEK TRIBUTARY
F.A.P. RTE. 770 - SECTION (115BR)B-1
SHELBY COUNTY
STATION 408+75.45
STRUCTURE NO. 087-0031



DESIGNED -	BAS
CHECKED -	KEF
DRAWN -	LAD
CHECKED -	RJA / KEF