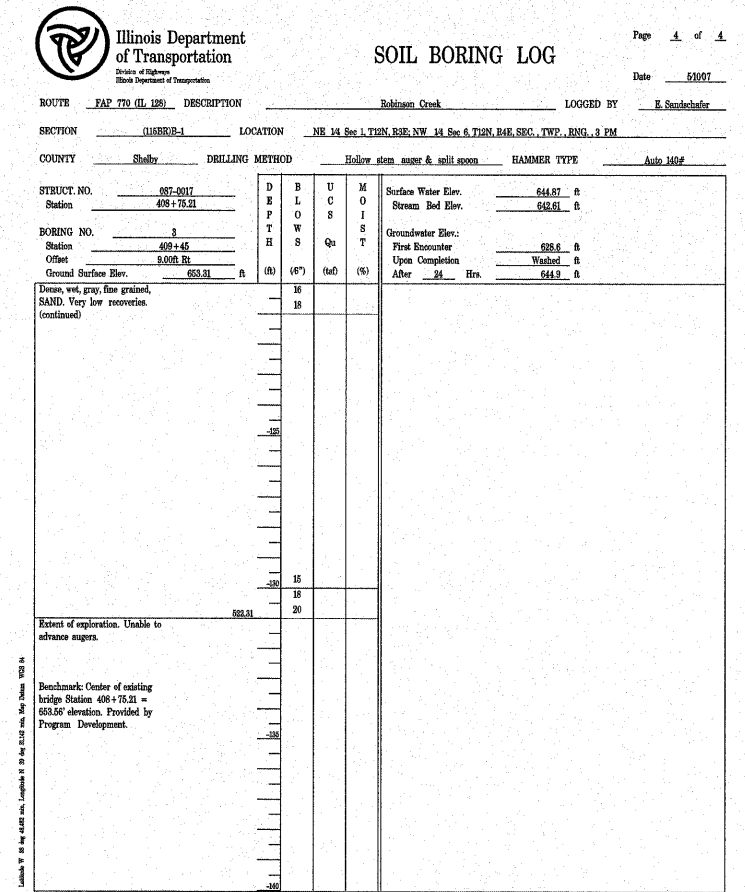
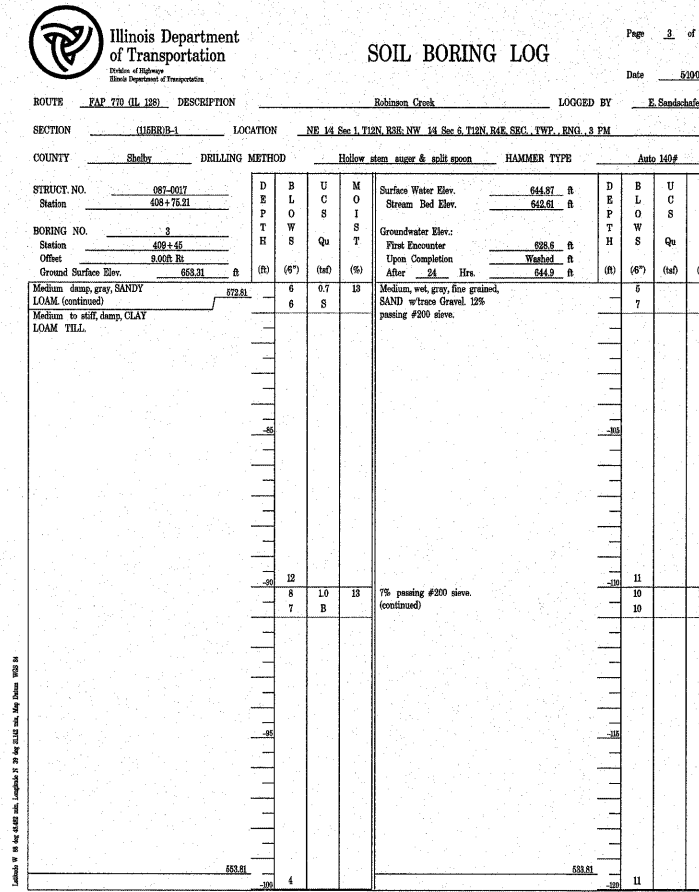
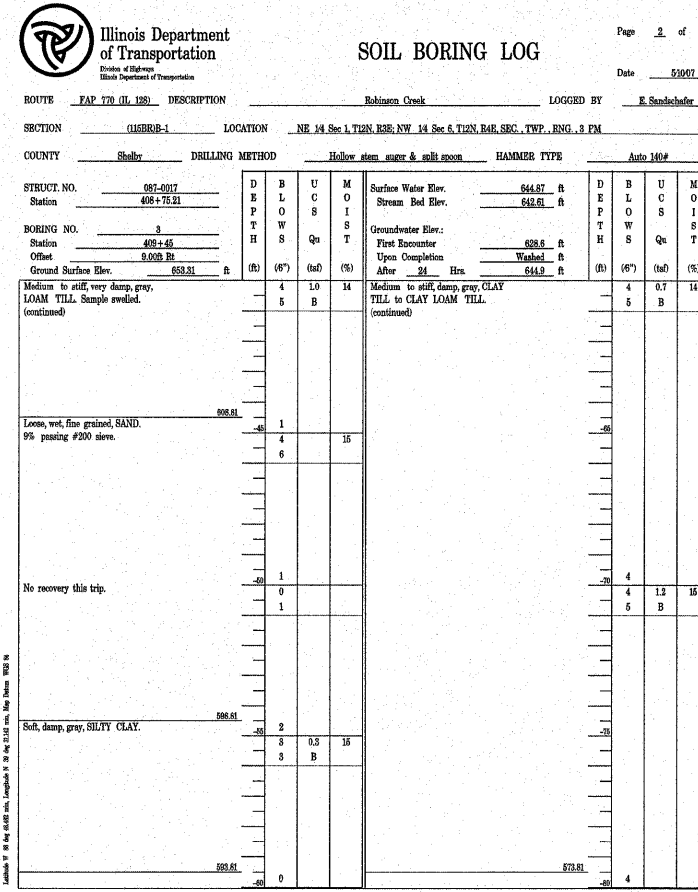
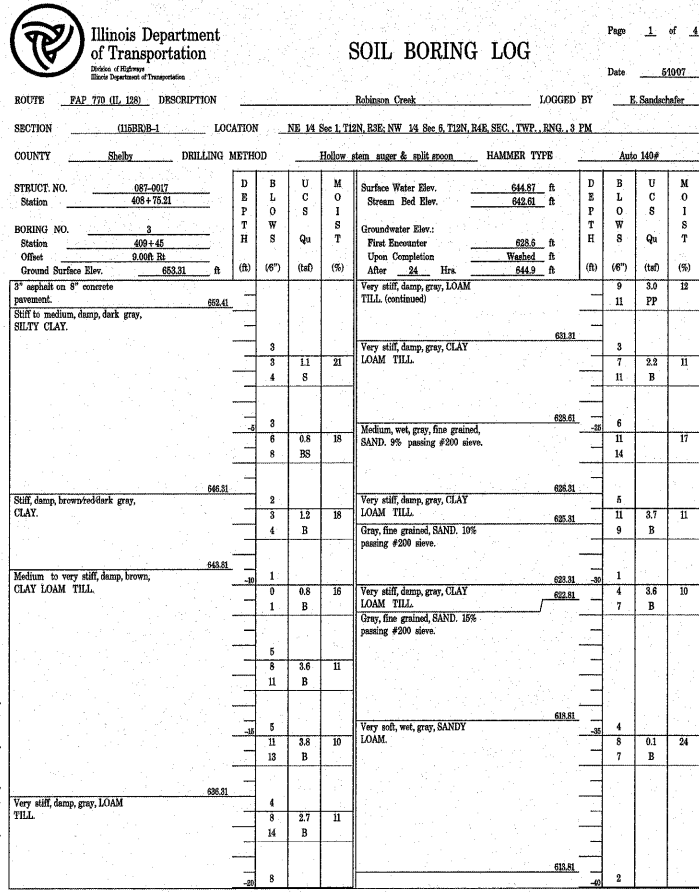


STATE OF ILLINOIS
DEPARTMENT OF TRANSPORTATION

ROUTE NO.	SECTION	COUNTY	POST MILE	SHEET NO.
FAP 770 (IL 128)	(115BR) B-1	SHELBY	39	36
FED. ROAD DIST. NO.	ILLINOIS	FED. AID PROJECT-		

SHEET NO. 19
19 SHEETS

Contract # 74233



DESIGNED - BAS
CHECKED - KEF
DRAWN - SEM
CHECKED - RJA / KEF

SOIL BORINGS
IL ROUTE 128 OVER
ROBINSON CREEK TRIBUTARY
F.A.P. RTE. 770 - SECTION (115BR)B-1
SHELBY COUNTY
STATION 408+75.45
STRUCTURE NO. 087-0031