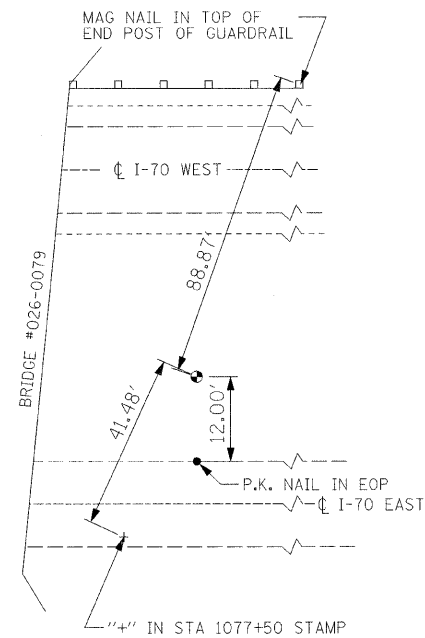
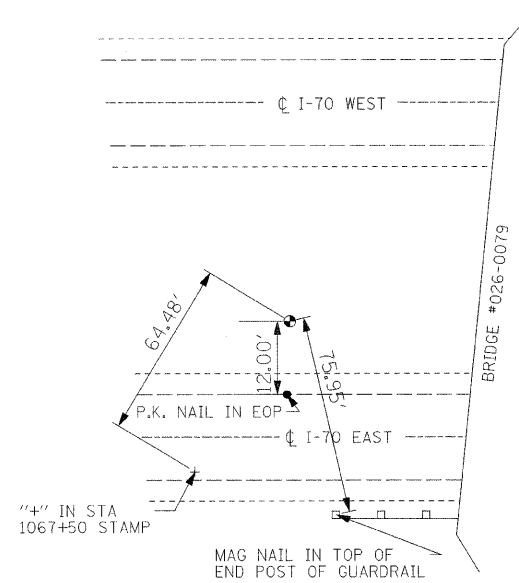


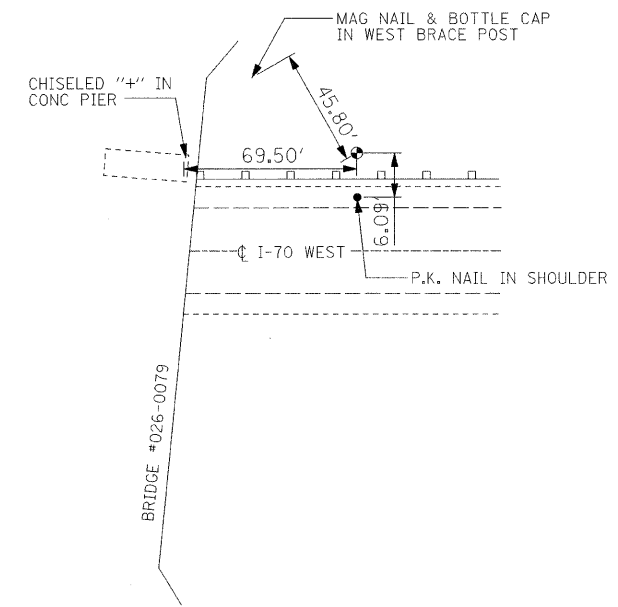
STRUCTURE 026-0079



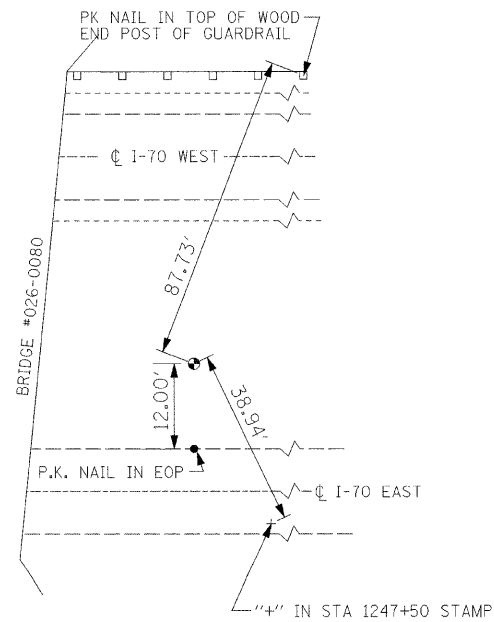
CONTROL POINT #800
 SET 5/8" IRON PIN ±4" DEEP
 N 55000.0000
 E 55000.0000
 ELEV. 99.71'



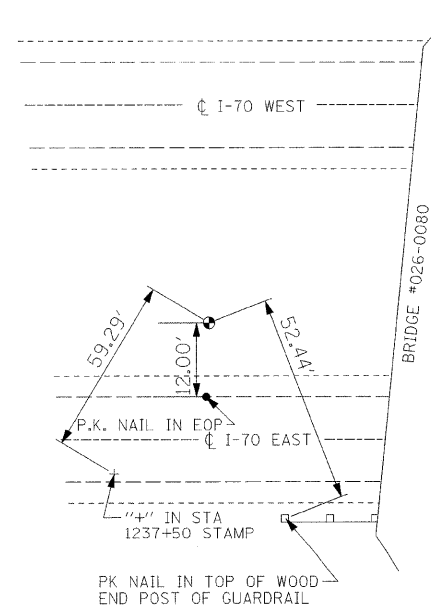
CONTROL POINT #801
 SET 5/8" IRON PIN ±4" DEEP
 N 54661.9382
 E 54091.5186
 ELEV. 97.56'



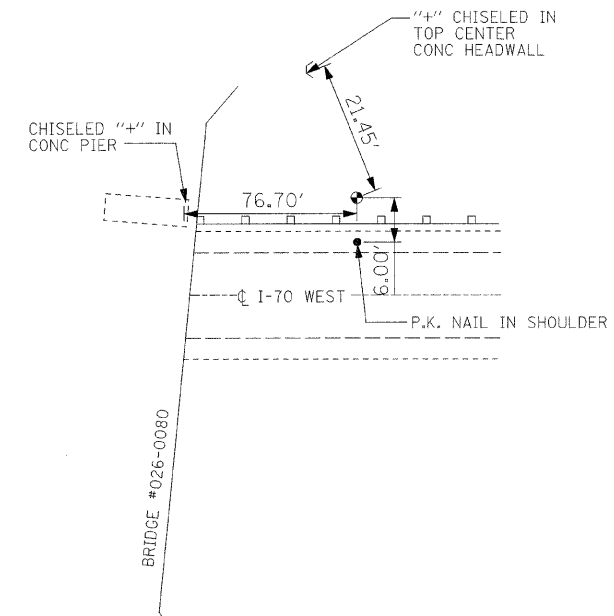
STRUCTURE 026-0080



CONTROL POINT #1
 SET 5/8" IRON PIN ±4" DEEP
 N 65000.0000
 E 65000.0000
 ELEV. 101.63'



CONTROL POINT #2
 SET 5/8" IRON PIN ±4" DEEP
 N 64674.5677
 E 64122.7264
 ELEV. 98.43'



FILE NAME =	USER NAME = swartzw	DESIGNED -	REVISED -
c:\pw_work\pwsdot\swartzw\dms50728\shftg	sp20_74313.dgn	DRAWN -	REVISED -
	PLOT SCALE = 20.0000' / IN.	CHECKED -	REVISED -
	PLOT DATE = 1/28/2009	DATE -	REVISED -

STATE OF ILLINOIS
 DEPARTMENT OF TRANSPORTATION

SCALE: NA SHEET NO. 6 OF 7 SHEETS STA. TO STA.

TIE POINT DETAILS

F.A.I. RTE.	SECTION	COUNTY	TOTAL SHEETS	SHEET NO.
70	D-7 SAFETY 2009-1	FAYETTE	100	13
CONTRACT NO. 74313				
FED. ROAD DIST. NO. ILLINOIS FED. AID PROJECT				