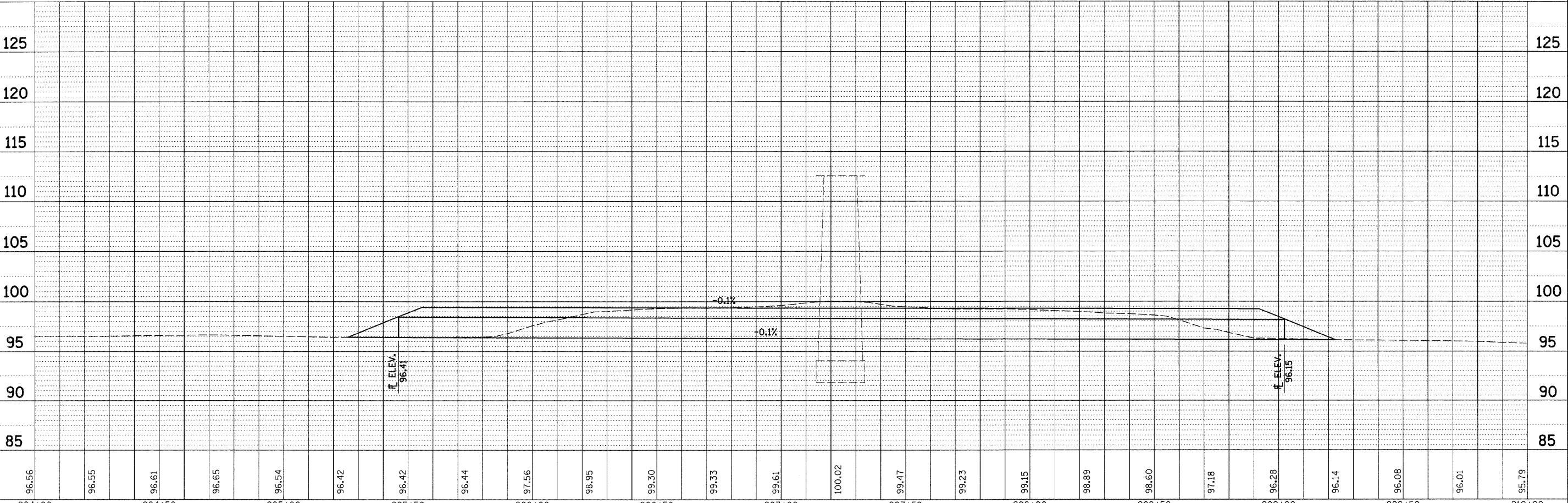
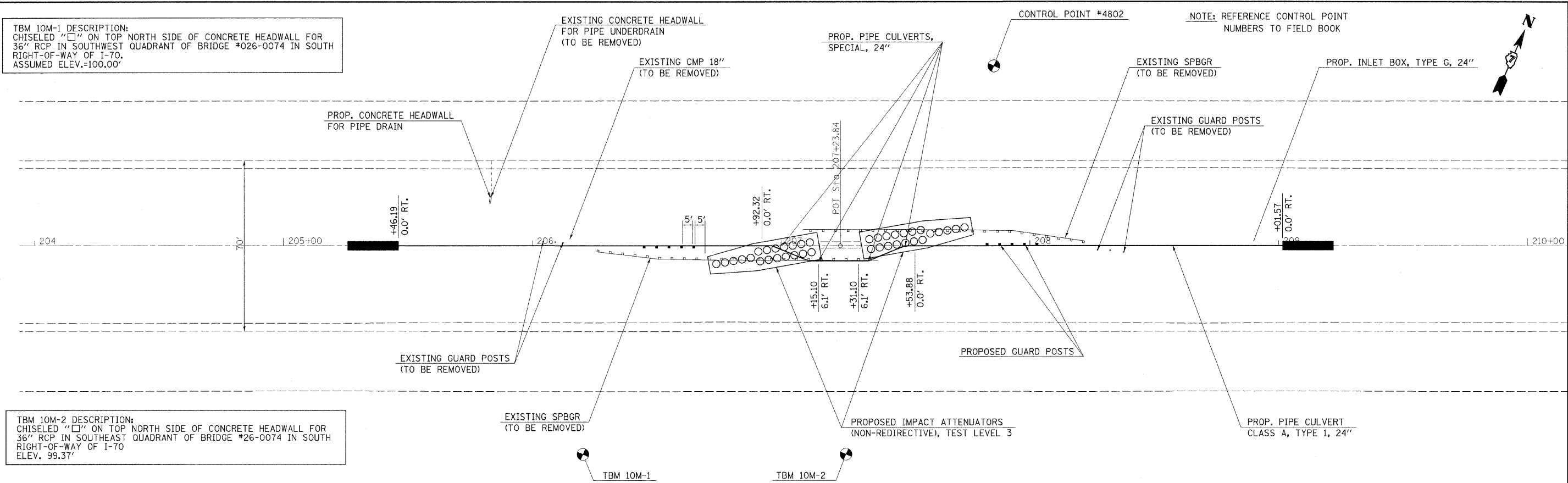


TBM 10M-1 DESCRIPTION:
CHISELED "□" ON TOP NORTH SIDE OF CONCRETE HEADWALL FOR
36" RCP IN SOUTHWEST QUADRANT OF BRIDGE #026-0074 IN SOUTH
RIGHT-OF-WAY OF I-70.
ASSUMED ELEV.=100.00'

TBM 10M-2 DESCRIPTION:
CHISELED "□" ON TOP NORTH SIDE OF CONCRETE HEADWALL FOR
36" RCP IN SOUTHWEST QUADRANT OF BRIDGE #26-0074 IN SOUTH
RIGHT-OF-WAY OF I-70
ELEV. 99.37'



FILE NAME =	USER NAME = swartzw	DESIGNED -	REVISED -
c:\pw\work\p\dot\swartzw\dms50728\http&	28.74313.dgn	DRAWN -	REVISED -
	PLOT SCALE = 20.0000' / IN.	CHECKED -	REVISED -
	PLOT DATE = 1/20/2009	DATE -	REVISED -

**STATE OF ILLINOIS
DEPARTMENT OF TRANSPORTATION**

PLAN PROFILE 026-0074
SCALE: 20 SHEET NO. 8 OF 15 SHEETS STA. 204+00 TO STA. 210+00

F.A.J. RTE.	SECTION	COUNTY	TOTAL SHEETS	SHEET NO.
70	D-7 SAFETY 2009-1	FAYETTE	100	22
CONTRACT NO. 74313				
FED. ROAD DIST. NO. ILLINOIS FED. AID PROJECT				

PLAN	DATE
BY	
DESIGNED	
DRAWN	
CHECKED	
NOTED	
DATE	

PROFILE	DATE
BY	
DESIGNED	
DRAWN	
CHECKED	
NOTED	
DATE	