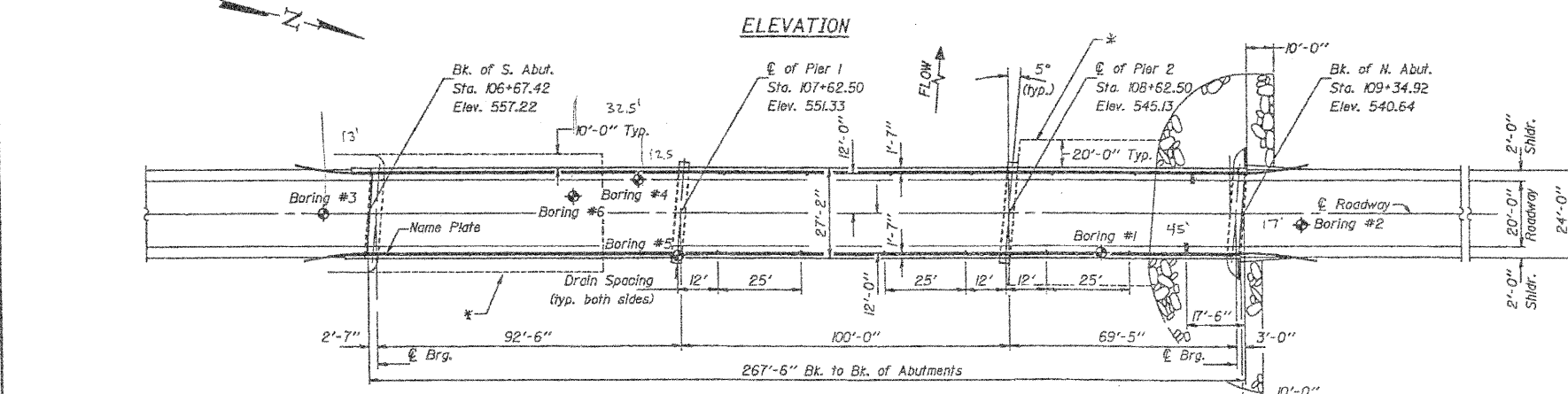
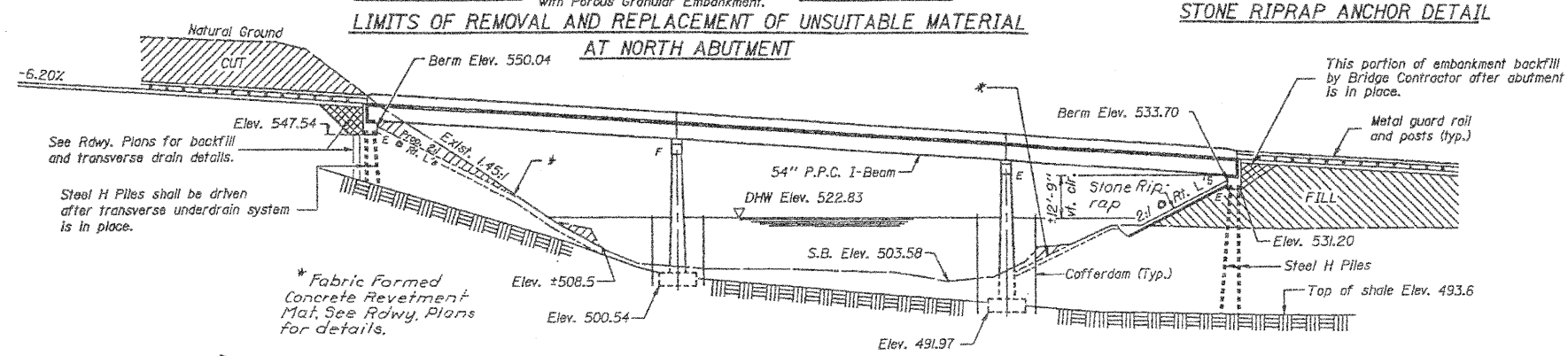
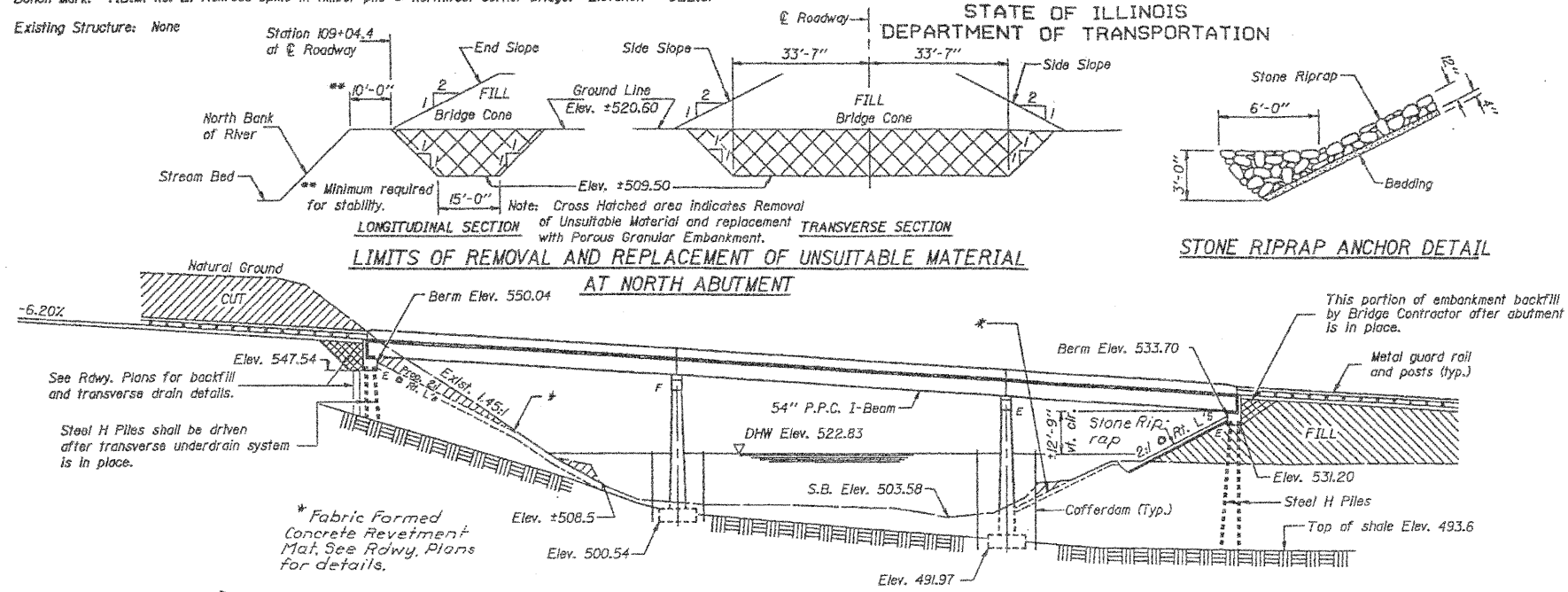


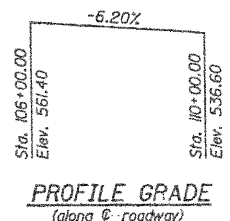
STATE OF ILLINOIS  
DEPARTMENT OF TRANSPORTATION

DATE	SECTION	COUNTY	TOTAL SHEETS	SHEET NO.
TR 389	100BR	SHELBY	76	24
				20 SHEETS

Bench Mark: T.B.M. No. 2; Railroad spike in timber pile at Northwest corner bridge. Elevation = 522.31  
Existing Structure: None



KASKASKIA RIVER  
BUILT BY  
ROAD DISTRICT  
SHELBY COUNTY - SECTION 100BR  
PROJECT KAROS-173 (62)  
STA. 106+01.17  
STR. NO. 087-3434 LOADING HS20  
NAME PLATE  
See Std. 2113

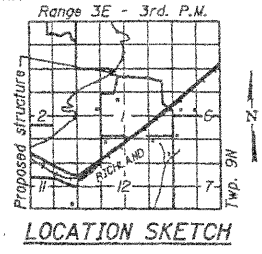


**WATERWAY INFORMATION**  
Drainage Area = 1240 sq. mi. Low Grade Elev. 520.39 @ Sta. 117+00.00

Flood	Freq. Yr.	Q C.F.S.	Opening Sq. Ft.	Nat. H.W.E. Exist.	Prop. H.W.E. Exist.	Head - Ft. Exist.	Prop. Headwater El.
Design	15	10558	1952	2231	522.83	0	0.12 522.83 522.95
Base	100	13313	2048	2342	523.47	0	0.38 523.47 523.85
Overtopping	5	8727	1875	2141	522.31	0	0 522.31 522.31
Max. Calc.	500	15574	2122	2430	523.97	0.16	0.62 524.13 524.59

**DESIGN SPECIFICATIONS**  
1983 AASHTO, 1984 and 1985 Interim Specifications.  
**LOADING HS20-44**  
Allow 25#/sq. ft. for future wearing surface.

**DESIGN STRESSES**  
**FIELD UNITS**  
f<sub>c</sub> = 3,500 psi  
f<sub>y</sub> = 60,000 psi (Reinf.)  
f<sub>y</sub> = 36,000 psi AASHTO M-183 (Struct. Steel)  
**PRECAST PRESTRESSED UNITS**  
f<sub>c</sub> = See sheets 8, 9 & 10 of 20  
f<sub>ci</sub> = See sheets 8, 9 & 10 of 20  
f<sub>s</sub> = 270,000 psi (1/2" # strands)  
f<sub>s</sub> = 183,000 psi (3/8" # strands)



**GENERAL PLAN**  
TR 389 OVER KASKASKIA RIVER  
TR 389 SECTION 100BR  
SHELBY COUNTY  
STATION 108+01.17  
STRUCTURE NO. 087-3434

DESIGNED	SA	SA
CHECKED	SA	SA
DRAWN	F.M.	
CHECKED	SA	SA

3-18-86

January 7 1987  
EXAMINED  
PASSED  
APPROVED

**Johnson, Depp & Quisenberry**  
CONSULTING ENGINEERS  
Springfield, Illinois

DESIGNED:	IDOT	DRAWN:	PTR
CHECKED:	DCD	CHECKED:	DCD

**NOTE:**  
SOIL BORING INFORMATION ON THIS SHEET IS FOR REFERENCE ONLY, AND IS TAKEN FROM THE 1987 PLANS FOR THE ADJACENT TR 389 BRIDGE, LOCATED ABOUT 150 FEET UPSTREAM FROM THE COVERED BRIDGE.

**SOIL BORINGS (2 OF 4)**  
THOMPSON MILL COVERED BRIDGE OVER  
KASKASKIA RIVER  
STRUCTURE NO. 087-0019

SHEET 10 OF 12	T.R. RTE. 389A	SECTION D-7 Bridge Appr. 2009-1	COUNTY SHELBY	TOTAL SHEETS 14	SHEET NO. 12
STA. 50+00			CONTRACT NO. 74337		
FED. ROAD DIST. NO.		ILLINOIS FED. AID PROJECT			

FILE: J:\DD\M0161L-D7V44 Thompson Mill Covered Bridge\ThompsonMill\09borings.dgn  
USER: DCD  
DATE: 02/04/2009 16:39:25