

F.A.P. RTE.	SECTION	COUNTY	TOTAL SHEETS	SHEET NO.
323	(13X)I-3	MACON	7	1
FED. ROAD DIST. NO.	ILLINOIS	CONTRACT NO. 74342		

STATE OF ILLINOIS  
DEPARTMENT OF TRANSPORTATION  
DIVISION OF HIGHWAYS

**PROPOSED  
HIGHWAY PLANS**

F.A.P. ROUTE 323 (U.S. ROUTE 36)  
SECTION (13X)I-3

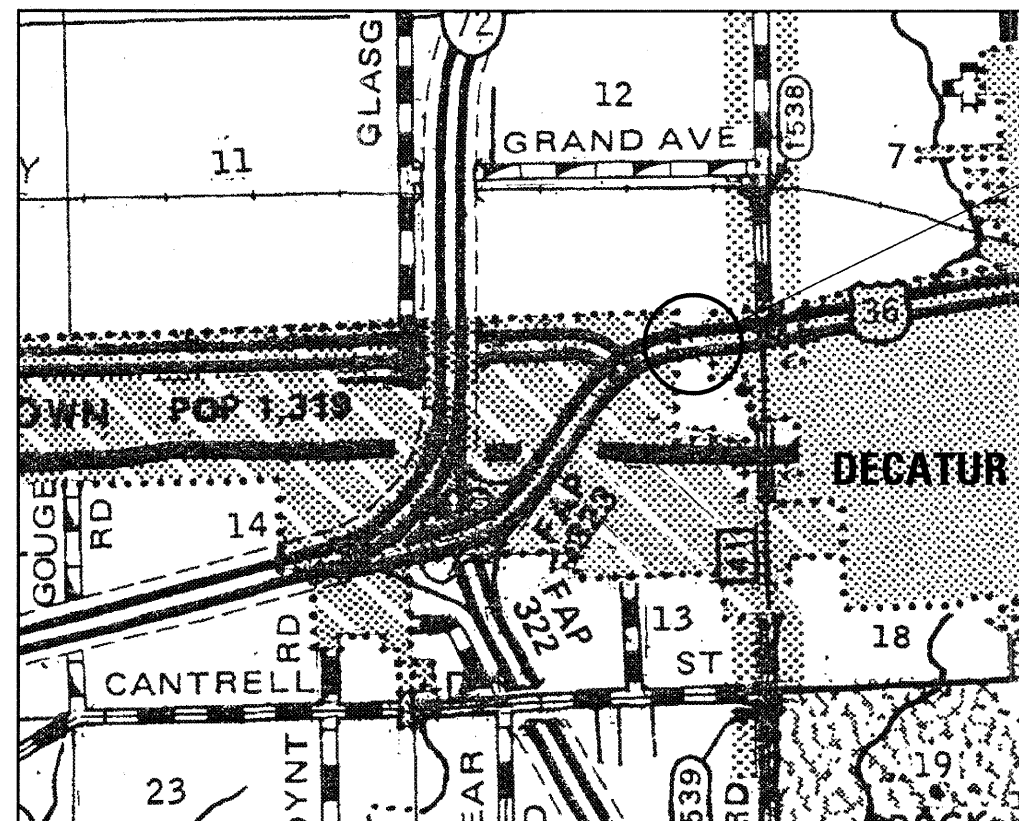
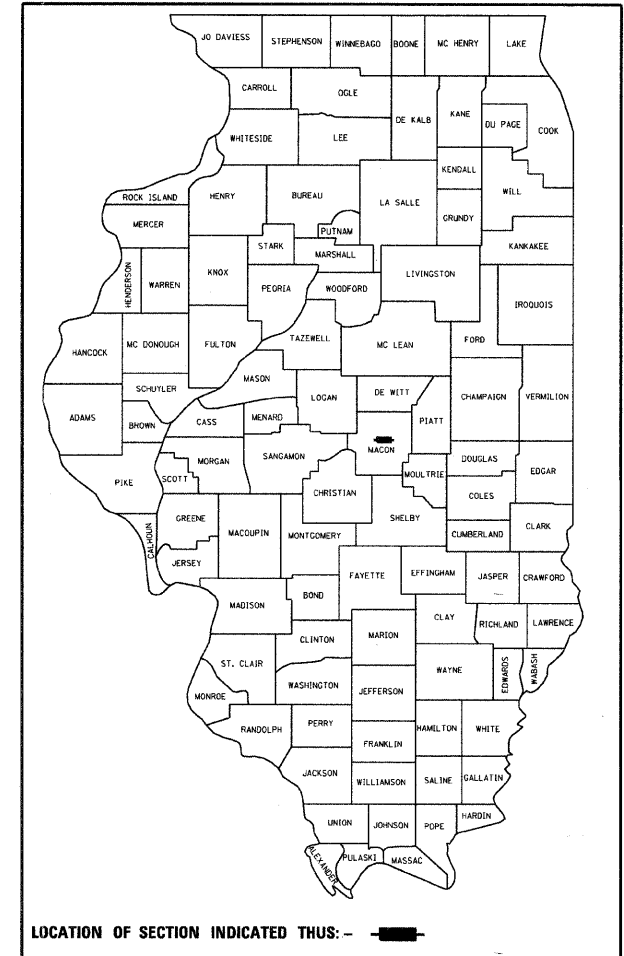
**RCCP CULVERT INSTALLATION  
MACON COUNTY**

C-97-110-08

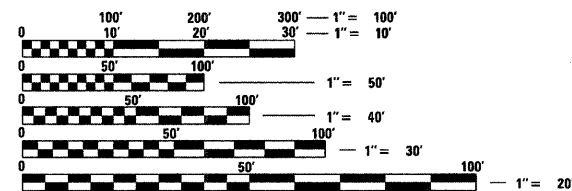
FOR INDEX OF SHEETS, SEE SHEET NO. 2

2007 ADT = 8500

D-97-058-08



F.A.P. ROUTE 323  
SECTION (13X)I-3  
MACON COUNTY  
STATION 635+87



FULL SIZE PLANS HAVE BEEN PREPARED USING STANDARD ENGINEERING SCALES. REDUCED SIZED PLANS WILL NOT CONFORM TO STANDARD SCALES. IN MAKING MEASUREMENTS ON REDUCED PLANS, THE ABOVE SCALES MAY BE USED.

J.U.L.I.E.  
JOINT UTILITY LOCATION INFORMATION FOR EXCAVATION  
1-800-892-0123  
OR 811

PROJECT ENGINEER: TOM RONAN

CONTRACT NO. 74342

GROSS LENGTH = 100 FT. = 0.019 MILE

NET LENGTH = 100 FT. = 0.019 MILE

STATE OF ILLINOIS  
DEPARTMENT OF TRANSPORTATION  
DIVISION OF HIGHWAYS

SUBMITTED February 3 20 09

*Roger J. Shubert*  
DEPUTY DIRECTOR OF HIGHWAYS, REGION ENGINEER

March 27, 20 09  
*Charles J. Ingersoll*  
ENGINEER OF DESIGN AND ENVIRONMENT

March 27, 20 09  
*Christine M. Reed*  
DIRECTOR OF HIGHWAYS, CHIEF ENGINEER

**PRINTED BY THE AUTHORITY  
OF THE STATE OF ILLINOIS**