

F.A.P. RTE.	SECTION	COUNTY	TOTAL SHEETS	SHEET NO.
310	60-15-2 60-15HB-2	MADISON	272	30
STA.		TO STA.		
FED. ROAD DIST. NO.		ILLINOIS FED. AID PROJECT		
CONTRACT NO. 76624				

PR FAP 310 CURVE NO 3
 PI STA = 39+183.523
 $\Delta = 62^\circ 37' 42''$ (RT)
 R = 780.000 m
 T = 474.512 m
 L = 852.596 m
 E = 132.996 m
 SE = 5.5%
 PC STA = 38+709.010
 295 PT STA = 39+561.606

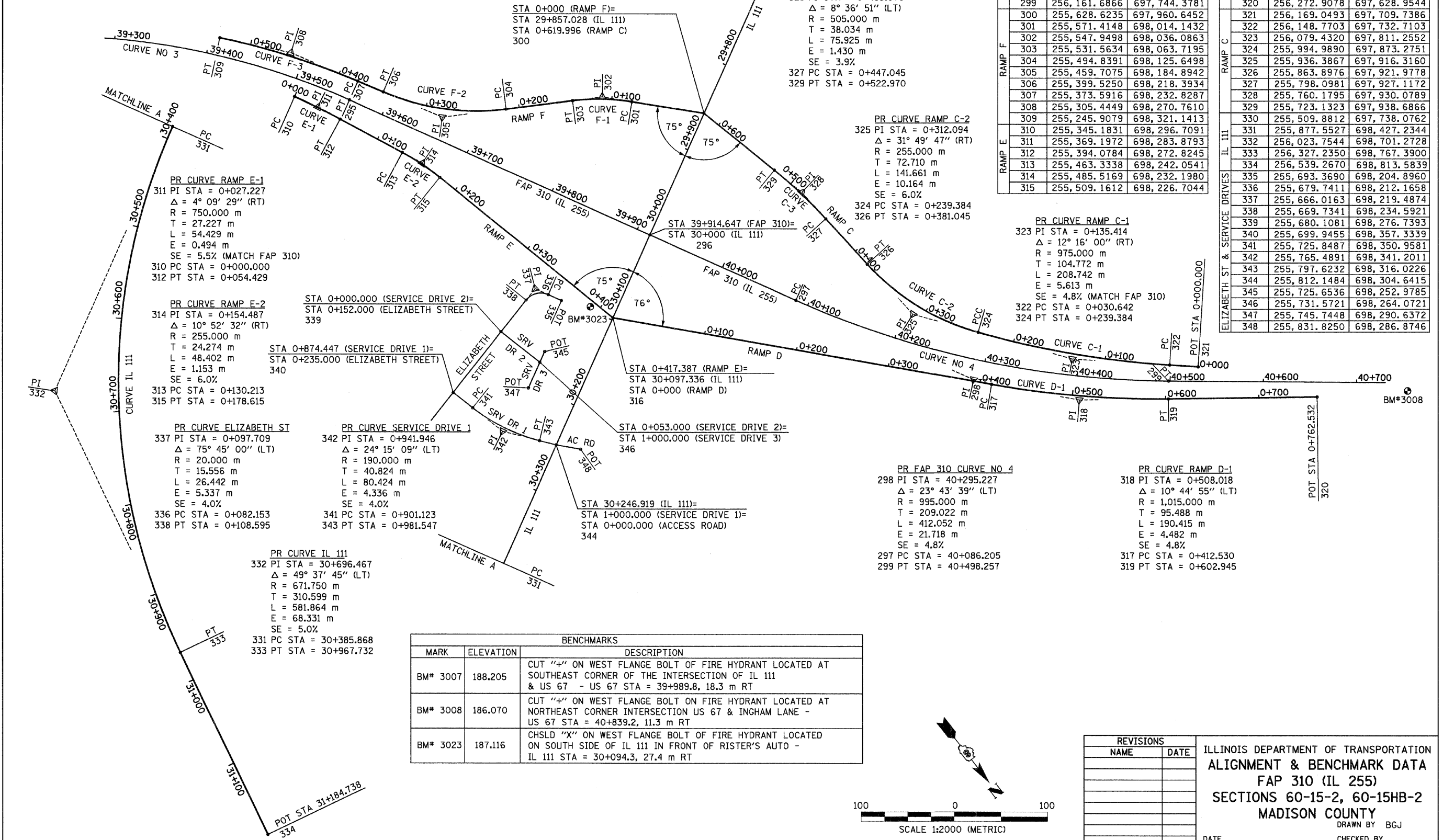
PR CURVE RAMP F-3
 308 PI STA = 0+456.364
 $\Delta = 11^\circ 08' 11''$ (LT)
 R = 800.000 m
 T = 77.993 m
 L = 155.494 m
 E = 3.793 m
 SE = 5.5% (MATCH FAP 310)
 307 PC STA = 0+378.372
 309 PT STA = 0+533.866

PR CURVE RAMP F-2
 305 PI STA = 0+283.025
 $\Delta = 30^\circ 13' 51''$ (RT)
 R = 255.000 m
 T = 68.878 m
 L = 134.545 m
 E = 9.138 m
 SE = 6.0%
 304 PC STA = 0+214.147
 306 PT STA = 0+348.692

PR CURVE RAMP F-1
 302 PI STA = 0+110.452
 $\Delta = 16^\circ 15' 07''$ (LT)
 R = 225.000 m
 T = 32.126 m
 L = 63.821 m
 E = 2.282 m
 SE = 5.6%
 301 PC STA = 0+078.325
 303 PT STA = 0+142.147

CONTROL POINTS		
POINT	NORTHING	EASTING
295	255,384.0772	698,252.2896
296	255,695.9215	698,086.7876
297	255,847.4601	698,006.3632
298	256,032.0913	697,908.3758
299	256,161.6866	697,744.3781
300	255,628.6235	697,960.6452
301	255,571.4148	698,014.1432
302	255,547.9498	698,036.0863
303	255,531.5634	698,063.7195
304	255,494.8391	698,125.6498
305	255,459.7075	698,184.8942
306	255,399.5250	698,218.3934
307	255,373.5916	698,232.8287
308	255,305.4449	698,270.7610
309	255,245.9079	698,321.1413
310	255,345.1831	698,296.7091
311	255,369.1972	698,283.8793
312	255,394.0784	698,272.8245
313	255,463.3338	698,242.0541
314	255,485.5169	698,232.1980
315	255,509.1612	698,226.7044

CONTROL POINTS		
POINT	NORTHING	EASTING
316	255,741.7385	698,172.6663
317	256,047.9211	697,896.2004
318	256,118.7927	697,832.2073
319	256,176.4860	697,756.1192
320	256,272.9078	697,628.9544
321	256,169.0493	697,709.7386
322	256,148.7703	697,732.7103
323	256,079.4320	697,811.2552
324	255,994.9890	697,873.2751
325	255,936.3867	697,916.3160
326	255,863.8976	697,921.9778
327	255,798.0981	697,927.1172
328	255,760.1795	697,930.0789
329	255,723.1323	697,938.6866
330	255,509.8812	697,738.0762
331	255,877.5527	698,427.2344
332	256,023.7544	698,701.2728
333	256,327.2350	698,767.3900
334	256,539.2670	698,813.5839
335	255,693.3690	698,204.8960
336	255,679.7411	698,212.1658
337	255,666.0163	698,219.4874
338	255,669.7341	698,234.5921
339	255,680.1081	698,276.7393
340	255,699.9455	698,357.3339
341	255,725.8487	698,350.9581
342	255,765.4891	698,341.2011
343	255,797.6232	698,316.0226
344	255,812.1484	698,304.6415
345	255,725.6536	698,252.9785
346	255,731.5721	698,264.0721
347	255,745.7448	698,290.6372
348	255,831.8250	698,286.8746



PR CURVE RAMP E-1
 311 PI STA = 0+027.227
 $\Delta = 4^\circ 09' 29''$ (RT)
 R = 750.000 m
 T = 27.227 m
 L = 54.429 m
 E = 0.494 m
 SE = 5.5% (MATCH FAP 310)
 310 PC STA = 0+000.000
 312 PT STA = 0+054.429

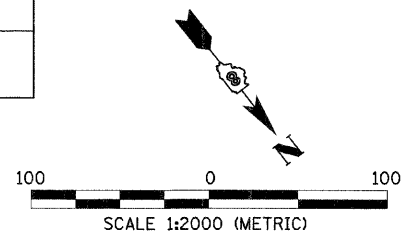
PR CURVE RAMP E-2
 314 PI STA = 0+154.487
 $\Delta = 10^\circ 52' 32''$ (RT)
 R = 255.000 m
 T = 24.274 m
 L = 48.402 m
 E = 1.153 m
 SE = 6.0%
 313 PC STA = 0+130.213
 315 PT STA = 0+178.615

PR CURVE ELIZABETH ST
 337 PI STA = 0+097.709
 $\Delta = 75^\circ 45' 00''$ (LT)
 R = 20.000 m
 T = 15.556 m
 L = 26.442 m
 E = 5.337 m
 SE = 4.0%
 336 PC STA = 0+082.153
 338 PT STA = 0+108.595

PR CURVE SERVICE DRIVE 1
 342 PI STA = 0+941.946
 $\Delta = 24^\circ 15' 09''$ (LT)
 R = 190.000 m
 T = 40.824 m
 L = 80.424 m
 E = 4.336 m
 SE = 4.0%
 341 PC STA = 0+901.123
 343 PT STA = 0+981.547

PR CURVE IL 111
 332 PI STA = 30+696.467
 $\Delta = 49^\circ 37' 45''$ (LT)
 R = 671.750 m
 T = 310.599 m
 L = 581.864 m
 E = 68.331 m
 SE = 5.0%
 331 PC STA = 30+385.868
 333 PT STA = 30+967.732

BENCHMARKS		
MARK	ELEVATION	DESCRIPTION
BM# 3007	188.205	CUT "+" ON WEST FLANGE BOLT OF FIRE HYDRANT LOCATED AT SOUTHEAST CORNER OF THE INTERSECTION OF IL 111 & US 67 - US 67 STA = 39+989.8, 18.3 m RT
BM# 3008	186.070	CUT "+" ON WEST FLANGE BOLT ON FIRE HYDRANT LOCATED AT NORTHEAST CORNER INTERSECTION US 67 & INGHAM LANE - US 67 STA = 40+839.2, 11.3 m RT
BM# 3023	187.116	CHSLD "X" ON WEST FLANGE BOLT OF FIRE HYDRANT LOCATED ON SOUTH SIDE OF IL 111 IN FRONT OF RISTER'S AUTO - IL 111 STA = 30+094.3, 27.4 m RT



REVISIONS	
NAME	DATE

ILLINOIS DEPARTMENT OF TRANSPORTATION
ALIGNMENT & BENCHMARK DATA
 FAP 310 (IL 255)
 SECTIONS 60-15-2, 60-15HB-2
 MADISON COUNTY
 DRAWN BY B.G.J.
 CHECKED BY
 DATE

12/7/2007

p:\2007\1es\020224\dl111\detail\smisc\alignmt_b.m.dgn