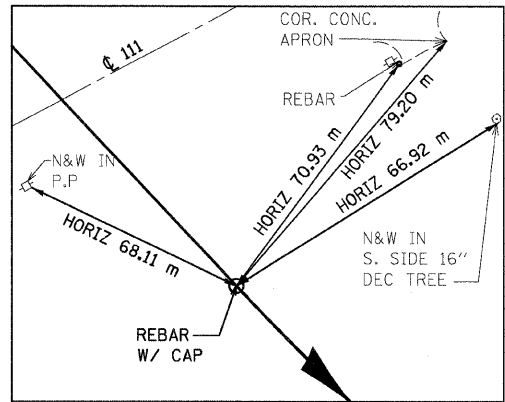
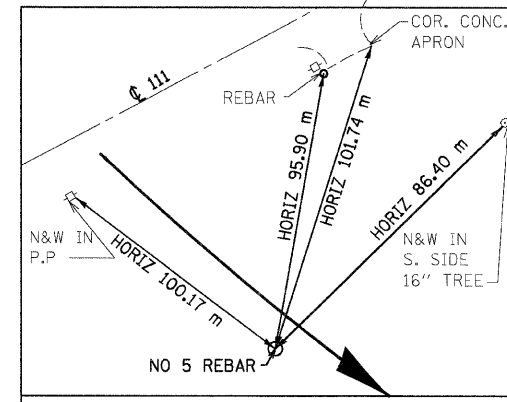


F.A.P. RTE.	SECTION	COUNTY	TOTAL SHEETS	SHEET NO.
310	60-15-2 60-15HB-2	MADISON	272	33
STA.		TO STA.		
FED. ROAD DIST. NO.		ILLINOIS FED. AID PROJECT		
CONTRACT NO. 76624				



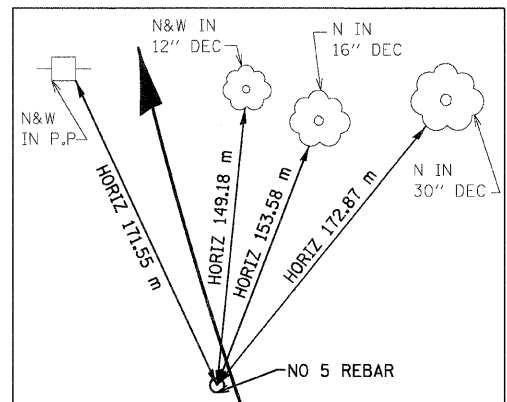
RAMP F PC STA 0+078.325

N 255,571.4148 E 698,014.1432



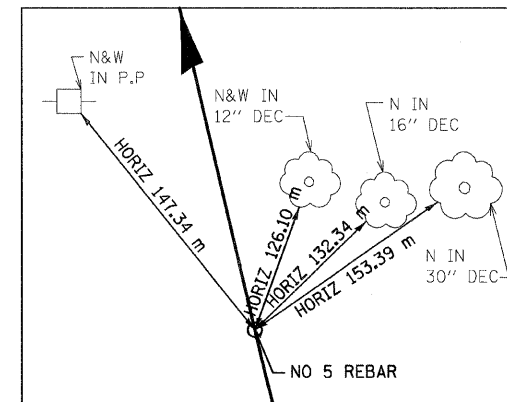
RAMP F PI STA 0+110.452

N 255,547.9498 E 698,036.0863



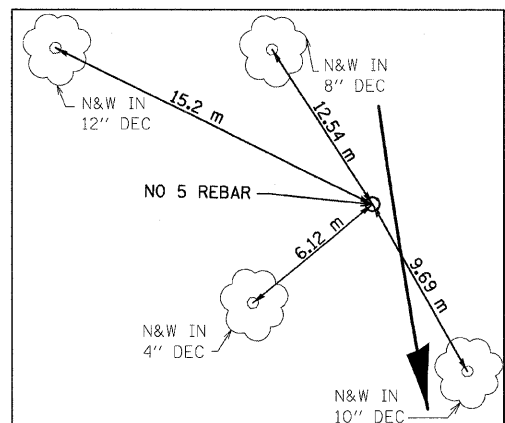
RAMP E PI STA 0+154.487

N 255,485.5169 E 698,232.1980



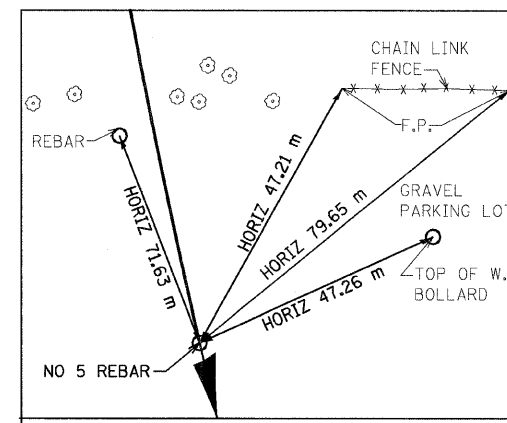
RAMP E PT STA 0+178.615

N 255,509.1612 E 698,226.7044



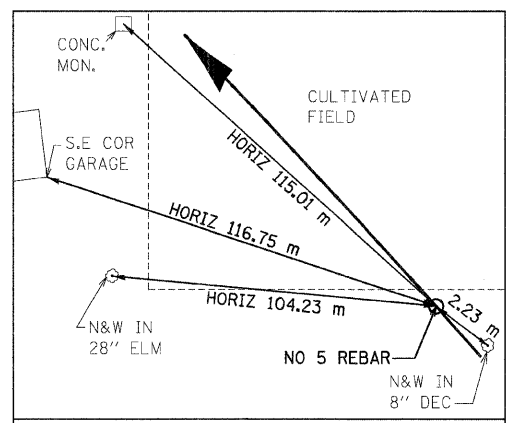
RAMP C PI STA 0+485.079

N 255,760.1795 E 697,930.0789



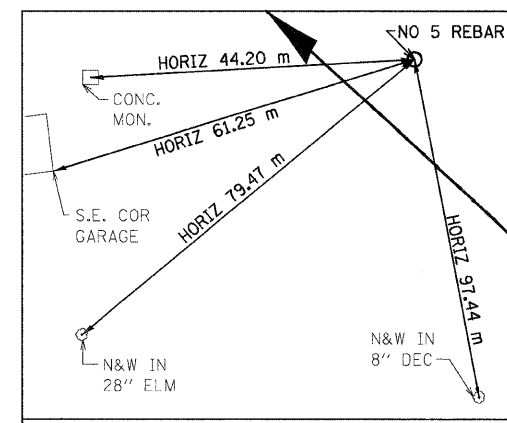
RAMP C PT STA 0+522.970

N 255,723.1323 E 697,938.6866



RAMP D PC STA 0+412.530

N 256,047.9211 E 697,896.2004



RAMP D PI STA 0+508.018

N 256,118.7927 E 697,832.2073

NOTES:

- 1) DIMENSIONS LABELED "HORIZ" ARE HORIZONTAL PULLS.
- 2) DIMENSIONS NOT LABELED "HORIZ" ARE DIRECT PULLS.



(TYP ALL TIES THIS DWG)

REVISIONS	
NAME	DATE

ILLINOIS DEPARTMENT OF TRANSPORTATION  
HORIZONTAL CONTROL TIES  
FAP 310 (IL 255)  
SECTION 60-15-2 & 60-15HB-2  
MADISON COUNTY  
DRAWN BY KAH  
CHECKED BY  
DATE

12/7/2007

p:\00f1es\000024\dl111\Detail\Misc\ties.dgn