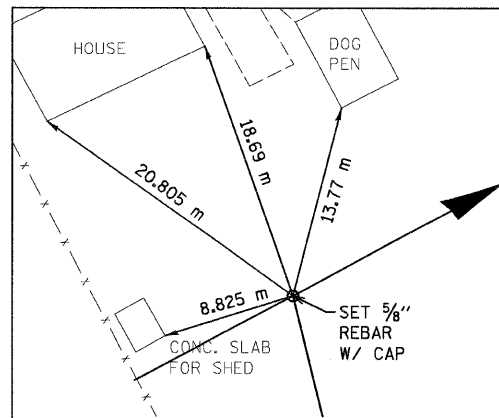
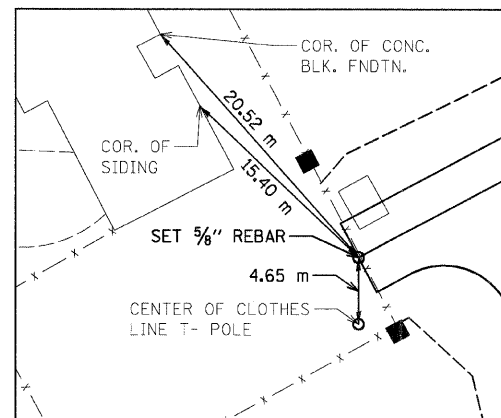


F.A.P. RTE.	SECTION	COUNTY	TOTAL SHEETS	SHEET NO.
310	60-15-2 60-15HB-2	MADISON	272	35
STA.		TO STA.		
FED. ROAD DIST. NO.		ILLINOIS FED. AID PROJECT		
CONTRACT NO. 76624				



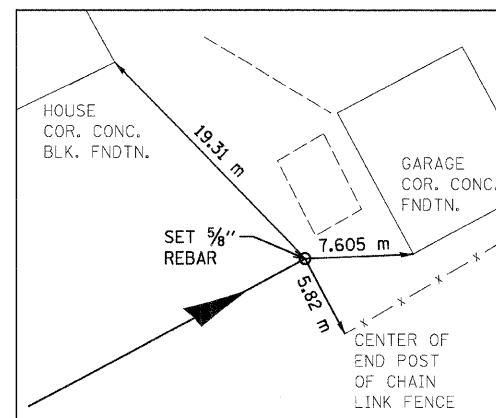
SERVICE DRIVE 2 STA 0+053.000
SERVICE DRIVE 3 STA 1+000.000

N 255,731.5721 E 698,264.0721



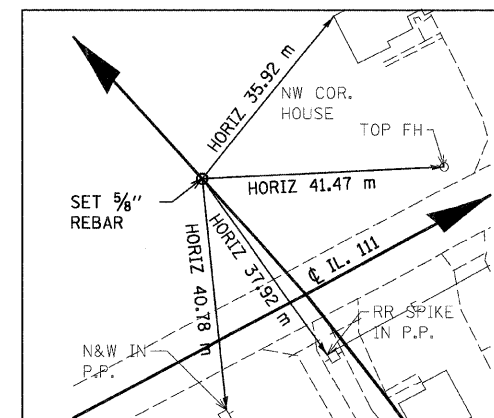
SERVICE DRIVE 3 STA 0+987.426

N 255,725.6536 E 698,252.9785



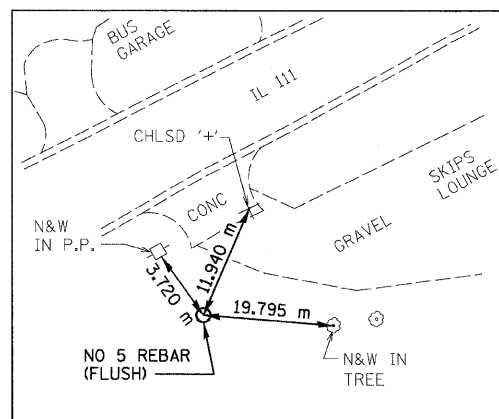
SERVICE DRIVE 3 STA 1+030.109

N 255,745.7448 E 698,290.6372



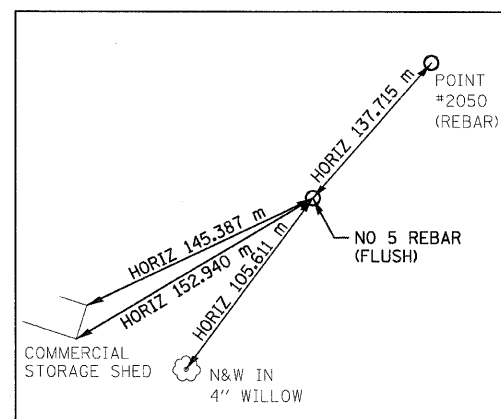
ACCESS ROAD
POT STA 0+026.511

N 255,831.8250 E 698,286.8746



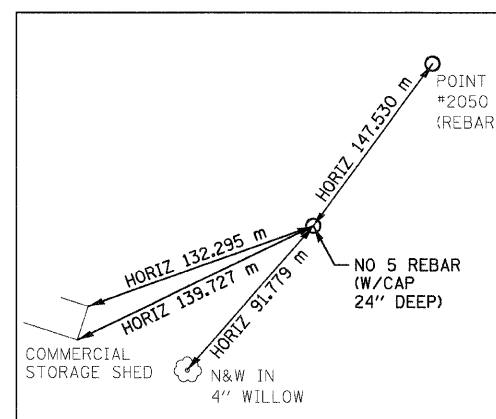
TRAVERSE POINT #2050
STA 39+897.86 m LT

N 255,640.0178 E 698,019.0958



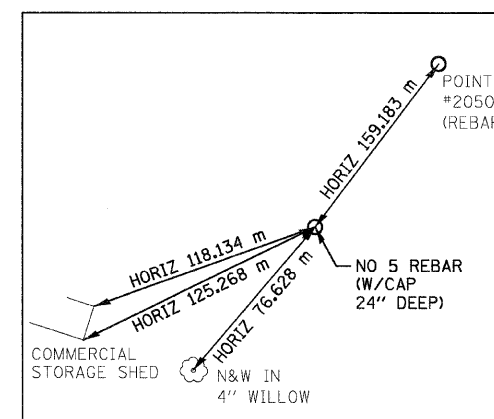
DRAINAGE DITCH
BEGIN POT STA 0+000.000

N 255,511.1290 E 698,060.7320



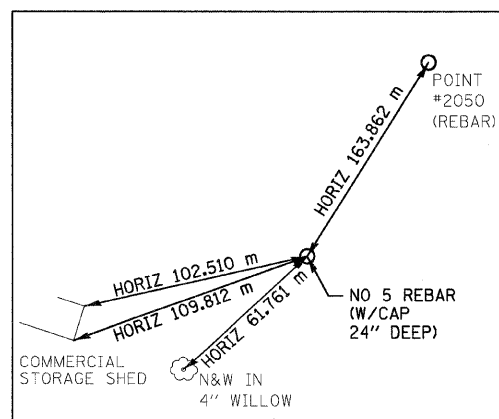
DRAINAGE DITCH
PC STA 0+014.235

N 255,498.8851 E 698,053.4715



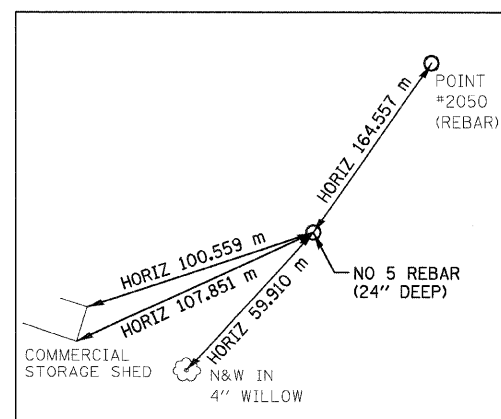
DRAINAGE DITCH
PI STA 0+030.000

N 255,485.3250 E 698,045.4304



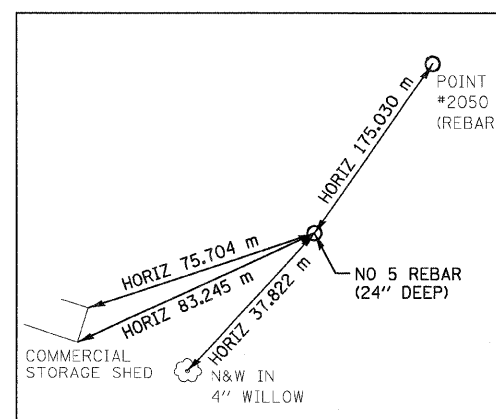
DRAINAGE DITCH
PT STA 0+044.778

N 255,478.8294 E 698,031.0658



DRAINAGE DITCH
PC STA 0+046.789

N 255,478.0008 E 698,029.2333



DRAINAGE DITCH
PI STA 0+072.013

N 255,467.6079 E 698,006.2501

NOTES:

- 1) DIMENSIONS LABELED "HORIZ" ARE HORIZONTAL PULLS.
- 2) DIMENSIONS NOT LABELED "HORIZ" ARE DIRECT PULLS.



REVISIONS	
NAME	DATE

ILLINOIS DEPARTMENT OF TRANSPORTATION
HORIZONTAL CONTROL TIES
FAP 310 (IL 255)
SECTION 60-15-2 & 60-15HB-2
MADISON COUNTY
DRAWN BY KAH
CHECKED BY
DATE

(TYP ALL TIES THIS DWG)

12/7/2007

p:\00Files\0002024\dl\111\Details\Misc\ties.dgn