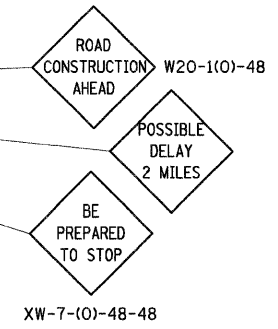


F.A.P. RTE.	SECTION	COUNTY	TOTAL SHEETS	SHEET NO.
310	60-15-2 60-15HB-2	MADISON	272	37
STA.		TO STA.		
FED. ROAD DIST. NO.		ILLINOIS FED. AID PROJECT		
CONTRACT NO. 76624				



GENERAL NOTES

1. ALL SIGNS SHOWN SHALL BE COVERED OR REMOVED AT THE END OF EACH WORK DAY.
2. ALL SIGNS SHOWN SHALL BE 1.22m x 1.22m AND HAVE 150mm "D" SIZE LETTERS AND NUMBERS ON A FLOURESCENT ORANGE REFLECTIVE BACKGROUND.
3. ALL SIGNS SHOWN SHALL BE FURNISHED, ERECTED, AND MAINTAINED BY THE CONTRACTOR.
4. THE LONGITUDINAL DIMENSIONS MAY BE ADJUSTED TO FIT FIELD CONDITIONS.
5. ALL SIGNS SHOWN SHALL BE REMOVED WHEN NOT REQUIRED FOR FUTURE USE.
6. THE COST OF ALL FLAGGERS AND TRAFFIC CONTROL DEVICES AS HEREIN SPECIFIED SHALL BE INCLUDED IN THE CONTRACT LUMP SUM PRICE FOR TRAFFIC CONTROL AND PROTECTION, (SPECIAL).
7. EXACT LOCATION OF ALL TRAFFIC CONTROL ITEMS SHALL BE APPROVED BY THE ENGINEER.
8. MESSAGE BOARDS SHALL BE PLACED ALONG US 67 TO PROVIDE INFORMATION INDICATING THAT THE DELAY IS ON IL 111. THE COST OF THESE SIGNS SHALL BE INCLUDED IN THE CONTRACT LUMP SUM PRICE FOR TRAFFIC CONTROL AND PROTECTION, (SPECIAL).

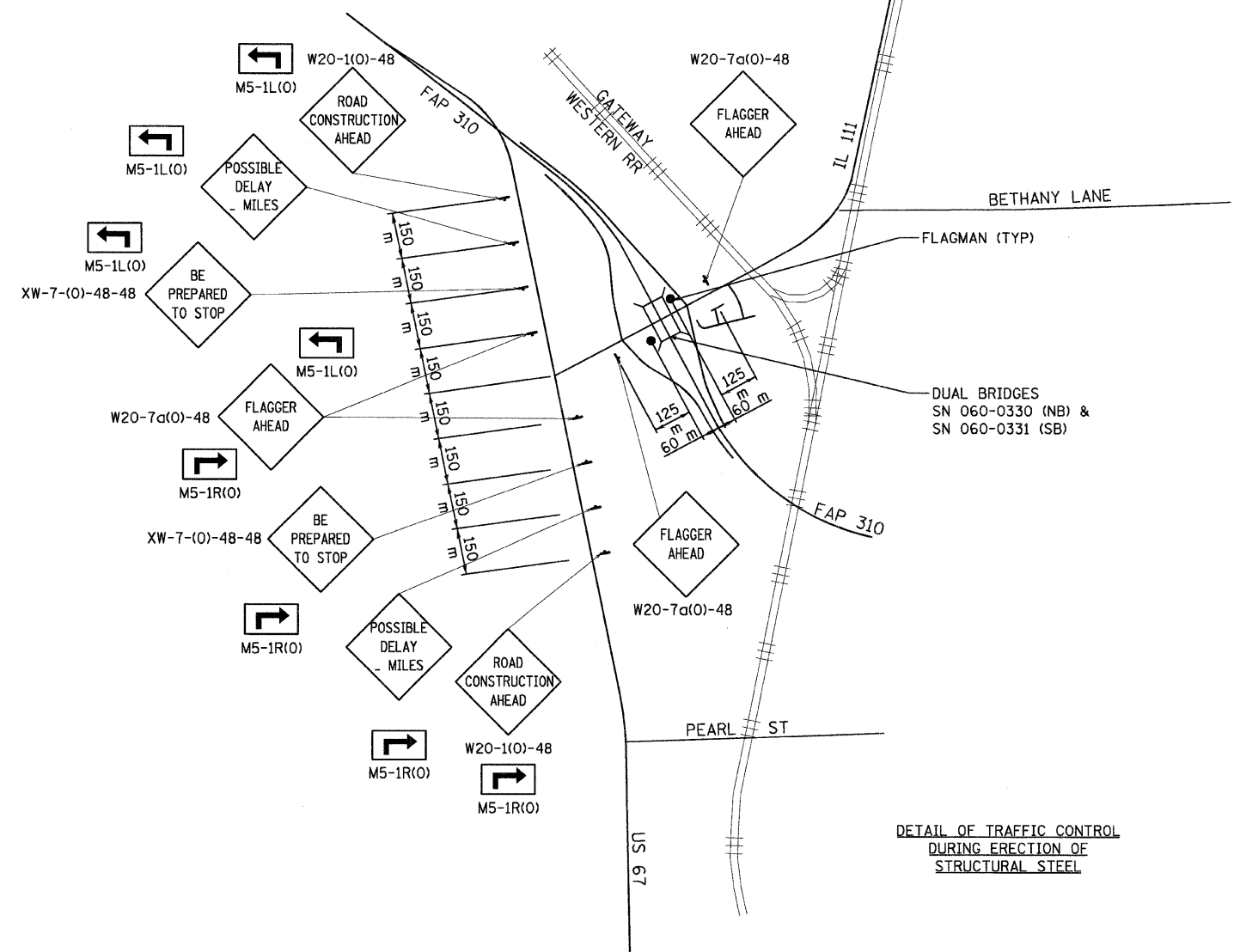
STAGE CONSTRUCTION SEQUENCE

THE FOLLOWING STAGE CONSTRUCTION SEQUENCE IS FOR INFORMATION ONLY. THE CONTRACTOR IS RESPONSIBLE FOR PLANNING AND EXECUTING THIS PROJECT WHICH SHALL BE SUBJECT TO THE APPROVAL OF THE ENGINEER.

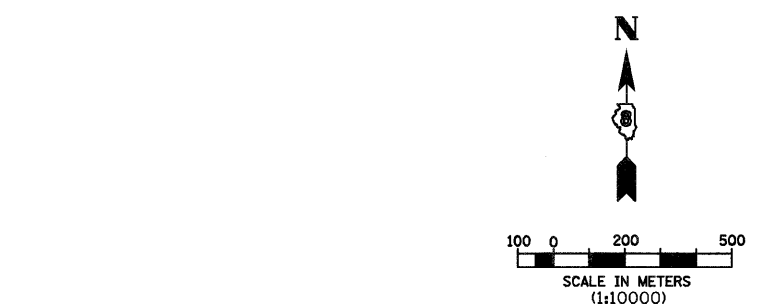
STAGE CONSTRUCTION OF IL 111

STAGE 1

CONSTRUCT THE CULVERT AT FAP 310 STATION 39+838. GRADE THE PROPOSED SPECIAL DITCHES UPSTREAM AND DOWNSTREAM OF THIS CULVERT TO PROVIDE DRAINAGE. CONSTRUCT SN 060-0330 AND SN 060-0331 EMBANKMENT CONES. CONSTRUCT SN 060-0330 AND SN 060-0331. UTILIZE THE DETAIL OF TRAFFIC CONTROL DURING THE ERECTION OF STRUCTURAL STEEL SHOWN ON THIS SHEET AND THE JOB SPECIFIC SPECIAL PROVISION.



DETAIL OF TRAFFIC CONTROL DURING ERECTION OF STRUCTURAL STEEL



REVISIONS	
NAME	DATE

ILLINOIS DEPARTMENT OF TRANSPORTATION
TRAFFIC CONTROL PLAN
FAP 310 (IL 255)
SECTION 60-15-2 & 60-15HB-2
MADISON COUNTY
 DRAWN BY CES
 CHECKED BY
 DATE

12/7/2007

p:\2007\1es\000024\di1111\detail\misc\stage-construction.dgn