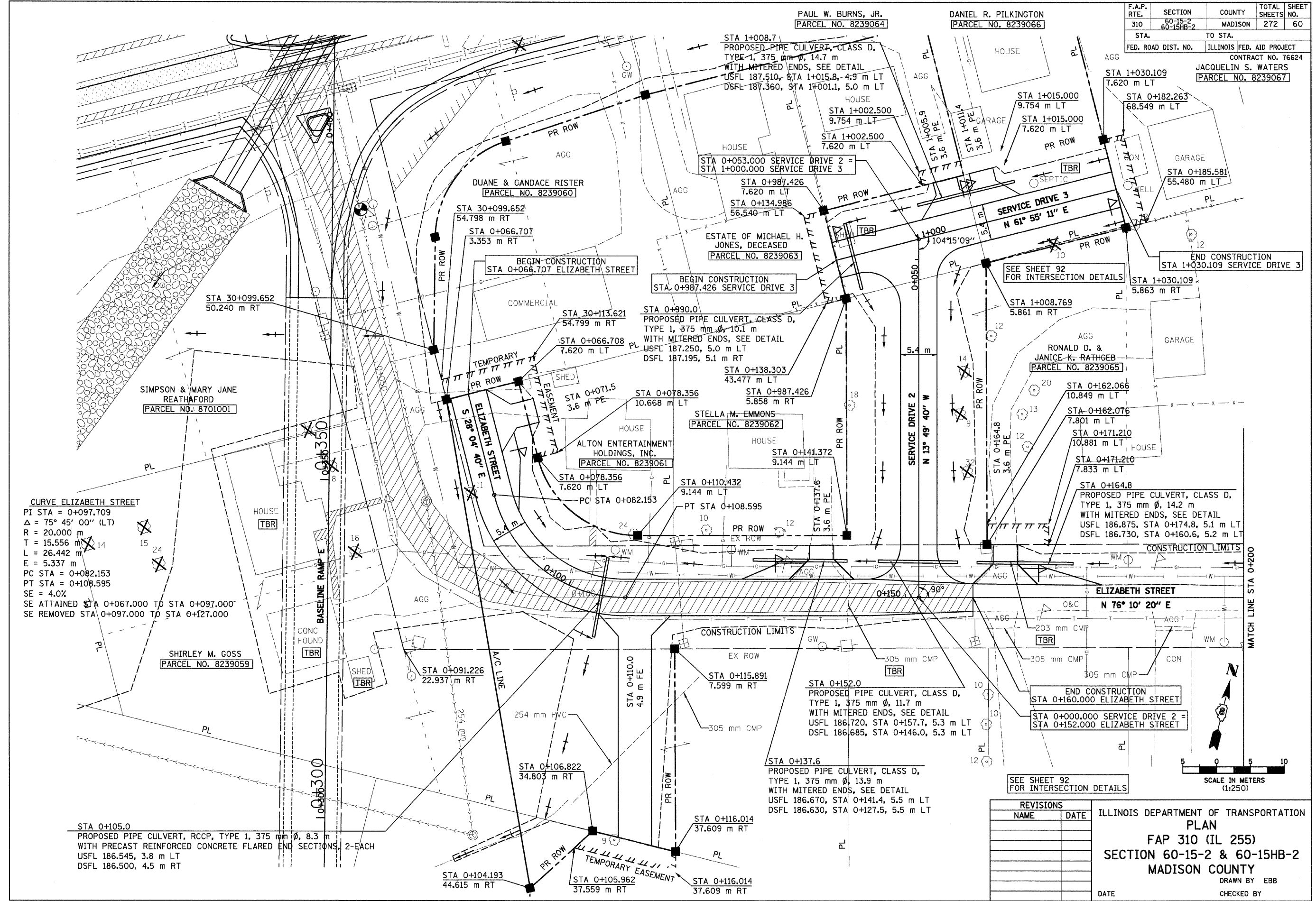


| F.A.P. RTE. | SECTION              | COUNTY  | TOTAL SHEETS | SHEET NO. |
|-------------|----------------------|---------|--------------|-----------|
| 310         | 60-15-2<br>60-15HB-2 | MADISON | 272          | 60        |

STA. TO STA.  
FED. ROAD DIST. NO. ILLINOIS FED. AID PROJECT  
CONTRACT NO. 76624  
JACQUELIN S. WATERS  
[PARCEL NO. 8239067]



**CURVE ELIZABETH STREET**  
 PI STA = 0+097.709  
 $\Delta = 75^\circ 45' 00''$  (LT)  
 R = 20,000 m  
 T = 15.556 m  
 L = 26.442 m  
 E = 5.337 m  
 PC STA = 0+082.153  
 PT STA = 0+108.595  
 SE = 4.0%  
 SE ATTAINED STA 0+067.000 TO STA 0+097.000  
 SE REMOVED STA 0+097.000 TO STA 0+127.000

STA 0+105.0  
 PROPOSED PIPE CULVERT, RCCP, TYPE 1, 375 mm Ø, 8.3 m  
 WITH PRECAST REINFORCED CONCRETE FLARED END SECTIONS, 2-EACH  
 USFL 186.545, 3.8 m LT  
 DSFL 186.500, 4.5 m RT

| REVISIONS |      |
|-----------|------|
| NAME      | DATE |
|           |      |
|           |      |
|           |      |
|           |      |

ILLINOIS DEPARTMENT OF TRANSPORTATION  
**PLAN**  
**FAP 310 (IL 255)**  
**SECTION 60-15-2 & 60-15HB-2**  
**MADISON COUNTY**  
 DRAWN BY EBB  
 CHECKED BY  
 DATE

ELIZABETH STREET, SERVICE DRIVE 2, & SERVICE DRIVE 3

12/17/2007

p:\06files\000024\d1111\PlanProfiles\plan015c06.dgn