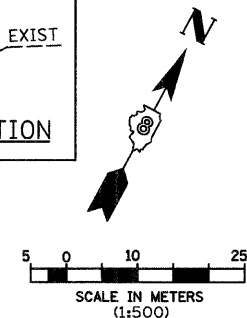
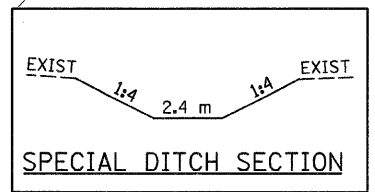
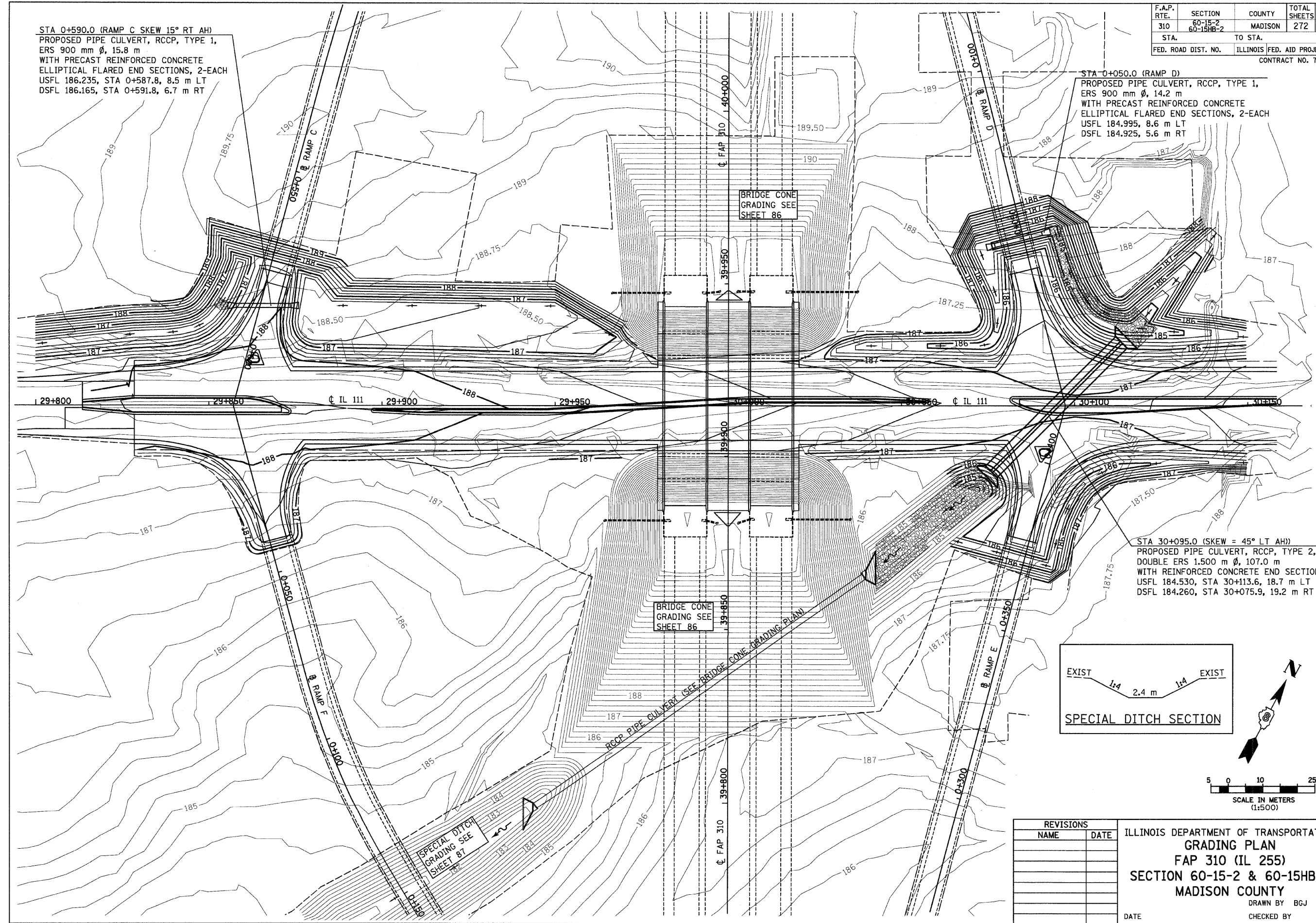


F.A.P. RTE.	SECTION	COUNTY	TOTAL SHEETS	SHEET NO.
310	60-15-2 60-15HB-2	MADISON	272	88
STA.		TO STA.		
FED. ROAD DIST. NO.		ILLINOIS FED. AID PROJECT		
CONTRACT NO. 76624				

STA 0+590.0 (RAMP C SKEW 15° RT AH)
 PROPOSED PIPE CULVERT, RCCP, TYPE 1,
 ERS 900 mm ϕ , 15.8 m
 WITH PRECAST REINFORCED CONCRETE
 ELLIPTICAL FLARED END SECTIONS, 2-EACH
 USFL 186.235, STA 0+587.8, 8.5 m LT
 DSFL 186.165, STA 0+591.8, 6.7 m RT

STA 0+050.0 (RAMP D)
 PROPOSED PIPE CULVERT, RCCP, TYPE 1,
 ERS 900 mm ϕ , 14.2 m
 WITH PRECAST REINFORCED CONCRETE
 ELLIPTICAL FLARED END SECTIONS, 2-EACH
 USFL 184.995, 8.6 m LT
 DSFL 184.925, 5.6 m RT

STA 30+095.0 (SKEW = 45° LT AH)
 PROPOSED PIPE CULVERT, RCCP, TYPE 2,
 DOUBLE ERS 1.500 m ϕ , 107.0 m
 WITH REINFORCED CONCRETE END SECTIONS
 USFL 184.530, STA 30+113.6, 18.7 m LT
 DSFL 184.260, STA 30+075.9, 19.2 m RT



REVISIONS	
NAME	DATE

ILLINOIS DEPARTMENT OF TRANSPORTATION
 GRADING PLAN
 FAP 310 (IL 255)
 SECTION 60-15-2 & 60-15HB-2
 MADISON COUNTY
 DRAWN BY BGY
 CHECKED BY
 DATE

12/7/2007

p:\2007\1es\000024\d\1111\detailed\misc\gradingplan-1111.dgn