

SECTION 60-15  
BY OTHERS

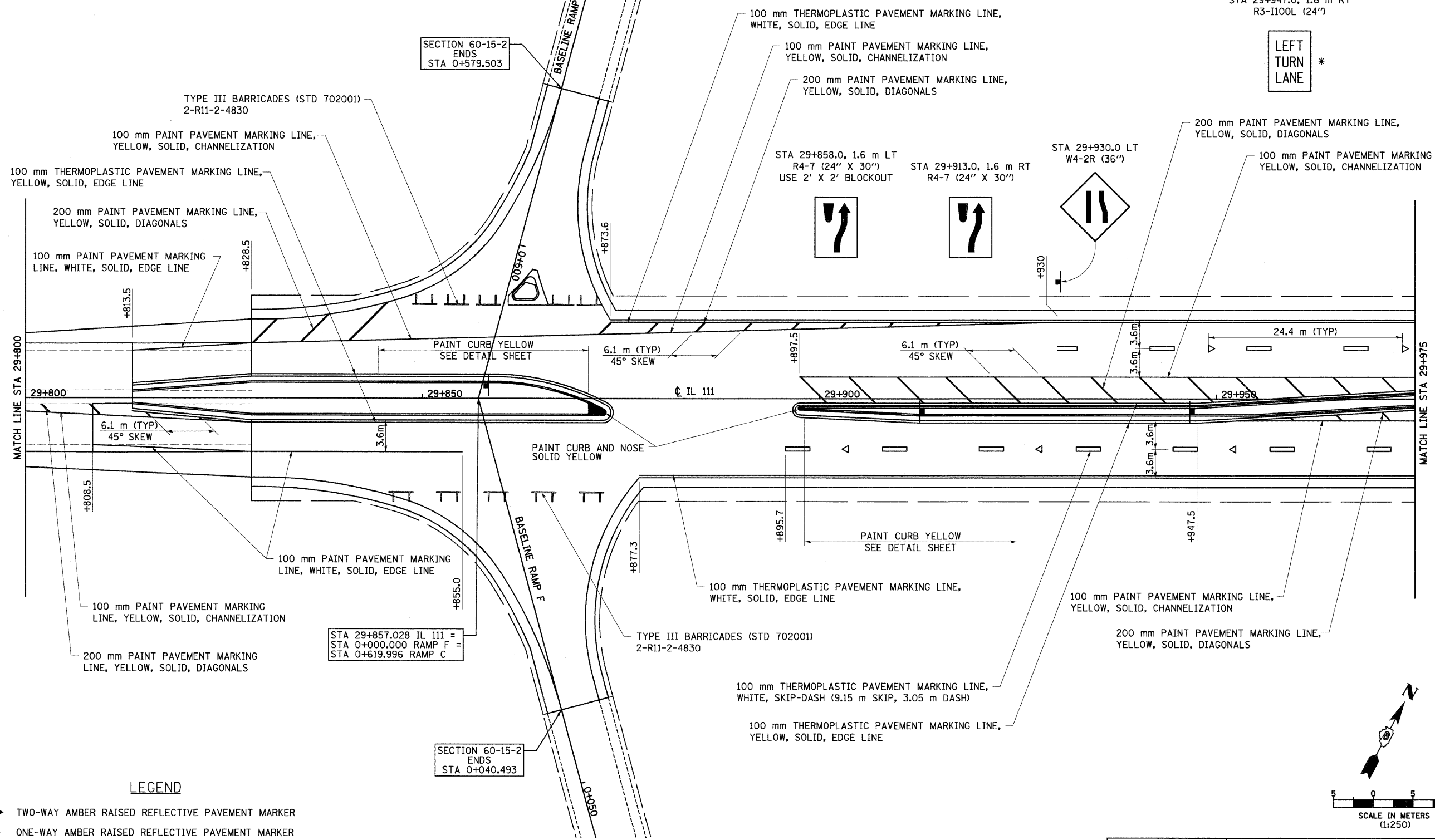
F.A.P. RTE.	SECTION	COUNTY	TOTAL SHEETS	SHEET NO.
310	60-15-2 60-15HB-2	MADISON	272	94
STA.	TO STA.			
FED. ROAD DIST. NO.	ILLINOIS FED. AID PROJECT			
CONTRACT NO. 76624				

ADDITIONAL PERMANENT PAVEMENT STRIPING  
WILL BE DONE DURING CONTRACT 60-15

PRISMATIC REFLECTORS ON CURBS WILL BE INCLUDED IN THIS CONTRACT.  
SEE SHEET 152 FOR THE PLACEMENT OF THE REFLECTORS.

STA 29+947.0, 1.6 m RT  
R3-1100L (24')

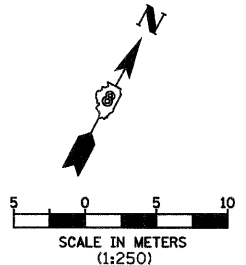
LEFT  
TURN  
LANE \*



- LEGEND**
- ◆ TWO-WAY AMBER RAISED REFLECTIVE PAVEMENT MARKER
  - ▶ ONE-WAY AMBER RAISED REFLECTIVE PAVEMENT MARKER
  - ▷ ONE-WAY CRYSTAL RAISED REFLECTIVE PAVEMENT MARKER
  - ⊥ DELINEATORS - TWO SINGLE WHITE REFLECTOR UNITS
  - ├ DELINEATORS - ONE SINGLE WHITE REFLECTOR UNIT
  - \* SIGN SHALL BE COVERED UNTIL LEFT TURN LANE IS OPEN

REVISIONS	
NAME	DATE

ILLINOIS DEPARTMENT OF TRANSPORTATION  
PAVEMENT MARKING & SIGNING  
FAP 310 (IL 255)  
SECTION 60-15-2 & 60-15HB-2  
MADISON COUNTY  
DRAWN BY EBB  
CHECKED BY  
DATE



SECTION 60-15  
BY OTHERS

12/7/2007

p:\00f\iles\000024\dll\111\pvm\marks\pvm\015c01.dgn