

F.A.P. RTE.	SECTION	COUNTY	TOTAL SHEETS	SHEET NO.
310	60-15-2 60-15HB-2	MADISON	272	96
STA.		TO STA.		
FED. ROAD DIST. NO.		ILLINOIS FED. AID PROJECT		

CONTRACT NO. 76624

ADDITIONAL PERMANENT PAVEMENT STRIPING WILL BE DONE DURING CONTRACT 60-15

PRISMATIC REFLECTORS ON CURBS WILL BE INCLUDED IN THIS CONTRACT. SEE SHEET 152 FOR THE PLACEMENT OF THE REFLECTORS.

SEE SHEET 91 FOR FLUSH MEDIAN DETAILS

STA 30+211.0, 1.6 m LT
R4-7 (24" X 30")



SECTION 60-16 BY OTHERS

END CONSTRUCTION STA 0+026.511 ACCESS ROAD

100 mm THERMOPLASTIC PAVEMENT MARKING LINE, WHITE, SOLID, EDGE LINE

100 mm THERMOPLASTIC PAVEMENT MARKING LINE, WHITE, SOLID, TURN LANE

THERMOPLASTIC PAVEMENT MARKING, WHITE, LEFT TURN ARROW

300 mm THERMOPLASTIC PAVEMENT MARKING LINE, YELLOW, SOLID, DIAGONALS

100 mm THERMOPLASTIC PAVEMENT MARKING LINE, YELLOW, DOUBLE, SOLID, CHANNELIZATION

THERMOPLASTIC PAVEMENT MARKING, WHITE, RAILROAD CROSSING

TYPE III BARRICADES (STD 702001) 2-R11-2-4830

STA 30+246.919 IL 111 = STA 1+000.000 SERVICE DRIVE 1 = STA 0+000.000 ACCESS ROAD

PAINT CURB YELLOW SEE DETAIL SHEET

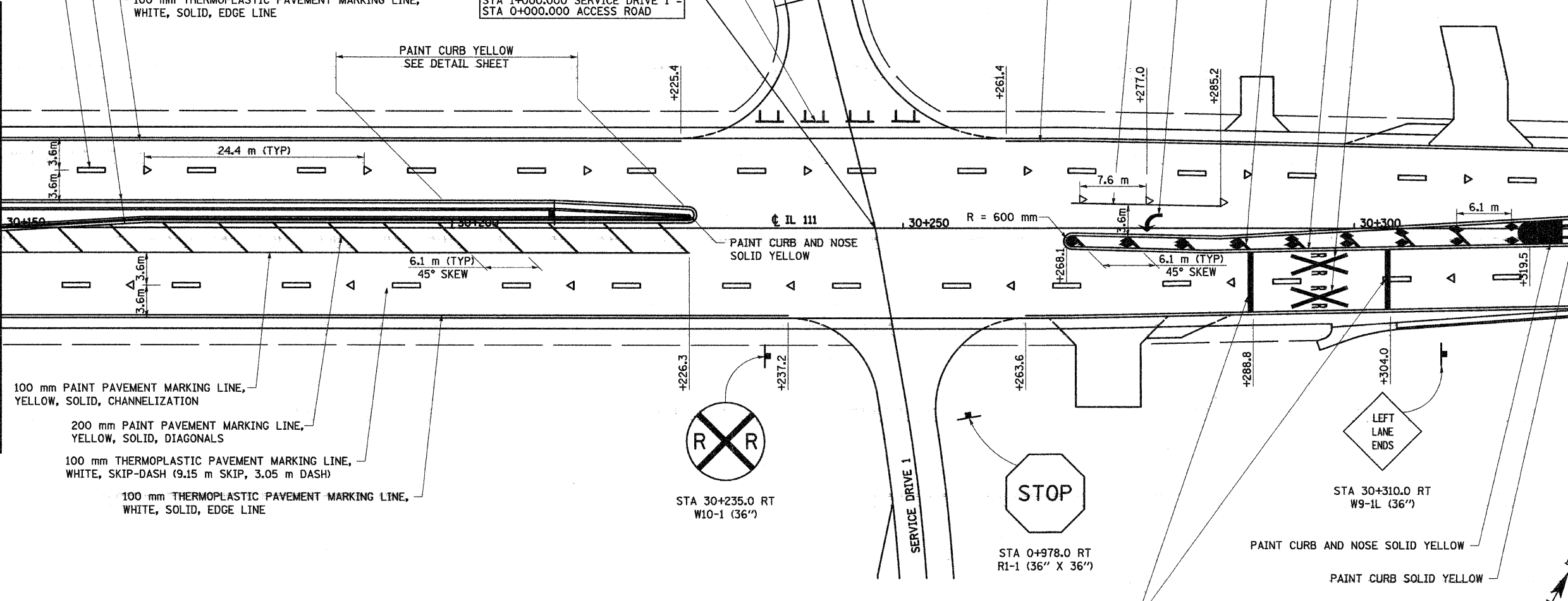
100 mm THERMOPLASTIC PAVEMENT MARKING LINE, WHITE, SKIP-DASH (9.15 m SKIP, 3.05 m DASH)

100 mm THERMOPLASTIC PAVEMENT MARKING LINE, YELLOW, SOLID, EDGE LINE

100 mm THERMOPLASTIC PAVEMENT MARKING LINE, WHITE, SOLID, EDGE LINE

MATCH LINE STA 30+150

MATCH LINE STA 30+325



100 mm PAINT PAVEMENT MARKING LINE, YELLOW, SOLID, CHANNELIZATION

200 mm PAINT PAVEMENT MARKING LINE, YELLOW, SOLID, DIAGONALS

100 mm THERMOPLASTIC PAVEMENT MARKING LINE, WHITE, SKIP-DASH (9.15 m SKIP, 3.05 m DASH)

100 mm THERMOPLASTIC PAVEMENT MARKING LINE, WHITE, SOLID, EDGE LINE

STA 30+235.0 RT
W10-1 (36")

STOP

STA 0+978.0 RT
R1-1 (36" X 36")

STA 30+310.0 RT
W9-1L (36")

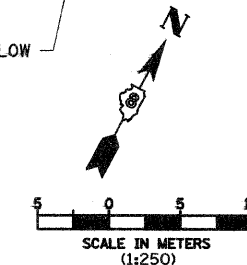
PAINT CURB AND NOSE SOLID YELLOW

PAINT CURB SOLID YELLOW

600 mm THERMOPLASTIC PAVEMENT MARKING LINE, WHITE, SOLID

LEGEND

- ◆ TWO-WAY AMBER RAISED REFLECTIVE PAVEMENT MARKER
- ▶ ONE-WAY AMBER RAISED REFLECTIVE PAVEMENT MARKER
- ▷ ONE-WAY CRYSTAL RAISED REFLECTIVE PAVEMENT MARKER
- † DELINEATORS - TWO SINGLE WHITE REFLECTOR UNITS
- ┌ DELINEATORS - ONE SINGLE WHITE REFLECTOR UNIT



REVISIONS	
NAME	DATE

ILLINOIS DEPARTMENT OF TRANSPORTATION
PAVEMENT MARKING & SIGNING
FAP 310 (IL 255)
SECTION 60-15-2 & 60-15HB-2
MADISON COUNTY
DRAWN BY EBB
CHECKED BY
DATE

5/13/2008

p:\00f\iles\000024\dll\111\pvm\MarKs\pvm\015c03.dgn