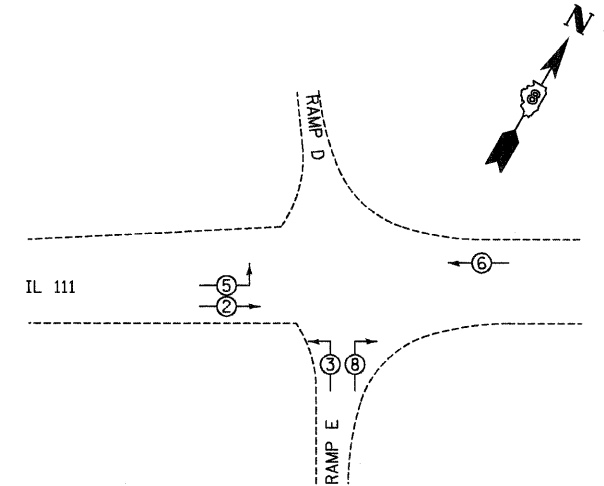


F.A.P. RTE.	SECTION	COUNTY	TOTAL SHEETS	SHEET NO.
310	60-15-2 60-15HB-2	MADISON	272	101
STA.	TO STA.			
FED. ROAD DIST. NO.	ILLINOIS FED. AID PROJECT			
CONTRACT NO. 76624				

CABLE DIAGRAM LEGEND

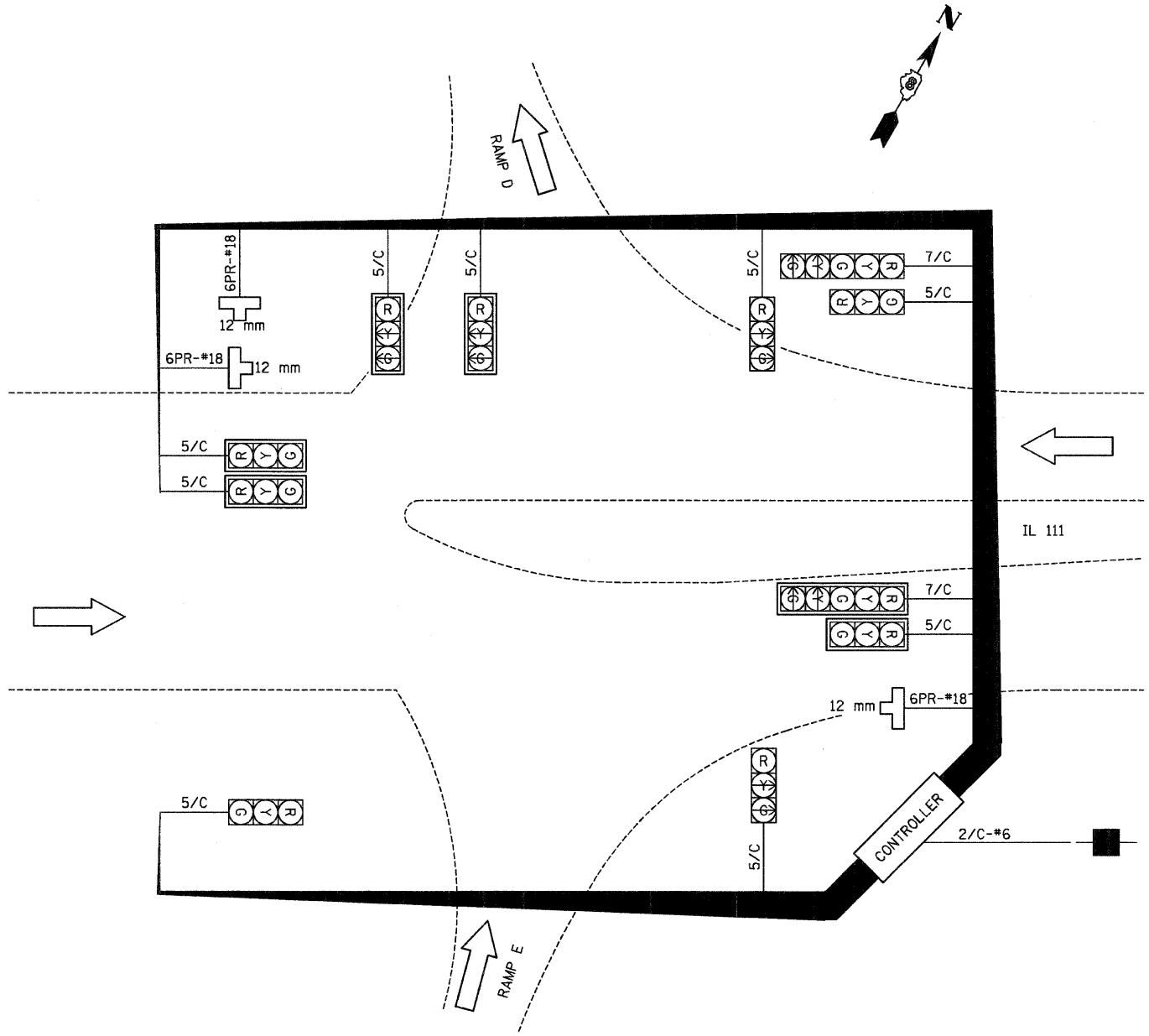
- ELECTRIC CABLE IN CONDUIT
- 5/C INDICATES NUMBER OF CONDUCTORS IN CABLE
- SERVICE INSTALLATION
- #6 INDICATES AMERICAN WIRE GAUGE (AWG) SIZE 6 CONDUCTORS (SEE GENERAL NOTES)
- (B) LUMINARE
- VIDEO CAMERA



PHASE DESIGNATION DIAGRAM

FULL-ACTUATED CONTROLLER SEQUENCE
8 PHASES, IN TYPE IV CABINET

PROPOSED SEQUENCE OF OPERATION								
PHASE	1	2	3	4	5	6	7	8
MOVEMENT	—	→	↗	—	↖	←	—	↙
CONCURRENT MOVEMENT PERMITTED	NOT USED	5 OR 6	8	NOT USED	2	2	NOT USED	3



CABLES ARE #14 UNLESS OTHERWISE NOTED.

LUMINARE LEGEND

- A. LUMINARE, SODIUM VAPOR, MULTI-MOUNT 250 WATT, 2 EACH MOUNTED ON 2-WAY BULLHORN, POST TOP MOUNT
- B. LUMINARE, SODIUM VAPOR, MULTI-MOUNT 250 WATT, 2 EACH MOUNTED ON 2-WAY BULLHORN, POST TOP MOUNT

REVISIONS	
NAME	DATE

ILLINOIS DEPARTMENT OF TRANSPORTATION
CABLE DIAGRAM
FAP 310 (IL 255)
SECTION 60-15-2 & 60-15HB-2
MADISON COUNTY
DRAWN BY
CHECKED BY
DATE

IL 111 AND RAMPS E & D INTERSECTION

12/7/2007

p:\00f\iles\200024\d\IL111\signals\s\g02fg015c.dgn