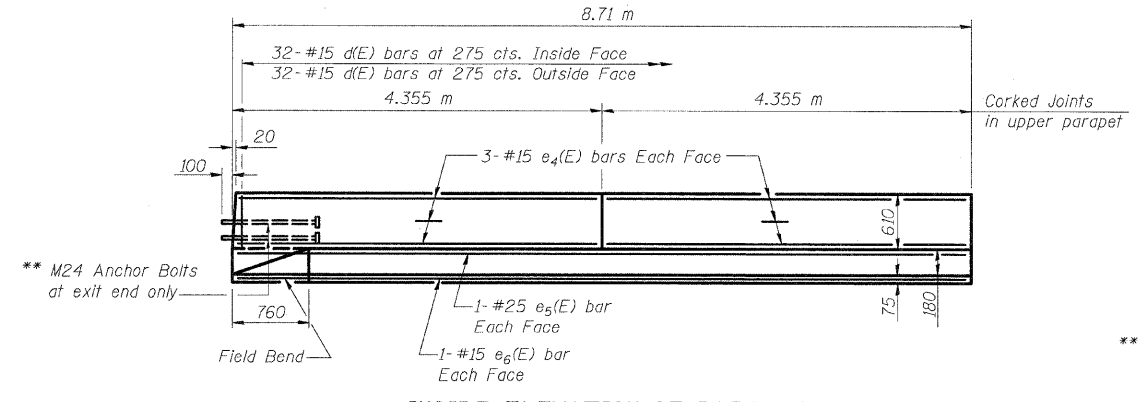


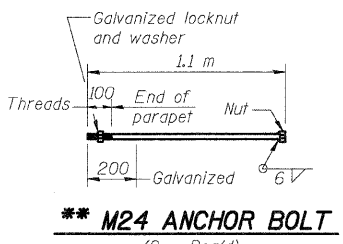
12/17/2007 1:39:29 PM

pa:\001\ees\000024\bridge-plans\060-0333\app\slab.dgn

ROUTE NO.	SECTION	COUNTY	SHEET NO.	SHEET NO.
F.A.P. 310	*	MADISON	272	110
FED. ROAD DIST. NO. 7		ILLINOIS	CONTRACT NO. 76624	

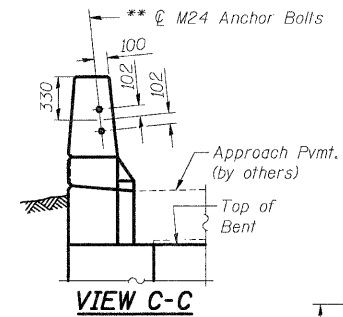


**INSIDE ELEVATION OF PARAPET**

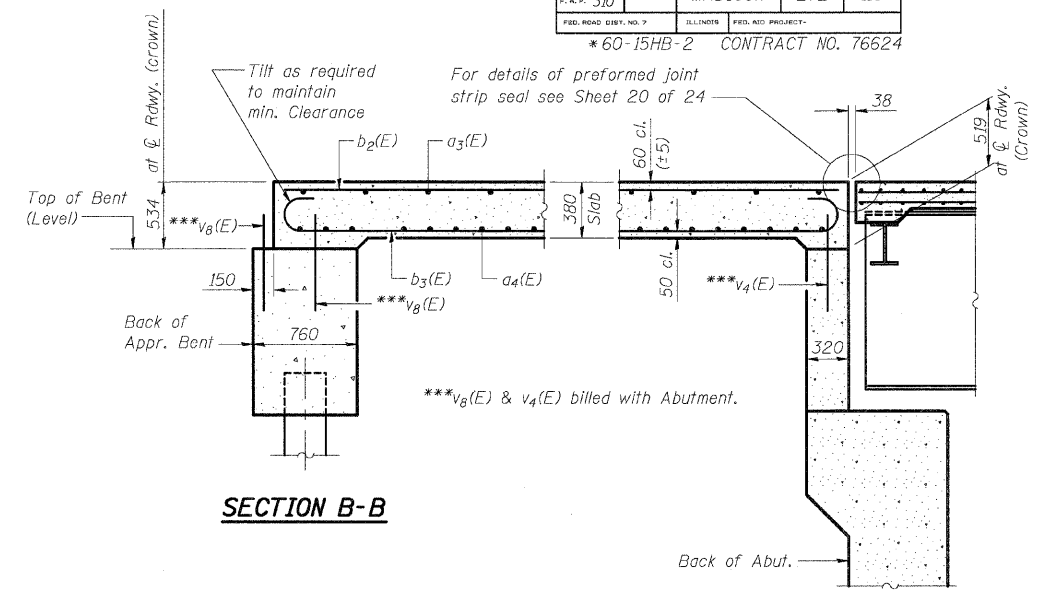


**M24 ANCHOR BOLT**  
(2 - Req'd)  
Cost included with Concrete Superstructure.

\*\* M24 Anchor bolts at East side of N.B. Structure only.

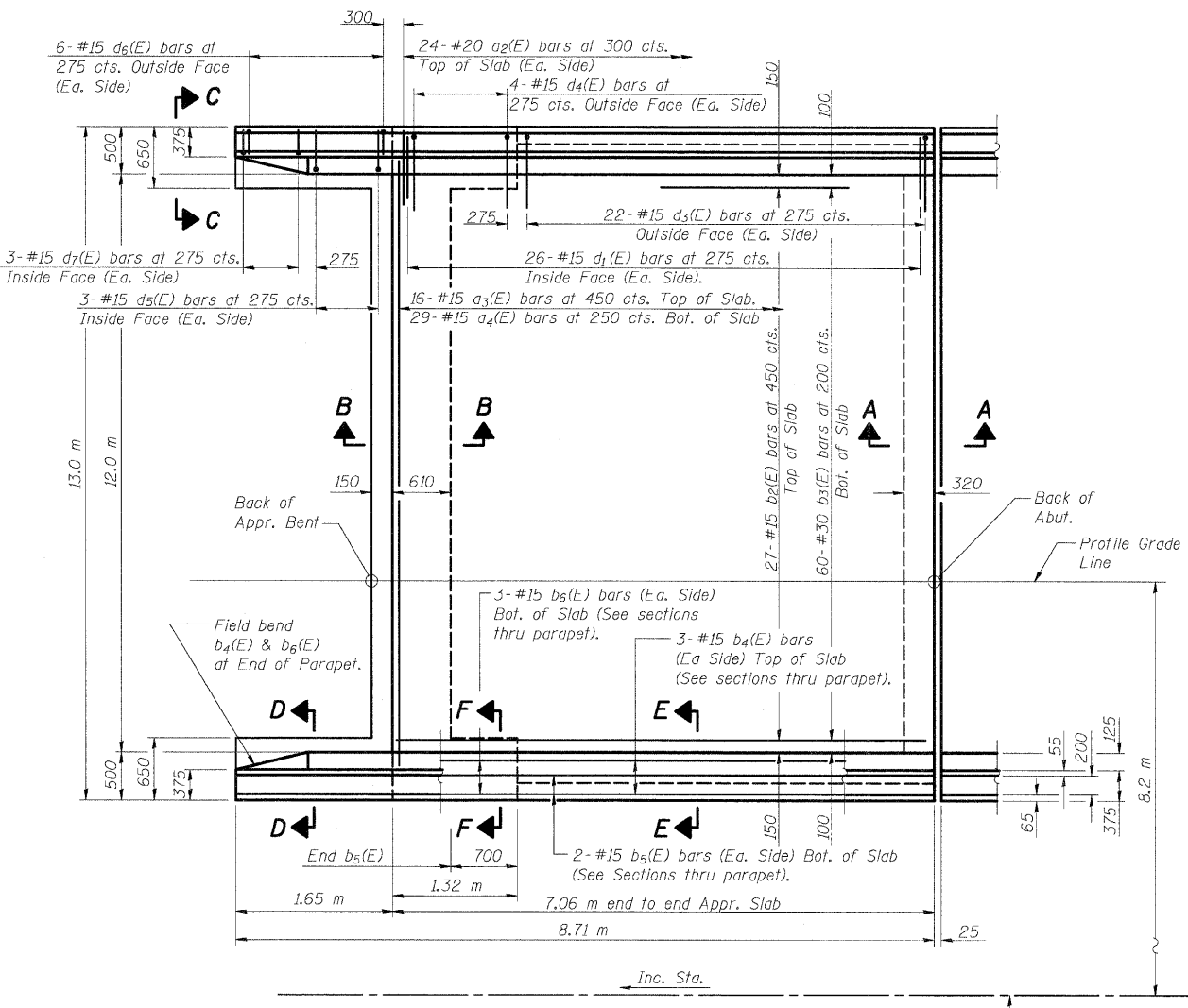


**VIEW C-C**



**SECTION B-B**

**SECTION A-A**

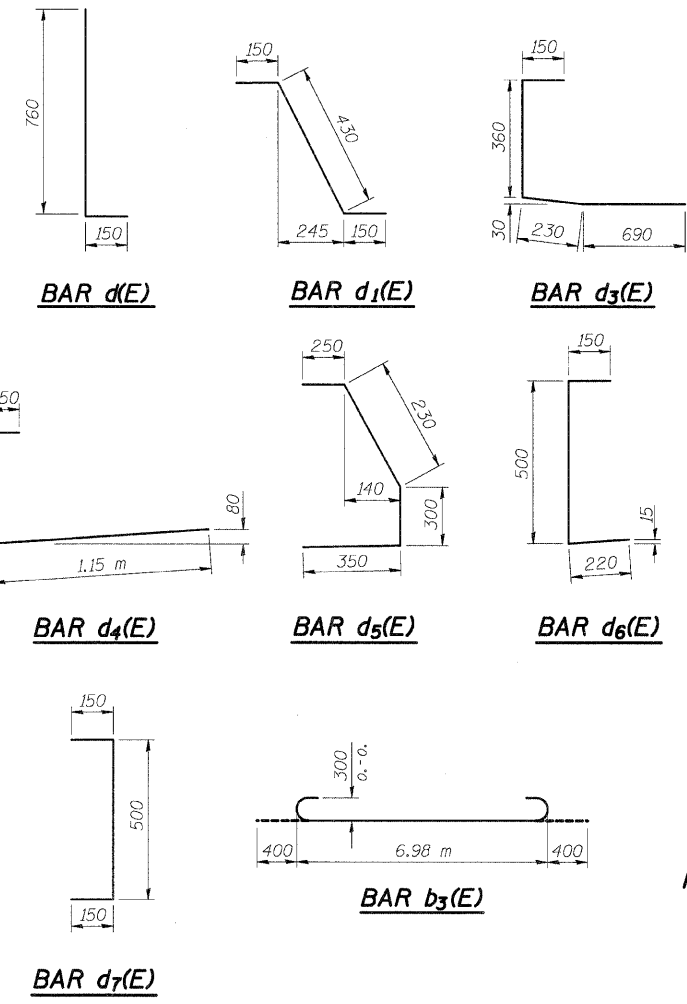


**PLAN**

(N.B. Structure shown, S.B. Structure the same, but opposite hand)

Notes:  
See sheet 10 of 24 for parapet joint detail.  
Work this sheet with sheet 10 of 24.

DESIGNED	ADL
CHECKED	WLW
DRAWN	ADL/DGM
CHECKED	WLW



**NORTH APPROACH SLABS**  
**BILL OF MATERIALS**  
(Two Bridges)

Bar	No.	Size (#)	Length (m)	Shape
a2(E)	96	#20	1.20	—
a3(E)	32	#15	12.36	—
a4(E)	58	#15	11.90	—
b2(E)	54	#15	6.98	—
b3(E)	120	#30	7.78	—
b4(E)	12	#15	8.63	—
b5(E)	8	#15	6.40	—
b6(E)	12	#15	2.89	—
d(E)	256	#15	0.91	—
d1(E)	104	#15	0.73	—
d3(E)	88	#15	1.43	—
d4(E)	16	#15	1.80	—
d5(E)	12	#15	1.13	—
d6(E)	24	#15	0.87	—
d7(E)	12	#15	0.80	—
e4(E)	48	#15	4.27	—
e5(E)	8	#25	8.63	—
e6(E)	8	#15	8.63	—
Reinforcement Bars, Epoxy Coated		kg	9490	
Concrete Superstructure		m <sup>3</sup>	82.4	
Bridge Deck Grooving		m <sup>2</sup>	168	
Protective Coat		m <sup>2</sup>	209	
Form Liner		m <sup>2</sup>	7	
Textured Surface				

**NORTH APPROACH SLABS (1 OF 2)**  
**FAP RTE. 310 (IL RTE. 255) OVER**  
**IL RTE 111**  
**SECTION 60-15HB-2**  
**MADISON COUNTY**  
**STATION 39+914.647**  
**SN 060-0330 (NB) & 060-0331 (SB)**

Klingner & Assoc., P.C.