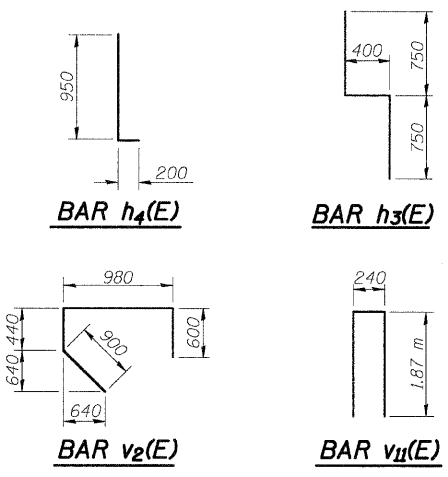


12/17/2007 1:44:08 PM

ps:\001\ies\002022\adl\111\bridge-plans\060-0330\abutment.dgn

Notes:
Space reinforcement in cap to miss anchor bolts.
Work this sheet with sheet 17 of 24.
Four steps monolithically with cap.

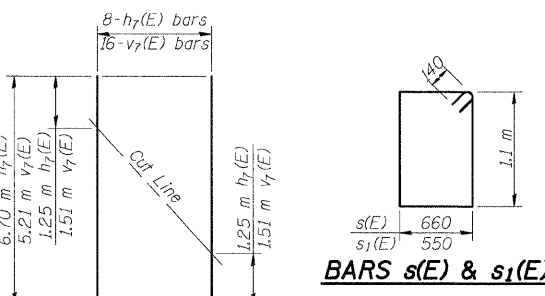


APPR. BENT-PILE DATA
(For Two North Bents)

Type & Size: Metal Shell - 356 mm dia. x 6.35 mm walls
Nominal Required Bearing: 900 KN
Allowable Resistance Available: 300 KN
N.B.S. Est. Length: 16.0 m
N.B.S. No. Req'd.: 10
S.B.S. Est. Length: 14.5 m
S.B.S. No. Req'd.: 10

ABUT.-PILE DATA
(For Two North Abutments)

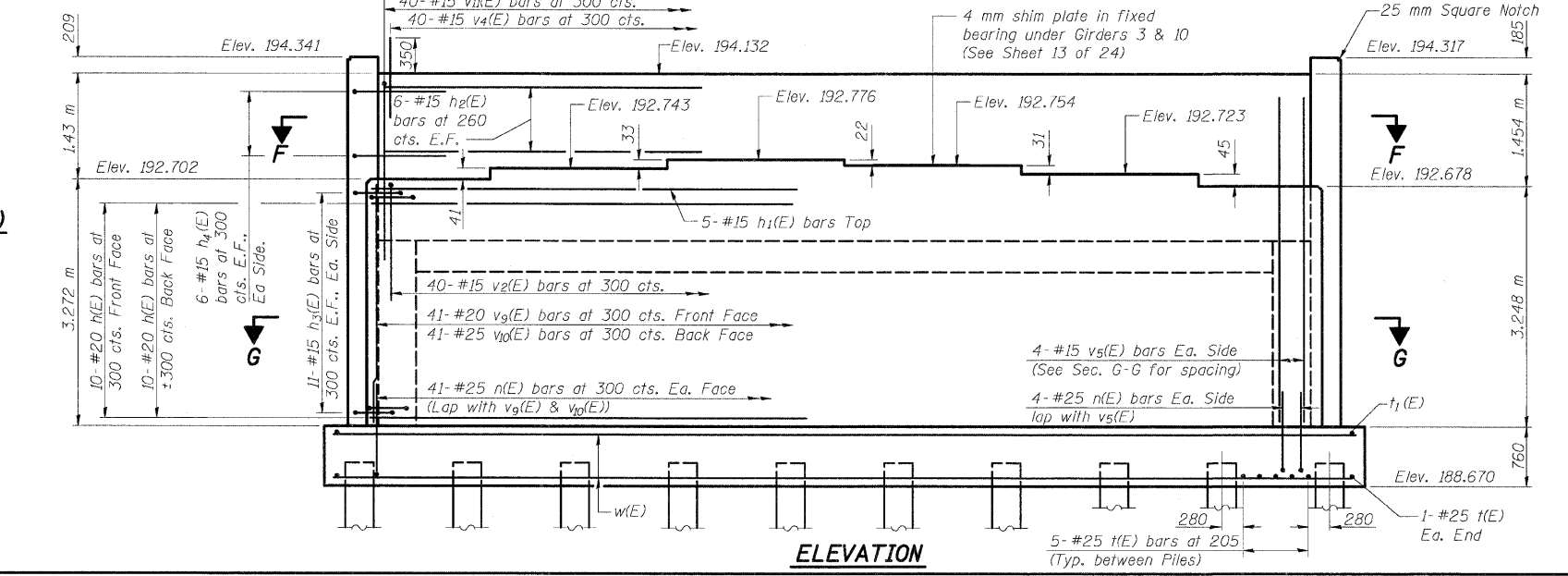
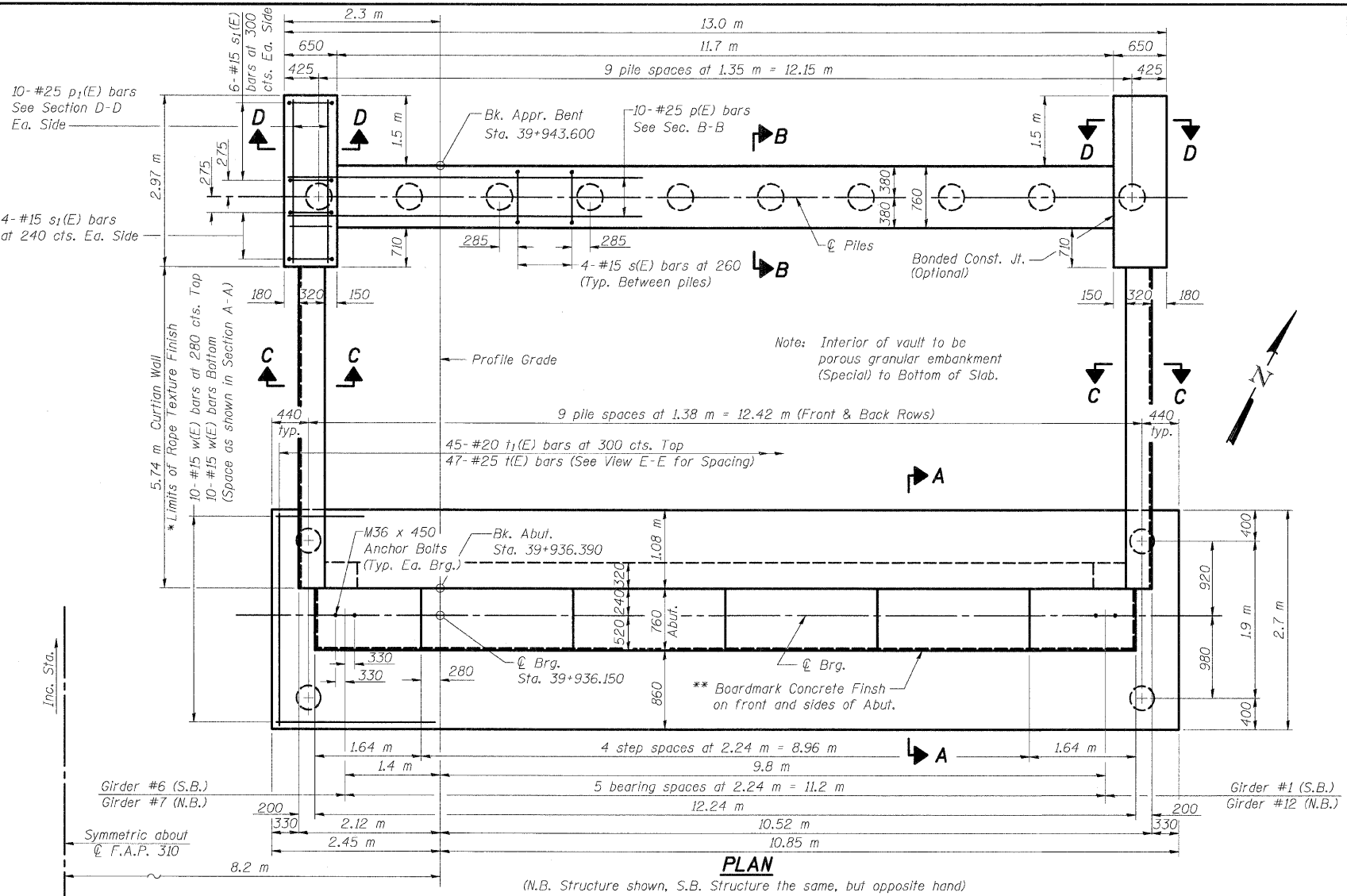
Type & Size: Metal Shell - 356 mm dia. x 6.35 mm walls
Nominal Required Bearing: 1500 KN
Allowable Resistance Available: 500 KN
N.B.S. Est. Length: 17.5 m
N.B.S. No. Req'd.: 19 plus 1 Test Pile
S.B.S. Est. Length: 16.0 m
S.B.S. No. Req'd.: 20



FIELD CUTTING DIAGRAM

Order $h_7(E)$ & $v_7(E)$ bars full length.
Cut to fit as shown and use remainder of bars in opposite face of wall.

DESIGNED	ADL
CHECKED	WLW
DRAWN	ADL/DGM
CHECKED	WLW



ROUTE NO.	SECTION	COUNTY	TOTAL SHEETS	*SHEET	SHEET NO.
S.B.I.		MADISON	272	117	16
F.A.P. 310	*				24 SHEETS
FED. ROAD DIST. NO. 7	ILLINOIS	FED. AID PROJECT			
		* 60-15HB-2	CONTRACT NO. 76624		

BILL OF MATERIAL FOR TWO NORTH ABUTMENTS

Bar	No.	Size	Length (m)	Shape
$h_1(E)$	40	#20	12.16	—
$h_2(E)$	10	#15	12.16	—
$h_3(E)$	24	#15	12.56	—
$h_4(E)$	88	#15	1.90	—
$h_5(E)$	48	#15	1.15	—
$h_6(E)$	8	#20	6.30	—
$h_7(E)$	32	#15	1.00	—
$h_8(E)$	32	#15	6.70	—
$h_9(E)$	40	#15	5.66	—
$h_{10}(E)$	40	#15	1.40	—
$n(E)$	212	#25	2.33	—
$p(E)$	20	#25	12.90	—
$p_1(E)$	40	#25	2.87	—
$s(E)$	72	#15	3.80	—
$s_1(E)$	40	#15	3.58	—
$t(E)$	94	#25	2.60	—
$t_1(E)$	90	#20	2.60	—
$v_2(E)$	80	#15	2.92	—
$v_4(E)$	80	#15	1.00	—
$v_5(E)$	16	#15	3.80	—
$v_6(E)$	32	#15	4.95	—
$v_7(E)$	64	#15	5.21	—
$v_8(E)$	268	#15	1.00	—
$v_9(E)$	82	#20	3.17	—
$v_{10}(E)$	82	#25	3.17	—
$v_{11}(E)$	80	#15	3.98	—
$w(E)$	40	#15	13.20	—
Concrete Structures		m^3	186.4	
Reinforcement Bars, Epoxy Coated		kg	13,420	
Test Piles metal shells		Each	1	
*** Structure Excavation		m^3	332	
Furnishing Metal Shell Piles 356 mm x 6.35mm		m	957.5	
Driving Piles		m	957.5	
Concrete Sealer		m^2	134	
Porous Granular Embankment (Special)		m^3	343	
Form Liner		m^2	159	
Texture Surface		m^2	159	

* Patterned Rope Texture Concrete (See Sheet 19 of 24 for Details) (See Special Provisions)
** Random Width Boardmark Concrete (See Sheet 19 of 24 for details)
*** Structure Excavation is 166 m^3 per Abutment

NORTH ABUTMENTS (1 OF 2)
FAP RTE. 310 (IL RTE. 255) OVER
IL RTE 111
SECTION 60-15HB-2
MADISON COUNTY
STATION 39+914.647
SN 060-0330 (NB) & 060-0331 (SB)

Klingner & Assoc., P.C.