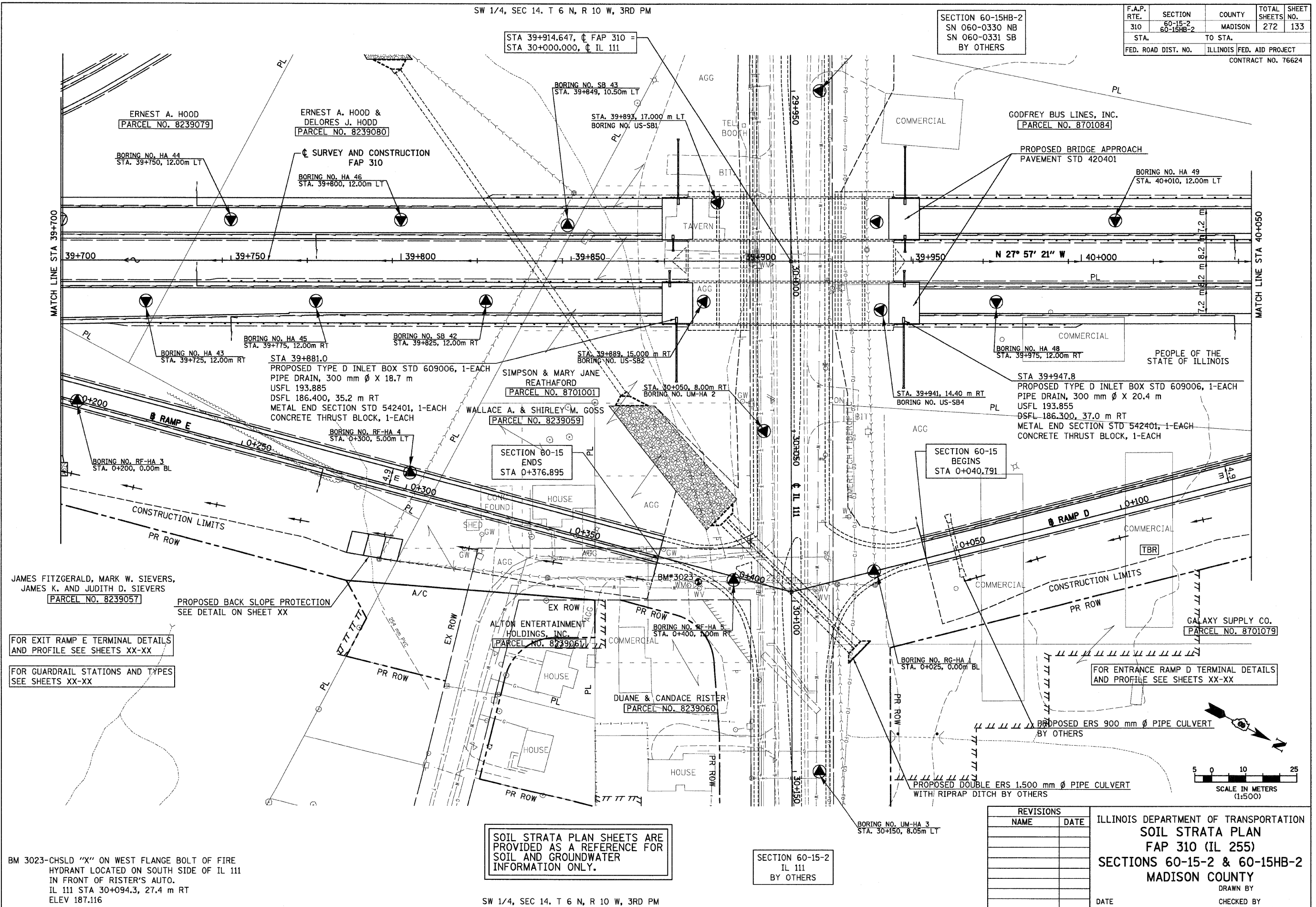


SW 1/4, SEC 14, T 6 N, R 10 W, 3RD PM

SECTION 60-15HB-2
SN 060-0330 NB
SN 060-0331 SB
BY OTHERS

F.A.P. RTE.	SECTION	COUNTY	TOTAL SHEETS	SHEET NO.
310	60-15-2 60-15HB-2	MADISON	272	133
STA.		TO STA.		
FED. ROAD DIST. NO.		ILLINOIS FED. AID PROJECT		
CONTRACT NO. 76624				



FOR EXIT RAMP E TERMINAL DETAILS AND PROFILE SEE SHEETS XX-XX

FOR GUARDRAIL STATIONS AND TYPES SEE SHEETS XX-XX

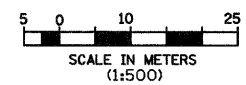
FOR ENTRANCE RAMP D TERMINAL DETAILS AND PROFILE SEE SHEETS XX-XX

SOIL STRATA PLAN SHEETS ARE PROVIDED AS A REFERENCE FOR SOIL AND GROUNDWATER INFORMATION ONLY.

SECTION 60-15-2
IL 111
BY OTHERS

REVISIONS	
NAME	DATE

ILLINOIS DEPARTMENT OF TRANSPORTATION
SOIL STRATA PLAN
FAP 310 (IL 255)
SECTIONS 60-15-2 & 60-15HB-2
MADISON COUNTY
DRAWN BY
CHECKED BY
DATE



BM 3023-CHSLD "X" ON WEST FLANGE BOLT OF FIRE HYDRANT LOCATED ON SOUTH SIDE OF IL 211 IN FRONT OF RISTER'S AUTO.
IL 111 STA 30+094.3, 27.4 m RT
ELEV 187.116

SW 1/4, SEC 14, T 6 N, R 10 W, 3RD PM

12/7/2007

p:\207files\000024\d1111\soilstrata\plan015a14.dgn