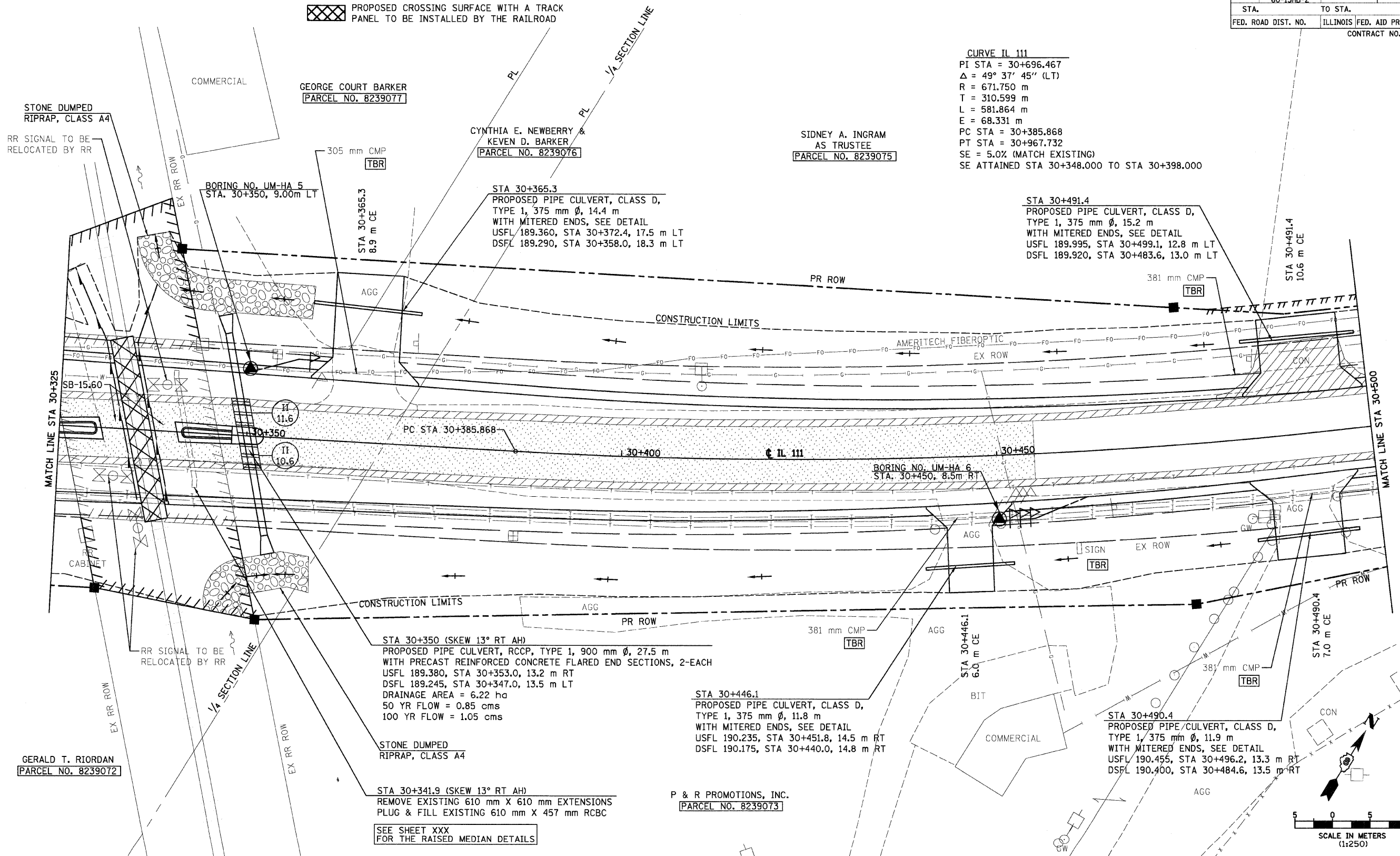


SW 1/4, SEC 14, T 6 N, R 10 W, 3RD PM

SE 1/4, SEC 14, T 6 N, R 10 W, 3RD PM

F.A.P. RTE.	SECTION	COUNTY	TOTAL SHEETS	SHEET NO.
310	60-15-2 60-15HB-2	MADISON	272	141
STA.		TO STA.		
FED. ROAD DIST. NO.		ILLINOIS FED. AID PROJECT		
CONTRACT NO. 76624				

CURVE IL 111
 PI STA = 30+696.467
 $\Delta = 49^\circ 37' 45''$ (LT)
 R = 671.750 m
 T = 310.599 m
 L = 581.864 m
 E = 68.331 m
 PC STA = 30+385.868
 PT STA = 30+967.732
 SE = 5.0% (MATCH EXISTING)
 SE ATTAINED STA 30+348.000 TO STA 30+398.000



STONE DUMPED
RIPRAP, CLASS A4

GEORGE COURT BARKER
[PARCEL NO. 8239077]

CYNTHIA E. NEWBERRY &
KEVEN D. BARKER
[PARCEL NO. 8239076]

SIDNEY A. INGRAM
AS TRUSTEE
[PARCEL NO. 8239075]

MATCH LINE STA 30+325

MATCH LINE STA 30+500

STA 30+350 (SKEW 13° RT AH)
 PROPOSED PIPE CULVERT, RCCP, TYPE 1, 900 mm ϕ , 27.5 m
 WITH PRECAST REINFORCED CONCRETE FLARED END SECTIONS, 2-EACH
 USFL 189.380, STA 30+353.0, 13.2 m RT
 DSFL 189.245, STA 30+347.0, 13.5 m LT
 DRAINAGE AREA = 6.22 ha
 50 YR FLOW = 0.85 cms
 100 YR FLOW = 1.05 cms

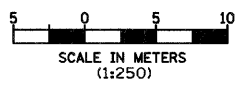
STA 30+446.1
 PROPOSED PIPE CULVERT, CLASS D,
 TYPE 1, 375 mm ϕ , 11.8 m
 WITH MITERED ENDS, SEE DETAIL
 USFL 190.235, STA 30+451.8, 14.5 m RT
 DSFL 190.175, STA 30+440.0, 14.8 m RT

STA 30+490.4
 PROPOSED PIPE/CULVERT, CLASS D,
 TYPE 1, 375 mm ϕ , 11.9 m
 WITH MITERED ENDS, SEE DETAIL
 USFL 190.455, STA 30+496.2, 13.3 m RT
 DSFL 190.400, STA 30+484.6, 13.5 m RT

GERALD T. RIORDAN
[PARCEL NO. 8239072]

P & R PROMOTIONS, INC.
[PARCEL NO. 8239073]

SEE SHEET XXX
FOR THE RAISED MEDIAN DETAILS



SOIL STRATA PLAN SHEETS ARE
PROVIDED AS A REFERENCE FOR
SOIL AND GROUNDWATER
INFORMATION ONLY.

REVISIONS	
NAME	DATE

ILLINOIS DEPARTMENT OF TRANSPORTATION
 SOIL STRATA PLAN
 FAP 310 (IL 255)
 SECTION 60-15-2 & 60-15HB-2
 MADISON COUNTY
 DRAWN BY EBB
 CHECKED BY
 DATE

SE 1/4, SEC 14, T 6 N, R 10 W, 3RD PM

IL 111, STA 30+325 TO STA 30+500

12/7/2007

pt\2071.es\000024\d\1111\soils\strata\plan\015c04.dgn