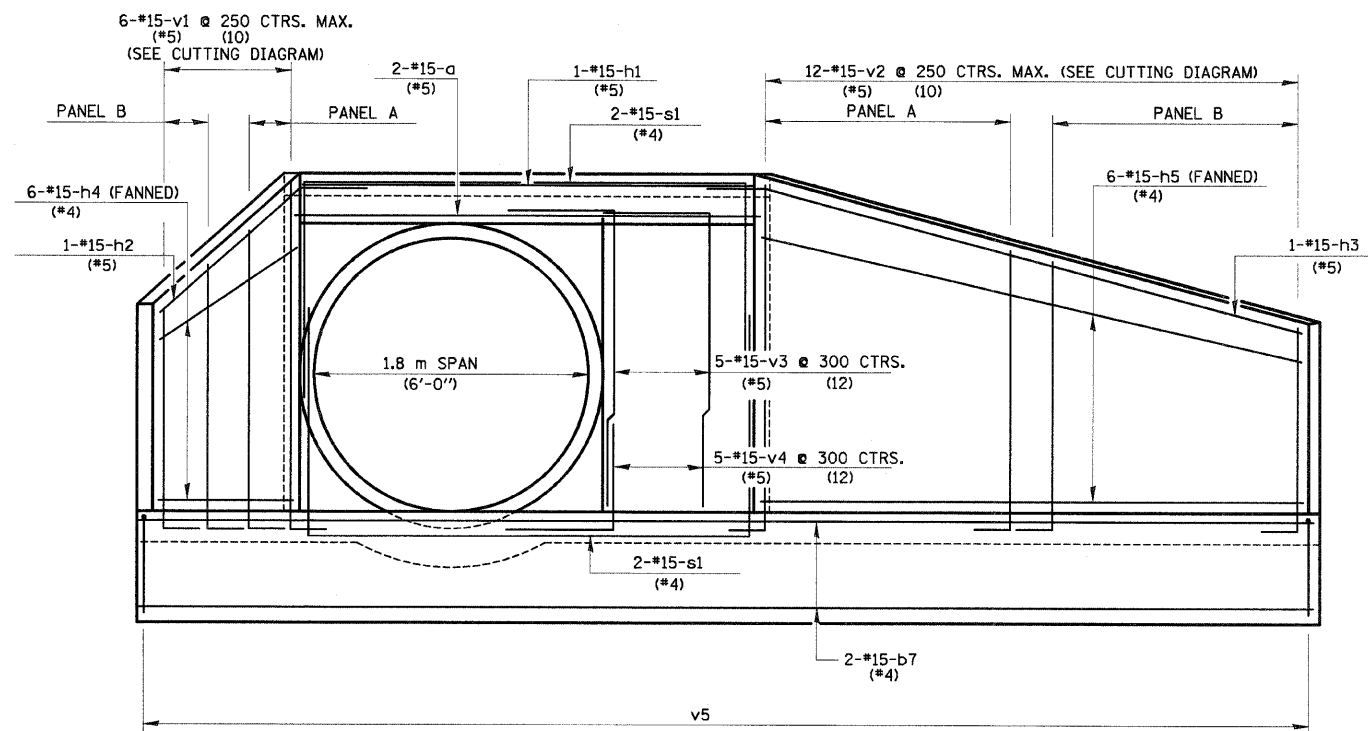
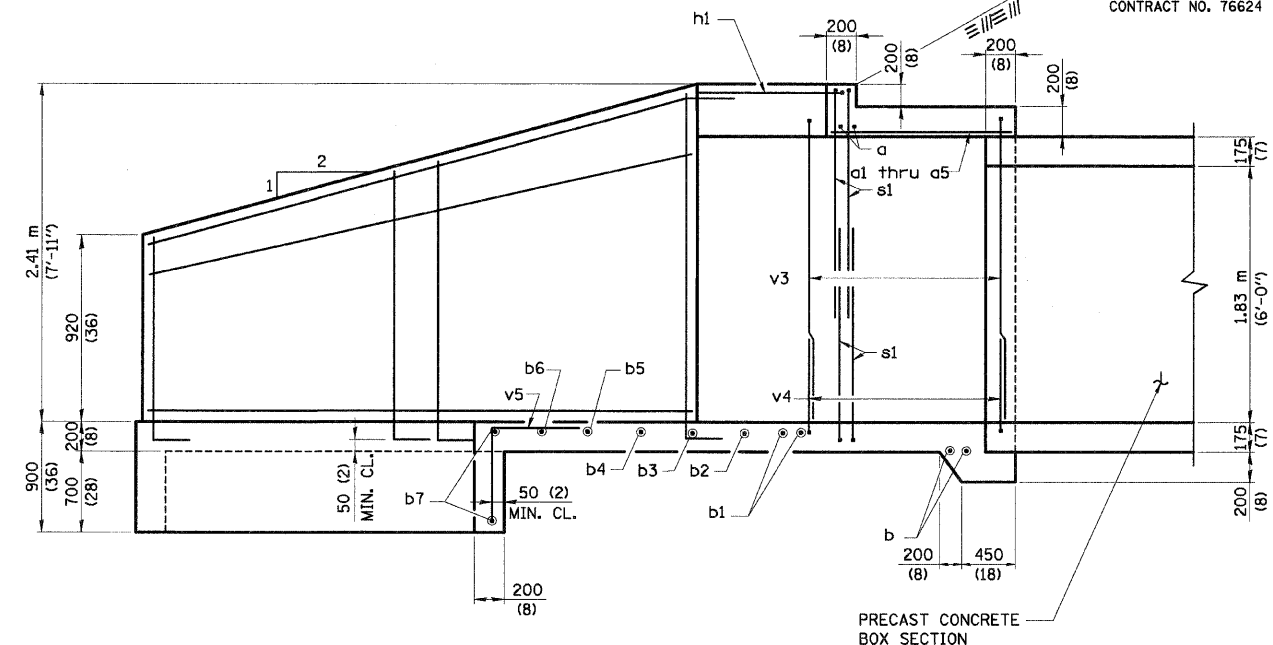


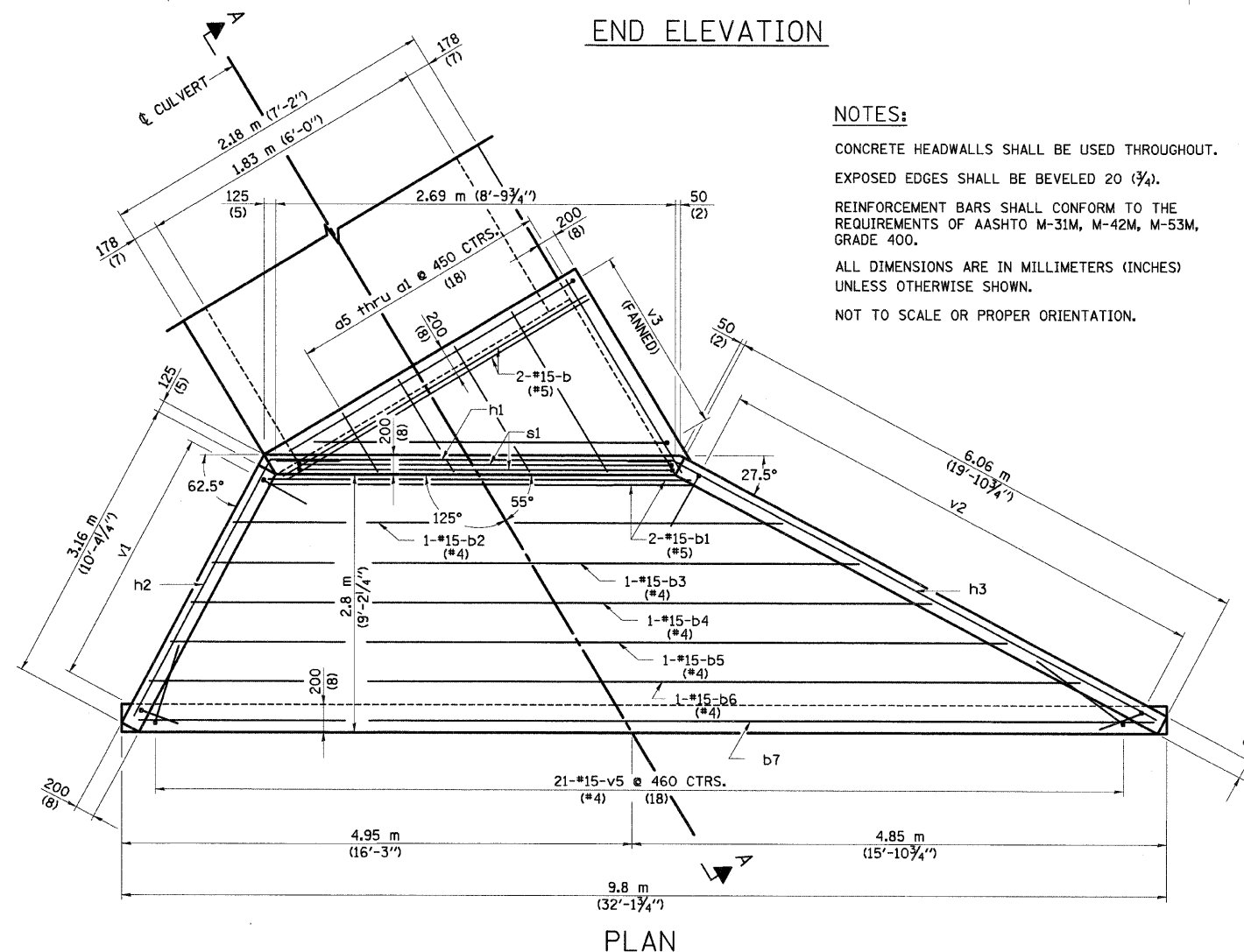
F.A.P. RTE.	SECTION	COUNTY	TOTAL SHEETS	SHEET NO.
310	60-15-2 60-15HB-2	MADISON	272	145
STA.	TO STA.			
FED. ROAD DIST. NO.	ILLINOIS FED. AID PROJECT			
CONTRACT NO. 76624				



END ELEVATION



SECTION A-A



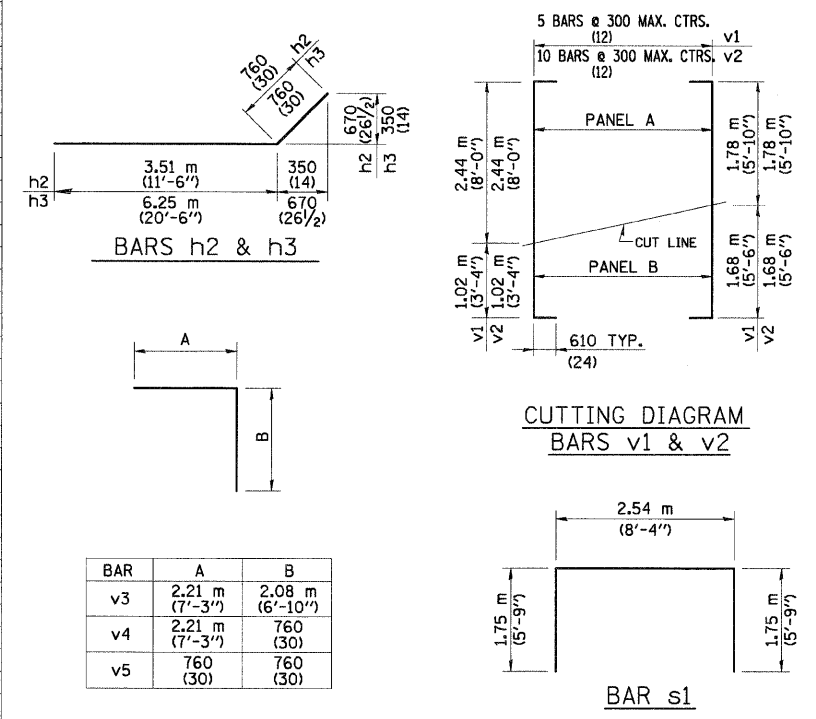
PLAN

NOTES:

- CONCRETE HEADWALLS SHALL BE USED THROUGHOUT.
- EXPOSED EDGES SHALL BE BEVELED 20 (3/4).
- REINFORCEMENT BARS SHALL CONFORM TO THE REQUIREMENTS OF AASHTO M-31M, M-42M, M-53M, GRADE 400.
- ALL DIMENSIONS ARE IN MILLIMETERS (INCHES) UNLESS OTHERWISE SHOWN.
- NOT TO SCALE OR PROPER ORIENTATION.

BILL OF MATERIAL

BAR SIZE	NO.	LENGTH	SHAPE	
a	No.15 (No.5)	2	2.82 m (9'-3")	—
a1	(No.4)	1	1.78 m (5'-10")	—
a2	(No.4)	1	1.47 m (4'-10")	—
a3	(No.4)	1	1.14 m (3'-9")	—
a4	(No.4)	1	840 (33)	—
a5	(No.4)	1	510 (20)	—
b	(No.5)	2	2.29 m (7'-6")	—
b1	(No.5)	2	3.3 m (10'-10")	—
b2	(No.4)	1	4.49 m (14'-9")	—
b3	(No.4)	1	5.56 m (18'-3")	—
b4	(No.4)	1	6.6 m (21'-8")	—
b5	(No.4)	1	7.67 m (25'-2")	—
b6	(No.4)	1	8.74 m (28'-8")	—
b7	(No.4)	1	9.7 m (31'-10")	—
h1	(No.5)	1	2.82 m (9'-3")	—
h2	(No.5)	1	4.27 m (14'-0")	—
h3	(No.5)	1	7.01 m (23'-0")	—
h4	(No.4)	6	3.07 m (10'-1")	—
h5	(No.4)	6	5.97 m (19'-7")	—
v1	(No.5)	6	4.68 m (15'-4")	—
v2	(No.5)	12	4.68 m (15'-4")	—
v3	(No.5)	5	4.29 m (14'-1")	—
v4	(No.5)	5	2.97 m (9'-9")	—
v5	(No.4)	21	1.52 m (5'-0")	—
s1	No.15 (No.4)	4	6.04 m (19'-10")	—
CONCRETE HEADWALLS		m3 (C.Y.)	9.9 (12.9)	
REINFORCEMENT BARS		kg (Lbs.)	500 (910)	



CUTTING DIAGRAM BARS v1 & v2

BAR	A	B
v3	2.21 m (7'-3")	2.08 m (6'-10")
v4	2.21 m (7'-3")	760 (30)
v5	760 (30)	760 (30)

NOTES:

- TABLE FOR ONE (1) HEADWALL ONLY. TWO (2) HEADWALLS REQUIRED.
- BAR DIMENSIONS ARE OUT TO OUT.

REVISIONS		ILLINOIS DEPARTMENT OF TRANSPORTATION CAST-IN-PLACE HEADWALLS STATION 39+838 1800 mm DIA. PIPE CULVERT @ 35° SKEW
NAME	DATE	
		DRAWN BY PTW CHECKED BY ADL
		DATE

12/7/2007

p:\00files\200224\d1111\headwall\headwall39838.dgn