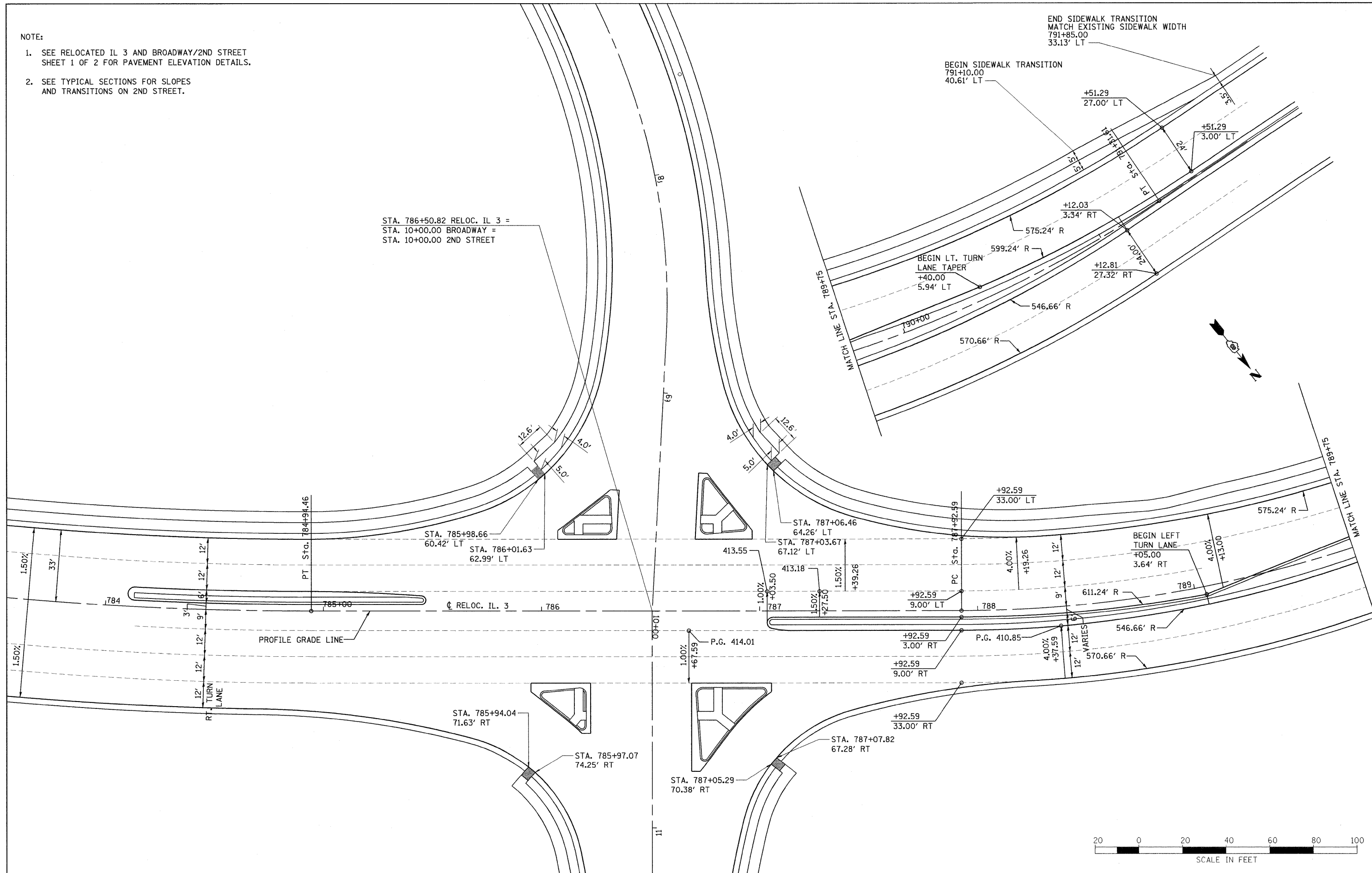


NOTE:

1. SEE RELOCATED IL 3 AND BROADWAY/2ND STREET SHEET 1 OF 2 FOR PAVEMENT ELEVATION DETAILS.
2. SEE TYPICAL SECTIONS FOR SLOPES AND TRANSITIONS ON 2ND STREET.



STA. 786+50.82 RELOC. IL 3 =
 STA. 10+00.00 BROADWAY =
 STA. 10+00.00 2ND STREET

END SIDEWALK TRANSITION
 MATCH EXISTING SIDEWALK WIDTH
 791+85.00
 33.13' LT

BEGIN SIDEWALK TRANSITION
 791+10.00
 40.61' LT

+51.29
 27.00' LT

+51.29
 3.00' LT

+12.03
 3.34' RT

BEGIN LT. TURN
 LANE TAPER
 +40.00
 5.94' LT

+12.81
 27.32' RT

STA. 785+98.66
 60.42' LT

STA. 786+01.63
 62.99' LT

STA. 787+06.46
 64.26' LT

STA. 787+03.67
 67.12' LT

+92.59
 33.00' LT

BEGIN LEFT
 TURN LANE
 +05.00
 3.64' RT

PROFILE GRADE LINE

STA. 785+94.04
 71.63' RT

STA. 785+97.07
 74.25' RT

STA. 787+05.29
 70.38' RT

STA. 787+07.82
 67.28' RT

+92.59
 9.00' LT

+92.59
 9.00' RT

+92.59
 33.00' RT

+19.26
 4.00%

+37.59
 4.00%

+37.59
 12' VARIES



FILE NAME = r3mint.bdwy2_new.dgn	USER NAME = weaverlg	DESIGNED - L. WEAVER	REVISED -	STATE OF ILLINOIS DEPARTMENT OF TRANSPORTATION	INTERSECTION DETAIL - RELOC. IL 3 AND BROADWAY / 2ND STREET - SHEET 2 OF 2	F.A. RTE. 788	SECTION 520-2-2	COUNTY MADISON	TOTAL SHEETS 173	SHEET NO. 113
PLOT SCALE = #SCALE#	CHECKED - A. FREY	REVISED -	FED. ROAD DIST. NO.			ILLINOIS FED. AID PROJECT	CONTRACT NO. 76633			
PLOT DATE = 02/02/2009	DATE - 02/06/2009	REVISED -	SCALE: 1"=20'			SHEET NO. 4 OF 4 SHEETS	STA. TO STA.			