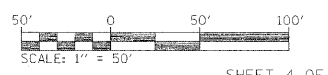
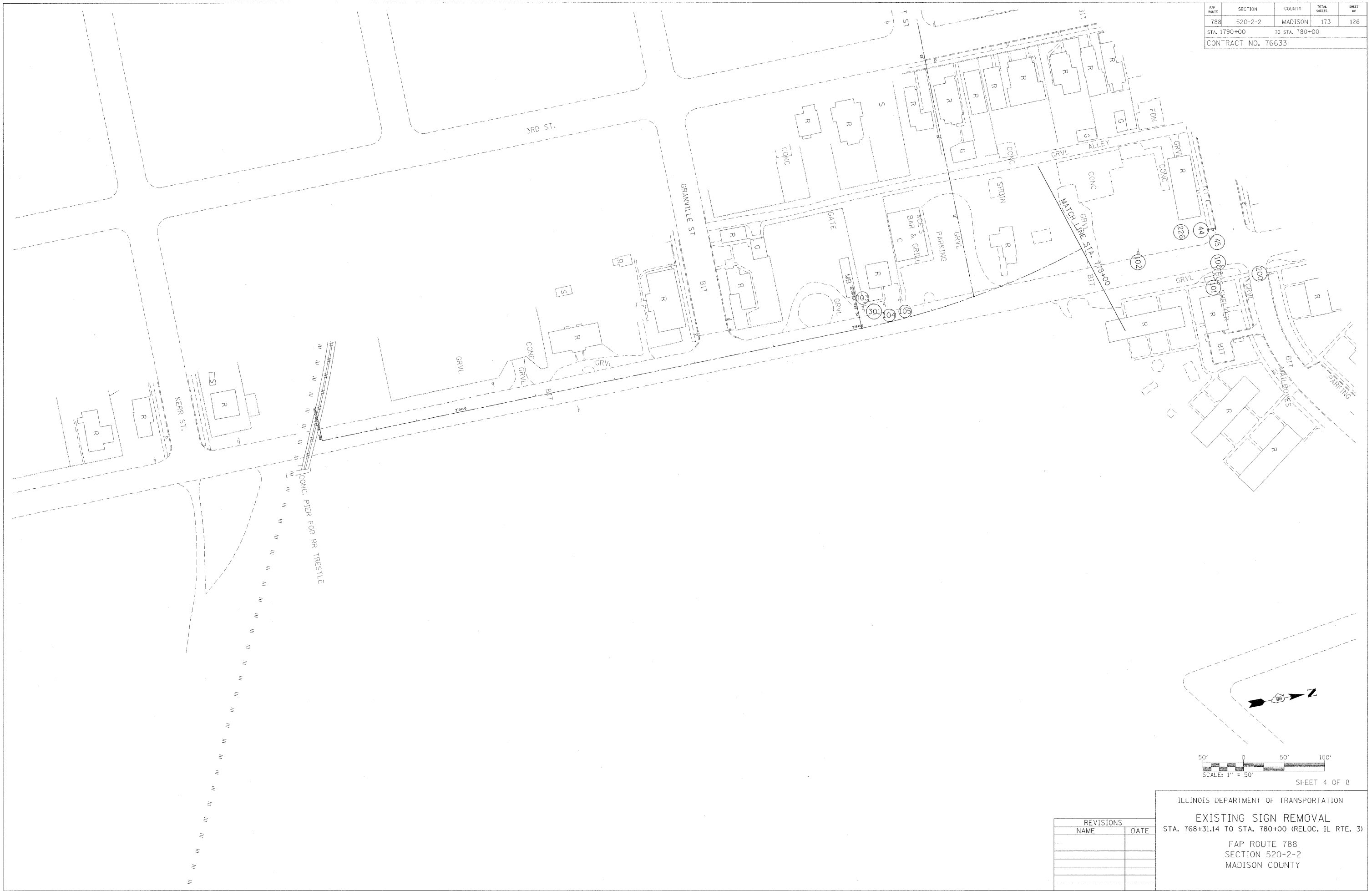


FAP ROUTE	SECTION	COUNTY	TOTAL SHEETS	SHEET NO.
788	520-2-2	MADISON	173	126
STA. 1790+00		TO STA. 780+00		
CONTRACT NO. 76633				

PLAN	SURVEYED	DATE
NOTE BOOK	ALIGNED	
NO.	CHECKED	
	BY	
	DATE	



SHEET 4 OF 8

ILLINOIS DEPARTMENT OF TRANSPORTATION
EXISTING SIGN REMOVAL
 STA. 768+31.14 TO STA. 780+00 (RELOC. IL RTE. 3)
 FAP ROUTE 788
 SECTION 520-2-2
 MADISON COUNTY

REVISIONS	
NAME	DATE

EXISTING SIGN REMOVAL

02/02/2011
 08:26:46 PM
 000-SPEC
 *REF - EXIST 3
 *REF -