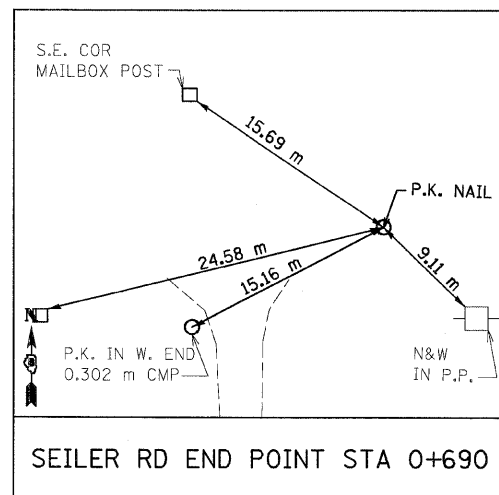
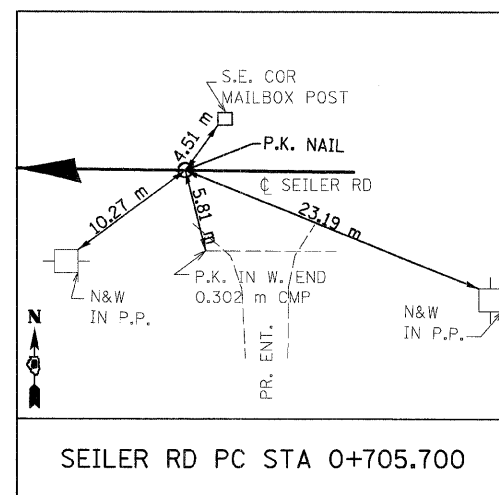


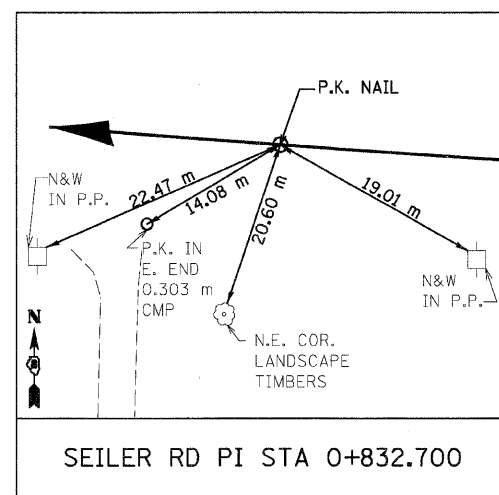
F.A.P. RTE.	SECTION	COUNTY	TOTAL SHEETS	SHEET NO.
310	60-15-1, 60-15HB-1	MADISON	238	26
STA.		TO STA.		
FED. ROAD DIST. NO.		ILLINOIS FED. AID PROJECT		
CONTRACT NO. 76635				



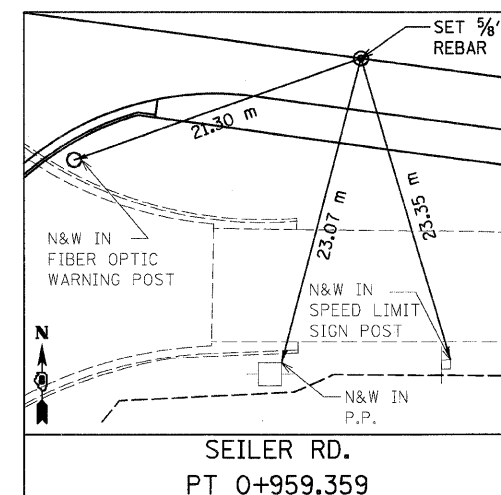
SEILER RD END POINT STA 0+690
N 255,223.6796 E 699,141.8494



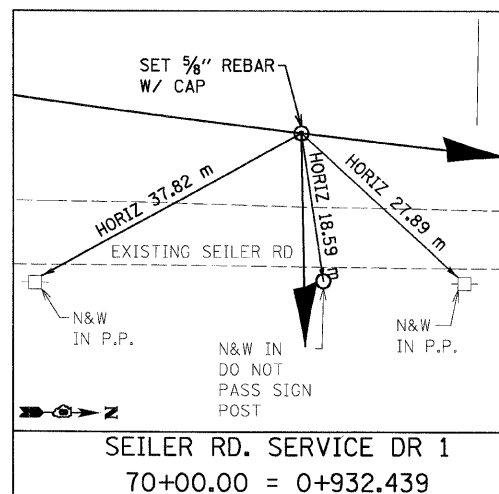
SEILER RD PC STA 0+705.700
N 255,223.7963 E 699,126.1493



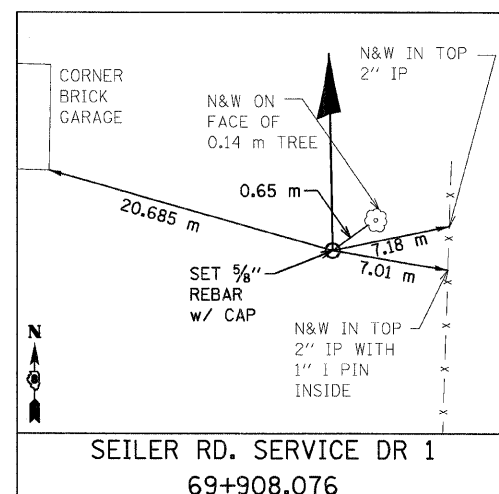
SEILER RD PI STA 0+832.700
N 255,224.7400 E 698,999.1530



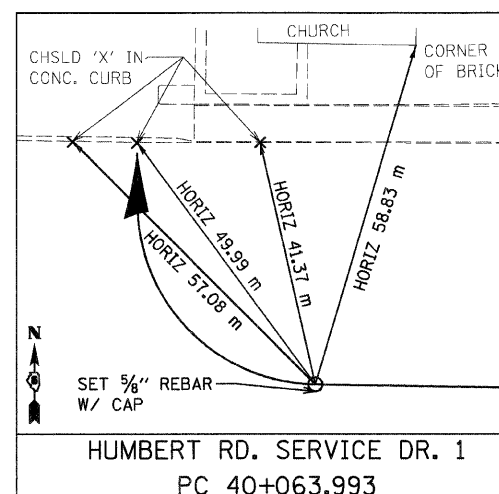
SEILER RD.
PT 0+959.359
N 255,241.7399 E 698,873.2961



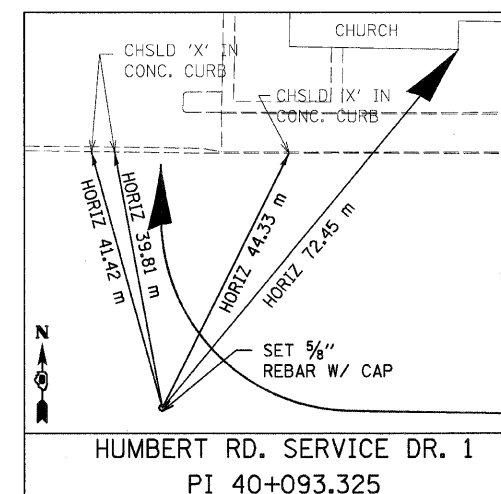
SEILER RD. SERVICE DR 1
70+00.00 = 0+932.439
N 255,238.3160 E 698,899.9970



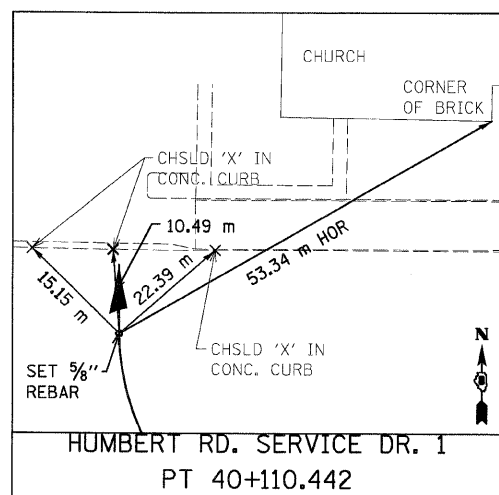
SEILER RD. SERVICE DR 1
69+908.076
N 255,146.4055 E 698,901.6035



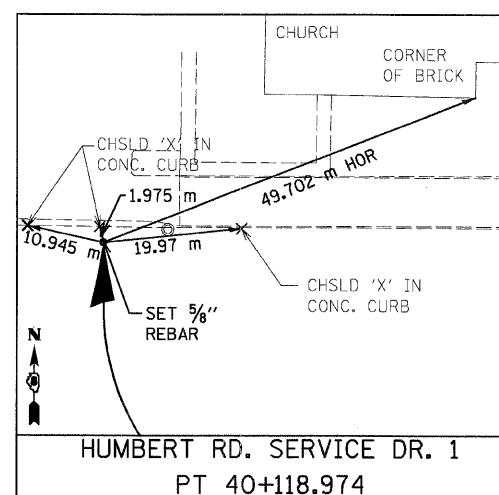
HUMBERT RD. SERVICE DR. 1
PC 40+063.993
N 254,727.4602 E 698,760.5676



HUMBERT RD. SERVICE DR. 1
PI 40+093.325
N 254,727.9464 E 7698,731.2394



HUMBERT RD. SERVICE DR. 1
PT 40+110.442
N 254,757.2780 E 698,731.0654



HUMBERT RD. SERVICE DR. 1
PT 40+118.974
N 254,765.8104 E 698,731.0148

REVISIONS	
NAME	DATE

ILLINOIS DEPARTMENT OF TRANSPORTATION
HORIZONTAL CONTROL POINTS
FAP 310 (IL 255)
SECTIONS 60-15-1, 60-15HB-1
MADISON COUNTY
DRAWN BY KAH
CHECKED BY
DATE