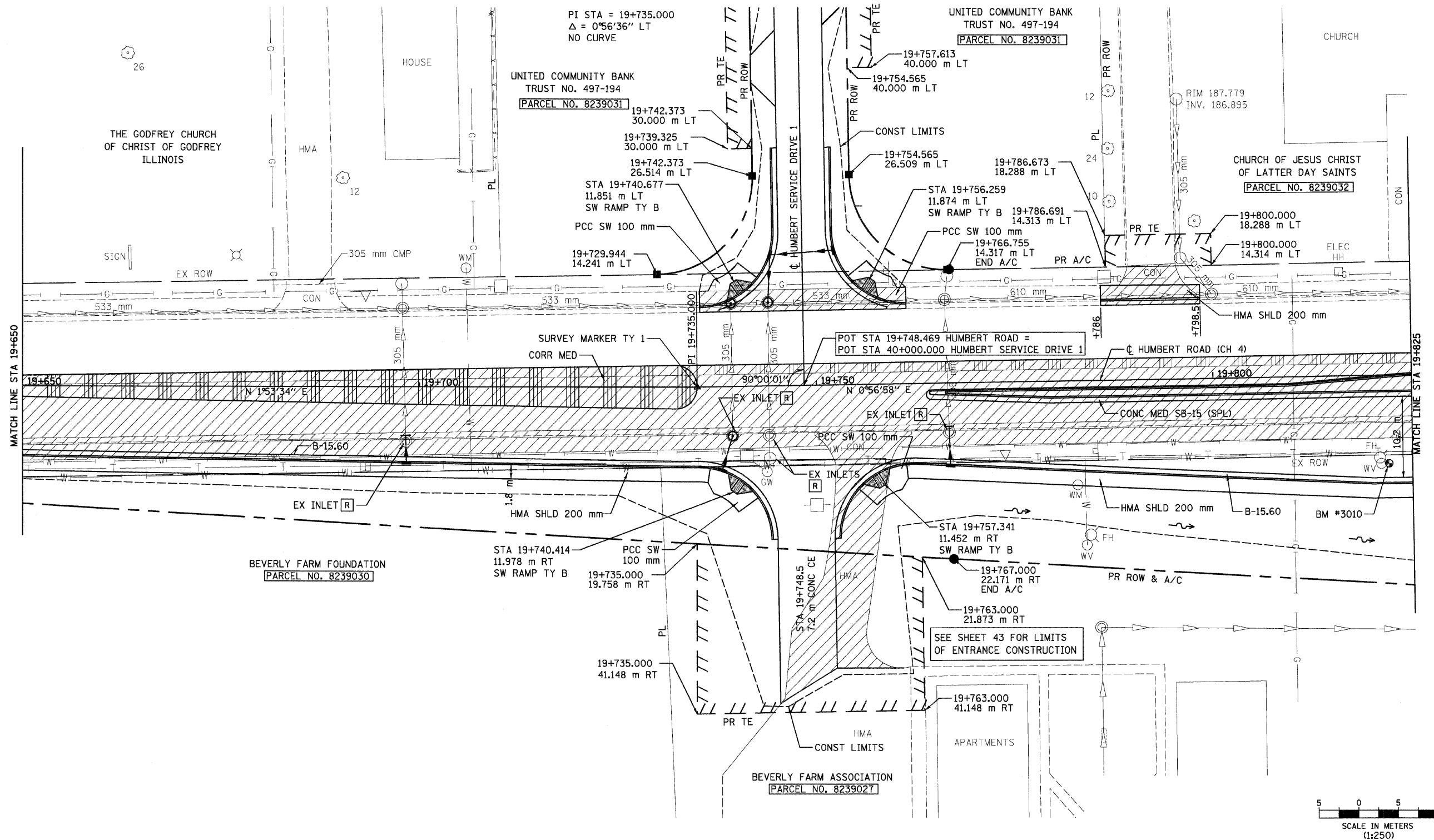


NE 1/4, SEC 23, T 6 N, R 10 W, 3RD PM

F.A.P. RTE.	SECTION	COUNTY	TOTAL SHEETS	SHEET NO.
310	60-15-1, 60-15HB-1	MADISON	238	33
STA. 19+650		TO STA. 19+825		
ILLINOIS		FED. AID PROJECT		
CONTRACT NO. 76635				

SEE SHEET 43 FOR HUMBERT SERVICE DRIVE 1 PLAN AND PROFILE



NE 1/4, SEC 23, T 6 N, R 10 W, 3RD PM

REVISIONS	
NAME	DATE

ILLINOIS DEPARTMENT OF TRANSPORTATION  
 PLAN  
 FAP 310 (IL 255)  
 SECTIONS 60-15-1, 60-15HB-1  
 MADISON COUNTY  
 DRAWN BY  
 CHECKED BY  
 DATE

HUMBERT ROAD STA 19+650 TO STA 19+825

p:\00f\1es\00024\dhumbert\plan\plan015b02.dgn