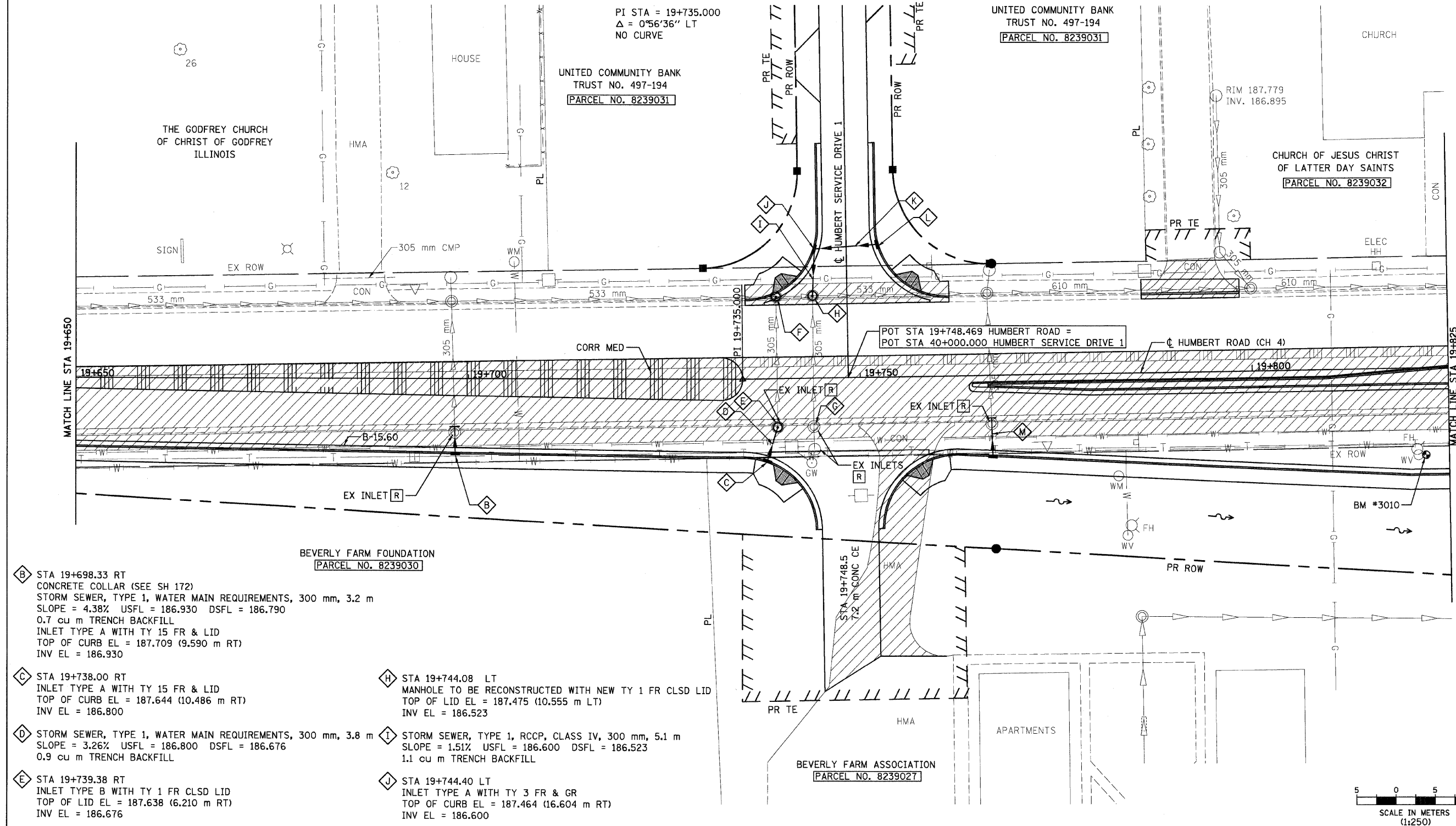
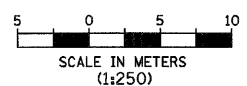


F.A.P. RTE.	SECTION	COUNTY	TOTAL SHEETS	SHEET NO.
310	60-15-1, 60-15HB-1	MADISON	238	51
STA. 19+650		TO STA. 19+825		
FED. ROAD DIST. NO.		ILLINOIS FED. AID PROJECT		
CONTRACT NO. 76635				

SEE SHEET 43 FOR HUMBERT SERVICE DRIVE 1 PLAN AND PROFILE



- B** STA 19+698.33 RT
CONCRETE COLLAR (SEE SH 172)
STORM SEWER, TYPE 1, WATER MAIN REQUIREMENTS, 300 mm, 3.2 m
SLOPE = 4.38% USFL = 186.930 DSFL = 186.790
0.7 cu m TRENCH BACKFILL
INLET TYPE A WITH TY 15 FR & LID
TOP OF CURB EL = 187.709 (9.590 m RT)
INV EL = 186.930
- C** STA 19+738.00 RT
INLET TYPE A WITH TY 15 FR & LID
TOP OF CURB EL = 187.644 (10.486 m RT)
INV EL = 186.800
- D** STORM SEWER, TYPE 1, WATER MAIN REQUIREMENTS, 300 mm, 3.8 m
SLOPE = 3.26% USFL = 186.800 DSFL = 186.676
0.9 cu m TRENCH BACKFILL
- E** STA 19+739.38 RT
INLET TYPE B WITH TY 1 FR CLSD LID
TOP OF LID EL = 187.638 (6.210 m RT)
INV EL = 186.676
- F** STA 19+739.39 10.52 m LT
MANHOLE TO BE RECONSTRUCTED WITH NEW TY 23 FR & GR
TOP OF CURB EL = 187.599
INV EL = 186.535
- G** STA 19+743.99 RT
PLUG EX 305 mm SS
FILL WITH CONTROLLED LOW STRENGTH MATERIAL, 1.2 cu m
- H** STA 19+744.08 LT
MANHOLE TO BE RECONSTRUCTED WITH NEW TY 1 FR CLSD LID
TOP OF LID EL = 187.475 (10.555 m LT)
INV EL = 186.523
- I** STORM SEWER, TYPE 1, RCCP, CLASS IV, 300 mm, 5.1 m
SLOPE = 1.51% USFL = 186.600 DSFL = 186.523
1.1 cu m TRENCH BACKFILL
- J** STA 19+744.40 LT
INLET TYPE A WITH TY 3 FR & GR
TOP OF CURB EL = 187.464 (16.604 m RT)
INV EL = 186.600
- K** STORM SEWER, TYPE 1, RCCP, CLASS IV, 300 mm, 7.4 m
SLOPE = 1.42% USFL = 186.705 DSFL = 186.600
1.6 cu m TRENCH BACKFILL
- L** STA 19+752.10 LT
INLET TYPE A WITH TY 3 FR & GR
TOP OF CURB EL = 187.474 (17.074 m RT)
INV EL = 186.705
- M** STA 19+766.78 RT
CONCRETE COLLAR (SEE SH 172)
STORM SEWER, TYPE 1, WATER MAIN REQUIREMENTS, 300 mm, 4.7 m
SLOPE = 0.32% USFL = 186.634 DSFL = 186.619
1.4 cu m TRENCH BACKFILL
INLET TYPE A WITH TY 15 FR & LID
TOP OF CURB EL = 187.690 (10.423 m RT)
INV EL = 186.634



REVISIONS	
NAME	DATE

ILLINOIS DEPARTMENT OF TRANSPORTATION
DRAINAGE PLAN
FAP 310 (IL 255)
SECTIONS 60-15-1, 60-15HB-1
MADISON COUNTY
DRAWN BY
CHECKED BY
DATE

HUMBERT ROAD STA 19+650 TO STA 19+825

p:\00f\11es\20224\dhumbert\plan\prof\11es\dr-plan\015b02.dgn