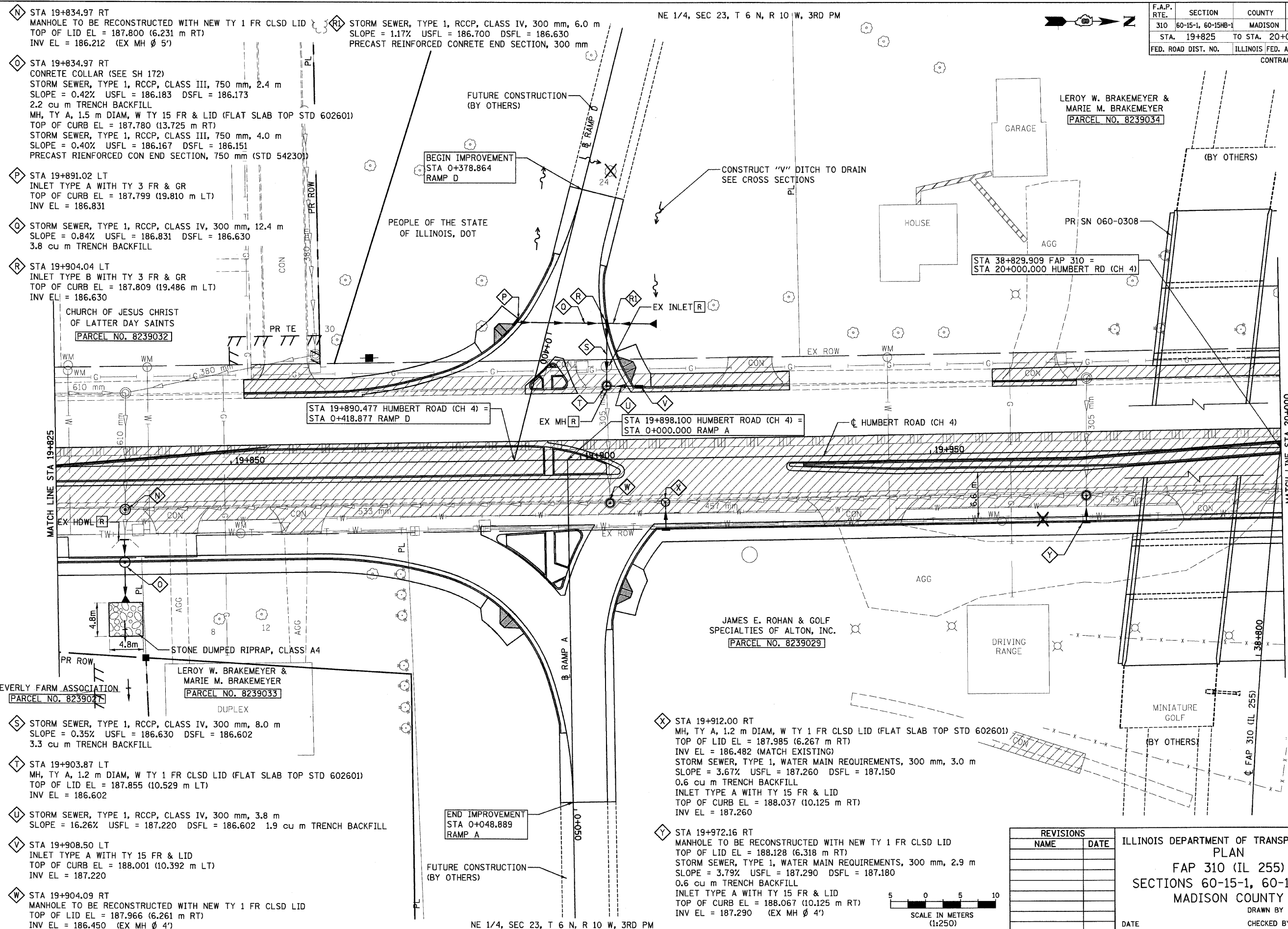


F.A.P. RTE.	SECTION	COUNTY	TOTAL SHEETS	SHEET NO.
310	60-15-1, 60-15HB-1	MADISON	238	53
STA. 19+825		TO STA. 20+000		
FED. ROAD DIST. NO.		ILLINOIS FED. AID PROJECT		
CONTRACT NO. 76635				



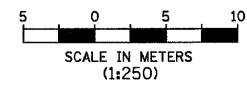
- N STA 19+834.97 RT  
MANHOLE TO BE RECONSTRUCTED WITH NEW TY 1 FR CLSD LID  
TOP OF LID EL = 187.800 (6.231 m RT)  
INV EL = 186.212 (EX MH Ø 5')
- O STA 19+834.97 RT  
CONCRETE COLLAR (SEE SH 172)  
STORM SEWER, TYPE 1, RCCP, CLASS III, 750 mm, 2.4 m  
SLOPE = 0.42% USFL = 186.183 DSFL = 186.173  
2.2 cu m TRENCH BACKFILL  
MH, TY A, 1.5 m DIAM, W TY 15 FR & LID (FLAT SLAB TOP STD 602601)  
TOP OF CURB EL = 187.780 (13.725 m RT)  
STORM SEWER, TYPE 1, RCCP, CLASS III, 750 mm, 4.0 m  
SLOPE = 0.40% USFL = 186.167 DSFL = 186.151  
PRECAST RIENFORCED CON END SECTION, 750 mm (STD 542301)
- P STA 19+891.02 LT  
INLET TYPE A WITH TY 3 FR & GR  
TOP OF CURB EL = 187.799 (19.810 m LT)  
INV EL = 186.831
- Q STORM SEWER, TYPE 1, RCCP, CLASS IV, 300 mm, 12.4 m  
SLOPE = 0.84% USFL = 186.831 DSFL = 186.630  
3.8 cu m TRENCH BACKFILL
- R STA 19+904.04 LT  
INLET TYPE B WITH TY 3 FR & GR  
TOP OF CURB EL = 187.809 (19.486 m LT)  
INV EL = 186.630  
CHURCH OF JESUS CHRIST OF LATTER DAY SAINTS  
PARCEL NO. 8239032
- S STORM SEWER, TYPE 1, RCCP, CLASS IV, 300 mm, 8.0 m  
SLOPE = 0.35% USFL = 186.630 DSFL = 186.602  
3.3 cu m TRENCH BACKFILL
- T STA 19+903.87 LT  
MH, TY A, 1.2 m DIAM, W TY 1 FR CLSD LID (FLAT SLAB TOP STD 602601)  
TOP OF LID EL = 187.855 (10.529 m LT)  
INV EL = 186.602
- U STORM SEWER, TYPE 1, RCCP, CLASS IV, 300 mm, 3.8 m  
SLOPE = 16.26% USFL = 187.220 DSFL = 186.602 1.9 cu m TRENCH BACKFILL
- V STA 19+908.50 LT  
INLET TYPE A WITH TY 15 FR & LID  
TOP OF CURB EL = 188.001 (10.392 m LT)  
INV EL = 187.220
- W STA 19+904.09 RT  
MANHOLE TO BE RECONSTRUCTED WITH NEW TY 1 FR CLSD LID  
TOP OF LID EL = 187.966 (6.261 m RT)  
INV EL = 186.450 (EX MH Ø 4')

- RI STORM SEWER, TYPE 1, RCCP, CLASS IV, 300 mm, 6.0 m  
SLOPE = 1.17% USFL = 186.700 DSFL = 186.630  
PRECAST REINFORCED CONCRETE END SECTION, 300 mm
- STA 19+890.477 HUMBERT ROAD (CH 4) = STA 0+418.877 RAMP D
- STA 19+898.100 HUMBERT ROAD (CH 4) = STA 0+000.000 RAMP A
- STA 19+912.00 RT  
MH, TY A, 1.2 m DIAM, W TY 1 FR CLSD LID (FLAT SLAB TOP STD 602601)  
TOP OF LID EL = 187.985 (6.267 m RT)  
INV EL = 186.482 (MATCH EXISTING)  
STORM SEWER, TYPE 1, WATER MAIN REQUIREMENTS, 300 mm, 3.0 m  
SLOPE = 3.67% USFL = 187.260 DSFL = 187.150  
0.6 cu m TRENCH BACKFILL  
INLET TYPE A WITH TY 15 FR & LID  
TOP OF CURB EL = 188.037 (10.125 m RT)  
INV EL = 187.260
- STA 19+972.16 RT  
MANHOLE TO BE RECONSTRUCTED WITH NEW TY 1 FR CLSD LID  
TOP OF LID EL = 188.128 (6.318 m RT)  
STORM SEWER, TYPE 1, WATER MAIN REQUIREMENTS, 300 mm, 2.9 m  
SLOPE = 3.79% USFL = 187.290 DSFL = 187.180  
0.6 cu m TRENCH BACKFILL  
INLET TYPE A WITH TY 15 FR & LID  
TOP OF CURB EL = 188.067 (10.125 m RT)  
INV EL = 187.290 (EX MH Ø 4')

- X STA 19+912.00 RT  
MH, TY A, 1.2 m DIAM, W TY 1 FR CLSD LID (FLAT SLAB TOP STD 602601)  
TOP OF LID EL = 187.985 (6.267 m RT)  
INV EL = 186.482 (MATCH EXISTING)  
STORM SEWER, TYPE 1, WATER MAIN REQUIREMENTS, 300 mm, 3.0 m  
SLOPE = 3.67% USFL = 187.260 DSFL = 187.150  
0.6 cu m TRENCH BACKFILL  
INLET TYPE A WITH TY 15 FR & LID  
TOP OF CURB EL = 188.037 (10.125 m RT)  
INV EL = 187.260
- Y STA 19+972.16 RT  
MANHOLE TO BE RECONSTRUCTED WITH NEW TY 1 FR CLSD LID  
TOP OF LID EL = 188.128 (6.318 m RT)  
STORM SEWER, TYPE 1, WATER MAIN REQUIREMENTS, 300 mm, 2.9 m  
SLOPE = 3.79% USFL = 187.290 DSFL = 187.180  
0.6 cu m TRENCH BACKFILL  
INLET TYPE A WITH TY 15 FR & LID  
TOP OF CURB EL = 188.067 (10.125 m RT)  
INV EL = 187.290 (EX MH Ø 4')

REVISIONS	
NAME	DATE

ILLINOIS DEPARTMENT OF TRANSPORTATION  
 PLAN  
 FAP 310 (IL 255)  
 SECTIONS 60-15-1, 60-15HB-1  
 MADISON COUNTY  
 DRAWN BY  
 CHECKED BY  
 DATE



p:\00f\iles\00024\dhumbert\planprof\files\dr-plan\015b\03.dgn

NE 1/4, SEC 23, T 6 N, R 10 W, 3RD PM

HUMBERT ROAD STA 19+825 TO STA 20+000