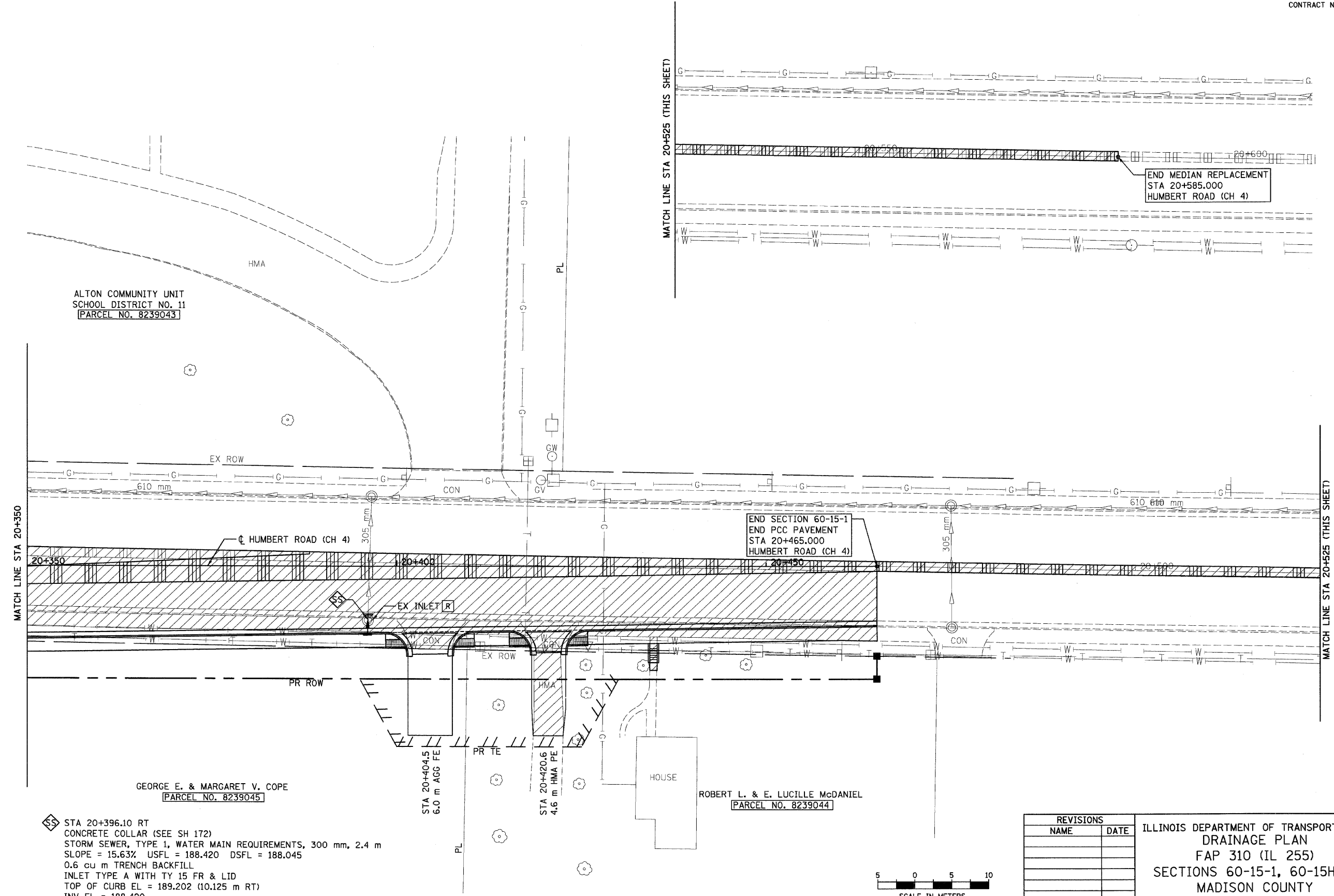


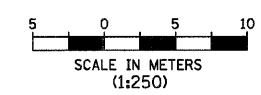
SE 1/4, SEC 14, T 6 N, R 10 W, 3RD PM



F.A.P. RTE.	SECTION	COUNTY	TOTAL SHEETS	SHEET NO.
310	60-15-1, 60-15HB-1	MADISON	238	59
STA. 20+350		TO STA.	20+525	
FED. ROAD DIST. NO.		ILLINOIS	FED. AID PROJECT	
CONTRACT NO. 76635				



STA 20+396.10 RT  
 CONCRETE COLLAR (SEE SH 172)  
 STORM SEWER, TYPE 1, WATER MAIN REQUIREMENTS, 300 mm, 2.4 m  
 SLOPE = 15.63% USFL = 188.420 DSFL = 188.045  
 0.6 cu m TRENCH BACKFILL  
 INLET TYPE A WITH TY 15 FR & LID  
 TOP OF CURB EL = 189.202 (10.125 m RT)  
 INV EL = 188.420



REVISIONS	
NAME	DATE

ILLINOIS DEPARTMENT OF TRANSPORTATION  
 DRAINAGE PLAN  
 FAP 310 (IL 255)  
 SECTIONS 60-15-1, 60-15HB-1  
 MADISON COUNTY  
 DRAWN BY  
 DATE  
 CHECKED BY

HUMBERT ROAD STA 20+350 TO STA 20+465

p:\002files\00224\chumbert\plonprof\files\drp\len015b06.dgn