

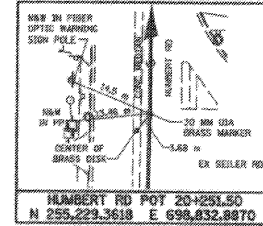
COORDINATES SHOWN HEREON ARE BASED ON SURVEY CONTROL DATA AS PROVIDED BY THE ILLINOIS DEPARTMENT OF TRANSPORTATION.

PART OF THE NE 1/4 OF SECTION 23, T6N, R10W, OF THE 3RD PM, MADISON COUNTY, ILLINOIS

BEARINGS SHOWN HEREON ARE BASED ON SURVEY CONTROL DATA AS PROVIDED BY THE ILLINOIS DEPARTMENT OF TRANSPORTATION.

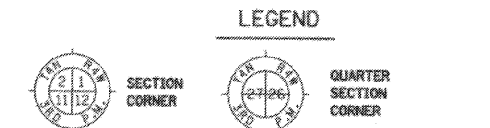
COORDINATE TABLE (FAP 310 IL 255) with columns for STATION, OFFSET, NORTH, and EAST.

COORDINATE TABLE (PR HUMBERT RD) with columns for STATION, OFFSET, NORTH, and EAST.



PR FAP310 CURVE 3: PI STA = 39+183.523, Δ = 62° 37' 42" (RT), R = 780.000 m (2,559.05'), T = 474.512 m (1,556.79'), L = 852.596 m (2,797.23'), E = 132.996 m (436.34'), PC STA = 38+709.010, PT STA = 39+661.606.

PR CURVE RAMP B-1: PI STA = 0+298.776, Δ = 24° 38' 29" (RT), R = 255.000 m (836.61'), T = 55.686 m (182.73'), L = 109.669 m (359.81'), E = 6.012 m (19.72'), PC STA = 0+243.080, PT STA = 0+352.149.



FOUND BRASS PLUG NW CORNER NE 1/4 NE 1/4 SEC 23 PI STA 33+44.06 COUNTY HWY 12A SECTION 109 MFT R/W VOL. 7, PAGE 179 PI STA 33+44.06 COUNTY HWY 12A SECTION 109 MFT R/W VOL. 7, PAGE 179

SEE SHEET 29

NE 1/4, NE 1/4 SECTION 23

SEE SHEET 37, 38

SEE SHEET 18, 20

- STAKING OF PROPOSED RIGHT OF WAY. SET 5/8 INCH METAL ROD WITH DIVISION OF HIGHWAY SURVEY MARKER TO MONUMENT THE POSITION SHOWN, IDENTIFIED BY INSCRIPTION DATA AND SURVEYORS REGISTRATION NUMBER.
STAKING OF PROPOSED RIGHT OF WAY IN CULTIVATED AREAS. SET 5/8 INCH METAL ROD WITH DIVISION OF HIGHWAY SURVEY MARKER 20 INCHES BELOW GROUND SURFACE TO MONUMENT THE POSITION SHOWN, IDENTIFIED BY INSCRIPTION DATA AND SURVEYORS REGISTRATION NUMBER.

STATE OF ILLINOIS )
COUNTY OF ADAMS )

THIS IS TO CERTIFY THAT I, JOHN E. BASINGER AN ILLINOIS PROFESSIONAL LAND SURVEYOR, HAVE DIRECTED THE SURVEY AND DRAFTING OF THE PLAT OF HIGHWAYS SHOWN HEREON IN SECTION 23, TOWNSHIP 6 NORTH, RANGE 10 WEST, OF THE THIRD PRINCIPAL MERIDIAN, MADISON COUNTY, THAT THE SURVEY IS TRUE AND COMPLETE AS SHOWN TO THE BEST OF MY KNOWLEDGE AND BELIEF, THAT THE PLAT CORRECTLY REPRESENTS SAID SURVEY, THAT ALL MONUMENTS FOUND AND ESTABLISHED ARE OF PERMANENT QUALITY AND OCCUPY THE POSITIONS SHOWN THEREON AND THAT THE MONUMENTS ARE SUFFICIENT TO ENABLE THE SURVEY TO BE RETRACED, MADE FOR THE DEPARTMENT OF TRANSPORTATION, STATE OF ILLINOIS.

DATED 11-30-2005

JOHN E. BASINGER, PLS #2766 LICENSE EXPIRATION DATE 11-30-2008 "THIS PROFESSIONAL SERVICE CONFORMS TO THE CURRENT ILLINOIS MINIMUM STANDARDS FOR A BOUNDARY SURVEY." FIELD WORK COMPLETED: APRIL 2004



KLINGNER & ASSOCIATES, P.C. Engineers / Architects

616 North 24th Street (217) 223-3670 Quinoy, Illinois 62301 FAX 223-3603 Internet Address: www.klingner.com STATE OF ILLINOIS DESIGN FIRM # 0442736

ILLINOIS DEPARTMENT OF TRANSPORTATION PLAT OF HIGHWAYS FAP ROUTE 310 (IL 255) SECTION 60-15 MADISON COUNTY JOB NO. R-98-039-92 HUMBERT ROAD STATION 19+837.389 TO STATION 20+047.297 SCALE 1:1000 SHEET 23 OF 55

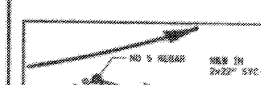
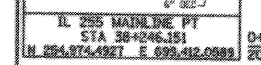
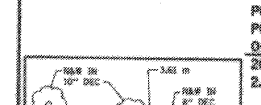


Table with columns: PARCEL NO., OWNER, TOTAL HOLDING (ACRES, SQ. FT.), FEE SIMPLE ACQUISITION (GROSS, PREVIOUSLY DEDICATED, NET, REMAINDER), EASEMENTS (PE, TE, EASEMENT PURPOSE), PERMANENT TAX NUMBER, PROPERTY ACQUIRED BY.

11/30/2005 3:05:16 PM I:\2005\0805\11300505.dwg

PLAT DATE: 11/30/2005 3:05:16 PM