

F.A.P. RTE.	SECTION	COUNTY	TOTAL SHEETS	SHEET NO.
310	60-15-1, 60-15HB-1	MADISON	238	84
STA.		TO STA.		
FED. ROAD DIST. NO.		ILLINOIS FED. AID PROJECT		
		CONTRACT NO. 76635		

POINT	STATION	OFFSET	ELEVATION
A1	0+567.258	4.900 LT	188.078
A2	0+570.408	5.084 LT	188.138
A3	0+573.514	5.635 LT	188.199
A4	20+098.283	14.973 RT	188.258
A5	20+097.028	12.078 RT	188.312
A6	20+095.444	9.350 RT	188.363

POINT	STATION	OFFSET	ELEVATION
B1	0+546.220	2.300 RT	187.876
B2	0+549.880	2.410 RT	187.927
B3	0+553.528	2.740 RT	187.983
B4	0+557.150	3.288 RT	188.035
B5	0+560.731	4.051 RT	188.087
B6	0+564.261	5.029 RT	188.130
B7	0+568.370	6.753 RT	188.180
B8	20+114.064	19.439 RT	188.240
B9	20+117.216	16.287 RT	188.290
B10	20+120.916	13.804 RT	188.340
B11	20+125.025	12.079 RT	188.379
B12	20+128.554	11.102 RT	188.408
B13	20+132.136	10.337 RT	188.431
B14	20+135.757	9.789 RT	188.451
B15	20+139.406	9.460 RT	188.467
B16	20+143.066	9.350 RT	188.477

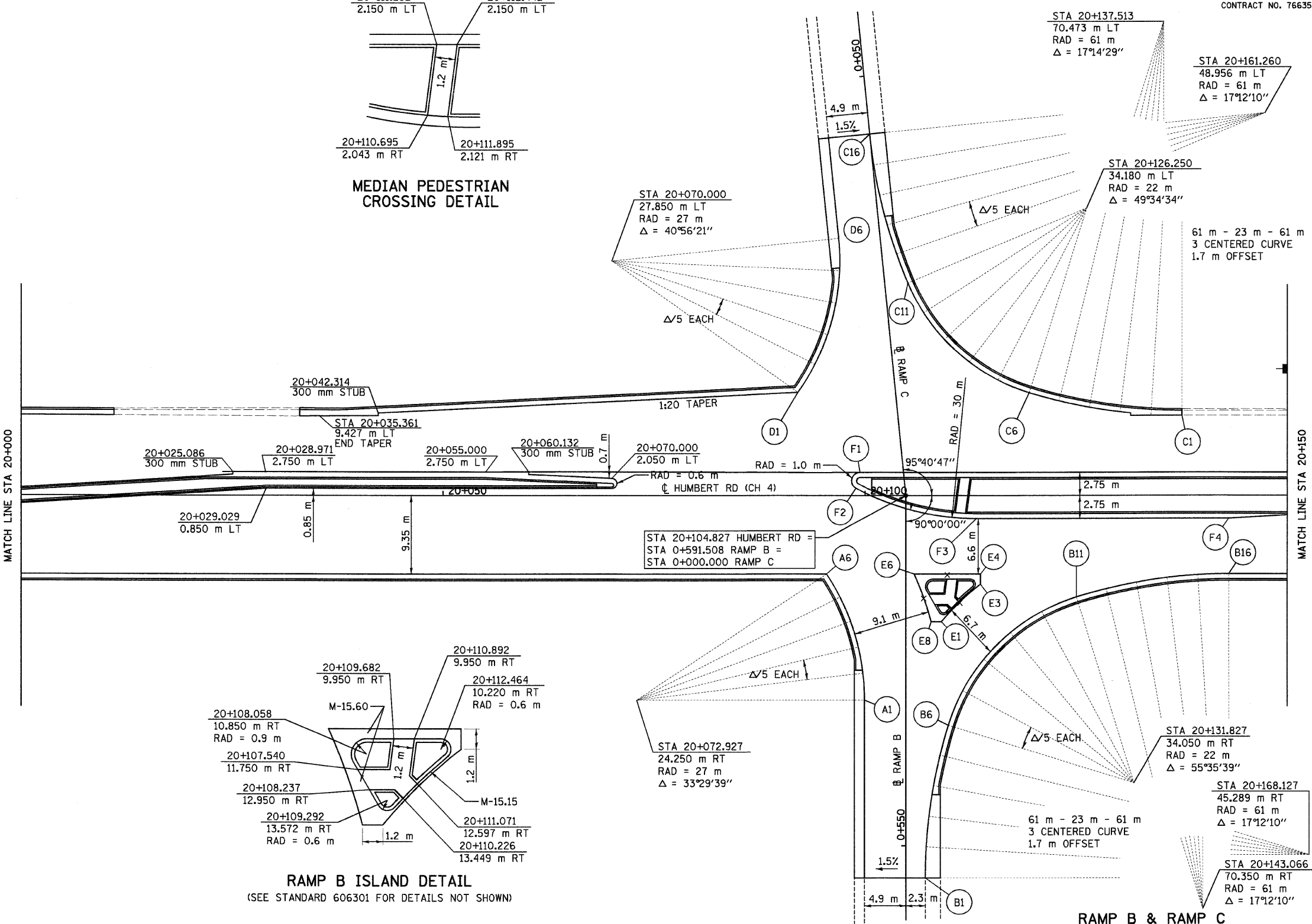
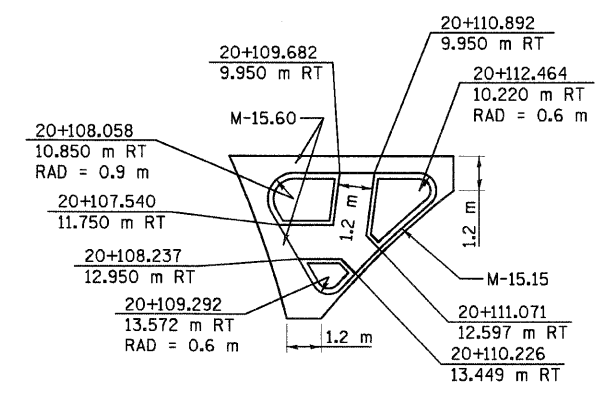
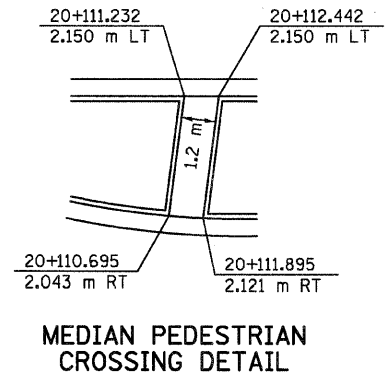
POINT	STATION	OFFSET	ELEVATION
C1	20+137.513	9.474 LT	188.434*
C2	20+133.843	9.584 LT	188.423
C3	20+130.188	9.914 LT	188.408
C4	20+126.559	10.465 LT	188.389
C5	20+122.969	11.232 LT	188.364
C6	20+119.433	12.214 LT	188.333
C7	20+115.731	13.727 LT	188.300
C8	0+015.036	9.052 LT	188.275
C9	0+018.002	6.369 LT	188.265
C10	0+021.387	4.240 LT	188.255
C11	0+025.090	2.729 LT	188.280
C12	0+028.620	1.751 LT	188.340
C13	0+032.202	0.988 LT	188.415
C14	0+035.823	0.440 LT	188.510
C15	0+039.471	0.110 LT	188.592
C16	0+043.132	0.000 LT	188.689

POINT	STATION	OFFSET	ELEVATION
D1	20+092.047	12.264 LT	188.268
D2	20+094.042	15.562 LT	188.250
D3	0+019.936	7.343 RT	188.250
D4	0+023.548	5.996 RT	188.310
D5	0+027.314	5.175 RT	188.420
D6	0+031.160	4.900 RT	188.501

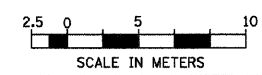
POINT	STATION	OFFSET	ELEVATION
E1	20+109.026	15.018 RT	188.342
E2	20+111.225	12.658 RT	188.362
E3	20+113.666	10.550 RT	188.385
E4	20+113.666	9.350 RT	188.407
E5	20+109.738	9.350 RT	188.397
E6	20+105.809	9.350 RT	188.388
E7	20+106.937	12.142 RT	188.384
E8	20+107.826	15.018 RT	188.381

POINT	STATION	OFFSET	ELEVATION
F1	20+099.392	2.750 LT	188.480
F2	20+098.916	0.871 LT	188.541
F3	20+113.204	2.750 RT	188.538
F4	20+143.066	2.750 RT	188.609

* - MATCH EXISTING PAVEMENT ELEVATIONS



STATIONS, OFFSETS, AND ELEVATIONS ARE FOR ULTIMATE PAVING
FOR PLAN AND PROFILE OF HUMBERT ROAD SEE SHEET 37



REVISIONS	
NAME	DATE

ILLINOIS DEPARTMENT OF TRANSPORTATION
INTERSECTION DETAILS
FAP 310 (IL 255)
SECTIONS 60-15-1, 60-15HB-1
MADISON COUNTY
DRAWN BY
CHECKED BY
DATE

p:\00files\00024\dhumbert\details\misc\in\det\015b-rampbc.dgn