

NW 1/4, SEC 24, R 6 N, R 10 W, 3RD PM

NE 1/4, SEC 23, R 6 N, R 10 W, 3RD PM

F.A.P. RTE.	SECTION	COUNTY	TOTAL SHEETS	SHEET NO.
310	60-15-1, 60-15HB-1	MADISON	238	107
STA.		TO STA.		
FED. ROAD DIST. NO.		ILLINOIS FED. AID PROJECT		
CONTRACT NO. 76635				

**CURVE RAMP A-2**

PI STA = 0+298.731  
 $\Delta = 24^\circ 03' 05''$  (RT)  
 R = 260.000 m  
 T = 55.387 m  
 L = 109.142 m  
 E = 5.834 m  
 PC STA = 0+243.344  
 PT STA = 0+352.486  
 SE = 6.0%  
 SE ATTAINED STA 0+203.000 TO STA 0+263.000  
 SE REMOVED STA 0+312.486 TO STA 0+464.273

FOR ENTRANCE RAMP A TERMINAL DETAILS AND PROFILE SEE SHEETS 80 & 151-152

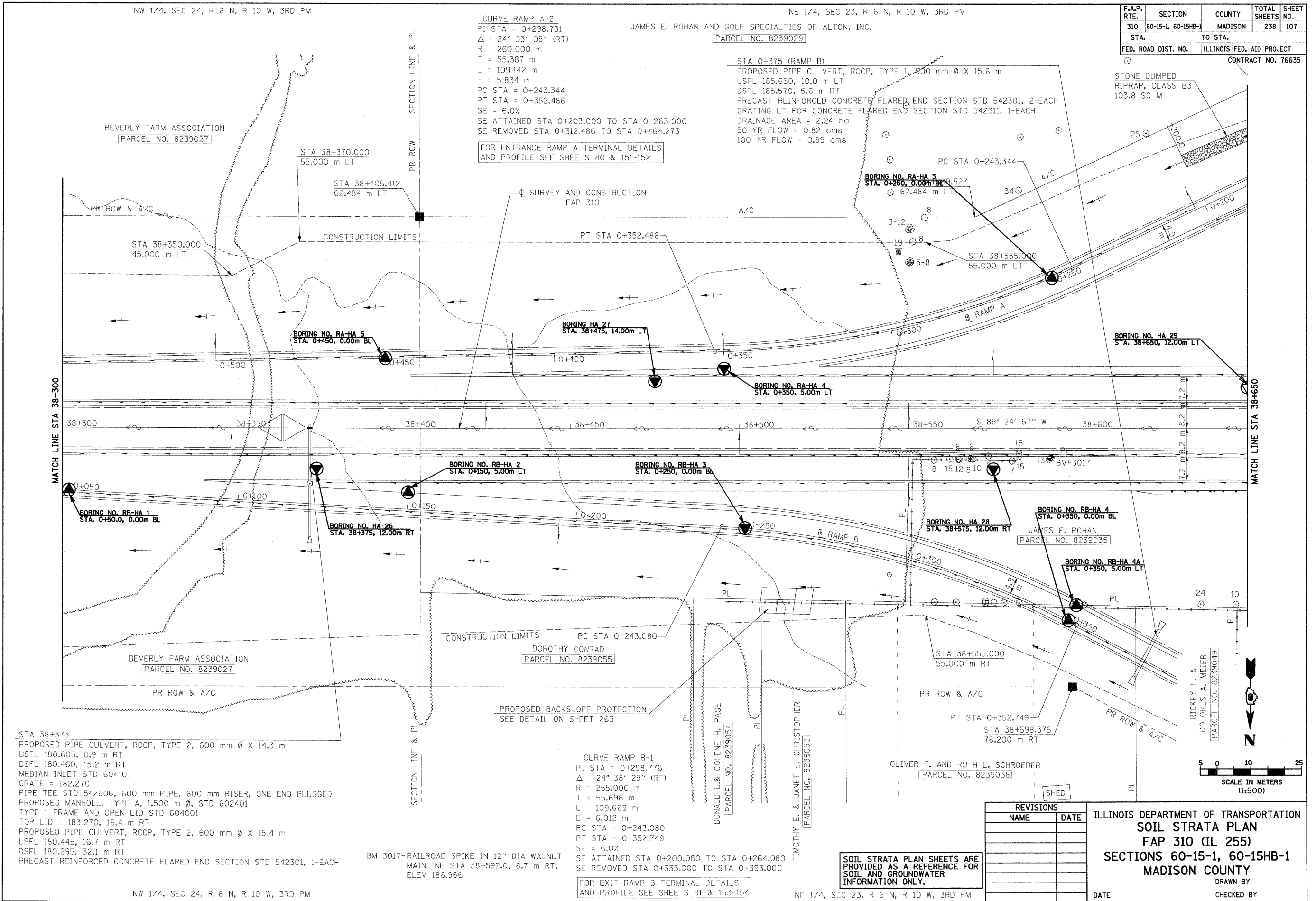
JAMES E. ROHAN AND GOLF SPECIALTIES OF ALTON, INC.

[PARCEL NO. 8239029]

**STA 0+375 (RAMP B)**

PROPOSED PIPE CULVERT, RCCP, TYPE 1, 900 mm  $\phi$  X 15.6 m  
 USFL 185.650, 10.0 m LT  
 DSFL 185.570, 5.6 m RT  
 PRECAST REINFORCED CONCRETE FLARED END SECTION STD 542301, 2-EACH  
 GRATING LT FOR CONCRETE FLARED END SECTION STD 542311, 1-EACH  
 DRAINAGE AREA = 2.24 ha  
 50 YR FLOW = 0.82 cms  
 100 YR FLOW = 0.99 cms

STONE DUMPED RIPRAP, CLASS B3  
103.8 SQ M



STA 38+373  
 PROPOSED PIPE CULVERT, RCCP, TYPE 2, 600 mm  $\phi$  X 14.3 m  
 USFL 180.605, 0.9 m RT  
 DSFL 180.460, 15.2 m RT  
 MEDIAN INLET STD 604101  
 GRATE = 182.270  
 PIPE TEE STD 542606, 600 mm PIPE, 600 mm RISER, ONE END PLUGGED  
 PROPOSED MANHOLE, TYPE A, 1,500 m  $\phi$ , STD 602401  
 TYPE 1 FRAME AND OPEN LID STD 604001  
 TOP LID = 183.270, 16.4 m RT  
 PROPOSED PIPE CULVERT, RCCP, TYPE 2, 600 mm  $\phi$  X 15.4 m  
 USFL 180.445, 16.7 m RT  
 DSFL 180.295, 32.1 m RT  
 PRECAST REINFORCED CONCRETE FLARED END SECTION STD 542301, 1-EACH

**CURVE RAMP B-1**

PI STA = 0+298.776  
 $\Delta = 24^\circ 38' 29''$  (RT)  
 R = 255.000 m  
 T = 55.696 m  
 L = 109.669 m  
 E = 6.012 m  
 PC STA = 0+243.080  
 PT STA = 0+352.749  
 SE = 6.0%  
 SE ATTAINED STA 0+200.080 TO STA 0+264.080  
 SE REMOVED STA 0+333.000 TO STA 0+393.000

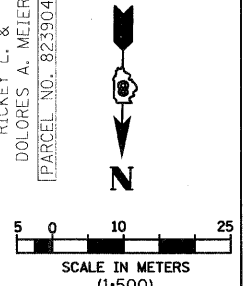
FOR EXIT RAMP B TERMINAL DETAILS AND PROFILE SEE SHEETS 81 & 153-154

SOIL STRATA PLAN SHEETS ARE PROVIDED AS A REFERENCE FOR SOIL AND GROUNDWATER INFORMATION ONLY.

REVISIONS	
NAME	DATE

ILLINOIS DEPARTMENT OF TRANSPORTATION  
**SOIL STRATA PLAN**  
**FAP 310 (IL 255)**  
**SECTIONS 60-15-1, 60-15HB-1**  
**MADISON COUNTY**

DRAWN BY \_\_\_\_\_  
 CHECKED BY \_\_\_\_\_  
 DATE \_\_\_\_\_



p:\00f1es\00224\dhumbert\soi1strata\ssplan015a10.dgn

NW 1/4, SEC 24, R 6 N, R 10 W, 3RD PM

NE 1/4, SEC 23, R 6 N, R 10 W, 3RD PM

IL 255 (FAP 310), STA 38+300 TO STA 38+650