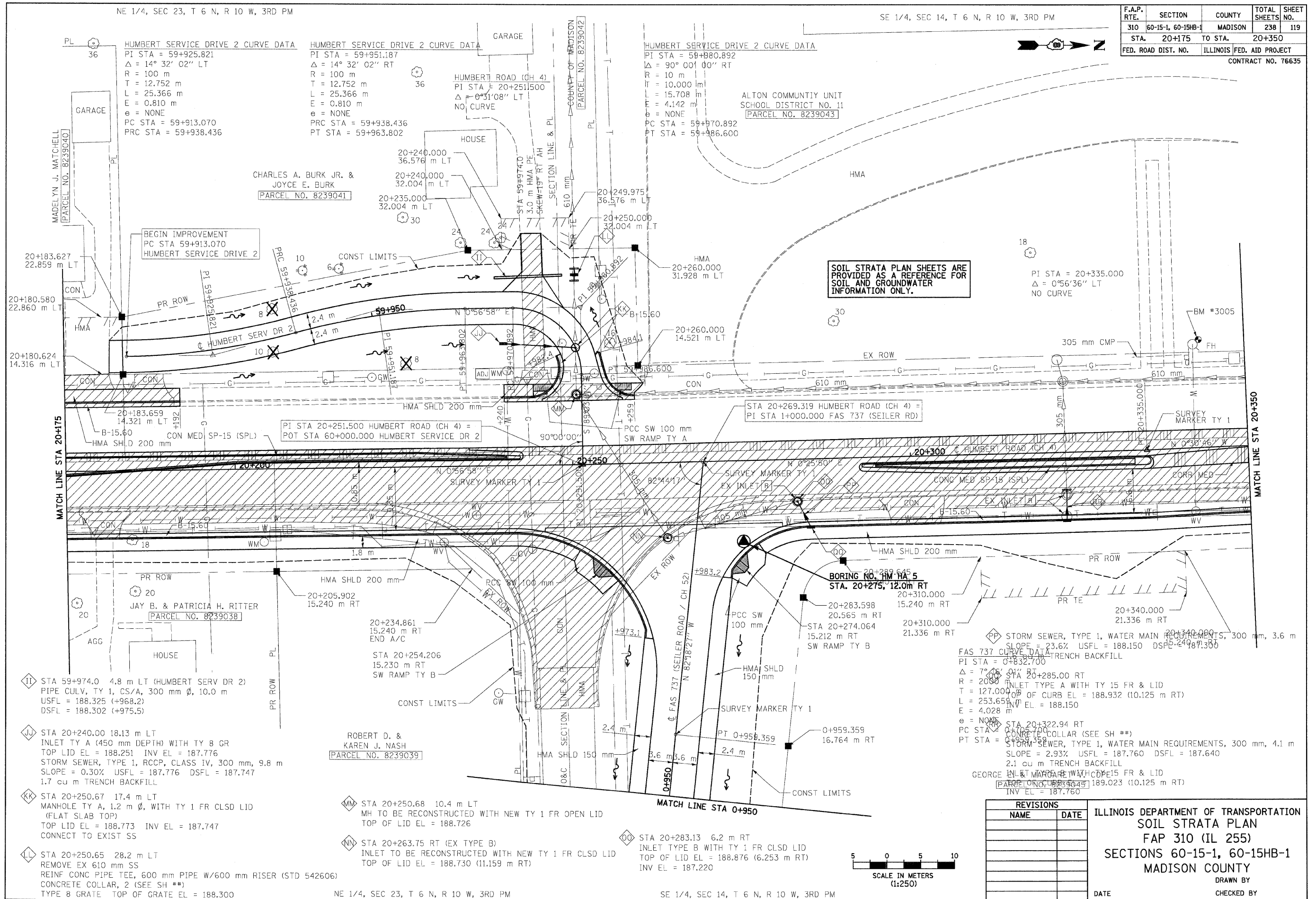


NE 1/4, SEC 23, T 6 N, R 10 W, 3RD PM

SE 1/4, SEC 14, T 6 N, R 10 W, 3RD PM

F.A.P. RTE.	SECTION	COUNTY	TOTAL SHEETS	SHEET NO.
310	60-15-1, 60-15HB-1	MADISON	238	119
STA. 20+175 TO STA. 20+350				
FED. ROAD DIST. NO.		ILLINOIS	FED. AID PROJECT	
CONTRACT NO. 76635				



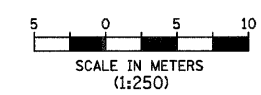
- II STA 59+974.0 4.8 m LT (HUMBERT SERV DR 2) PIPE CULV, TY 1, CS/A, 300 mm Ø, 10.0 m USFL = 188.325 (+968.2) DSFL = 188.302 (+975.5)
- JJ STA 20+240.00 18.13 m LT INLET TY A (450 mm DEPTH) WITH TY B GR TOP LID EL = 188.251 INV EL = 187.776 STORM SEWER, TYPE 1, RCCP, CLASS IV, 300 mm, 9.8 m SLOPE = 0.30% USFL = 187.776 DSFL = 187.747 1.7 cu m TRENCH BACKFILL
- KK STA 20+250.67 17.4 m LT MANHOLE TY A, 1.2 m Ø, WITH TY 1 FR CLSD LID (FLAT SLAB TOP) TOP LID EL = 188.773 INV EL = 187.747 CONNECT TO EXIST SS
- LL STA 20+250.65 28.2 m LT REMOVE EX 610 mm SS REINF CONC PIPE TEE, 600 mm PIPE W/600 mm RISER (STD 542606) CONCRETE COLLAR, 2 (SEE SH \*\*) TYPE 8 GRATE TOP OF GRATE EL = 188.300

- MM STA 20+250.68 10.4 m LT MH TO BE RECONSTRUCTED WITH NEW TY 1 FR OPEN LID TOP OF LID EL = 188.726
- NN STA 20+263.75 RT (EX TYPE B) INLET TO BE RECONSTRUCTED WITH NEW TY 1 FR CLSD LID TOP OF LID EL = 188.730 (11.159 m RT)

- OO STA 20+283.13 6.2 m RT INLET TYPE B WITH TY 1 FR CLSD LID TOP OF LID EL = 188.876 (6.253 m RT) INV EL = 187.220

REVISIONS	
NAME	DATE

ILLINOIS DEPARTMENT OF TRANSPORTATION  
SOIL STRATA PLAN  
FAP 310 (IL 255)  
SECTIONS 60-15-1, 60-15HB-1  
MADISON COUNTY  
DRAWN BY  
CHECKED BY  
DATE



p:\00f1es\00224\dhumber\soilstrata\sspl\an015b05.dgn