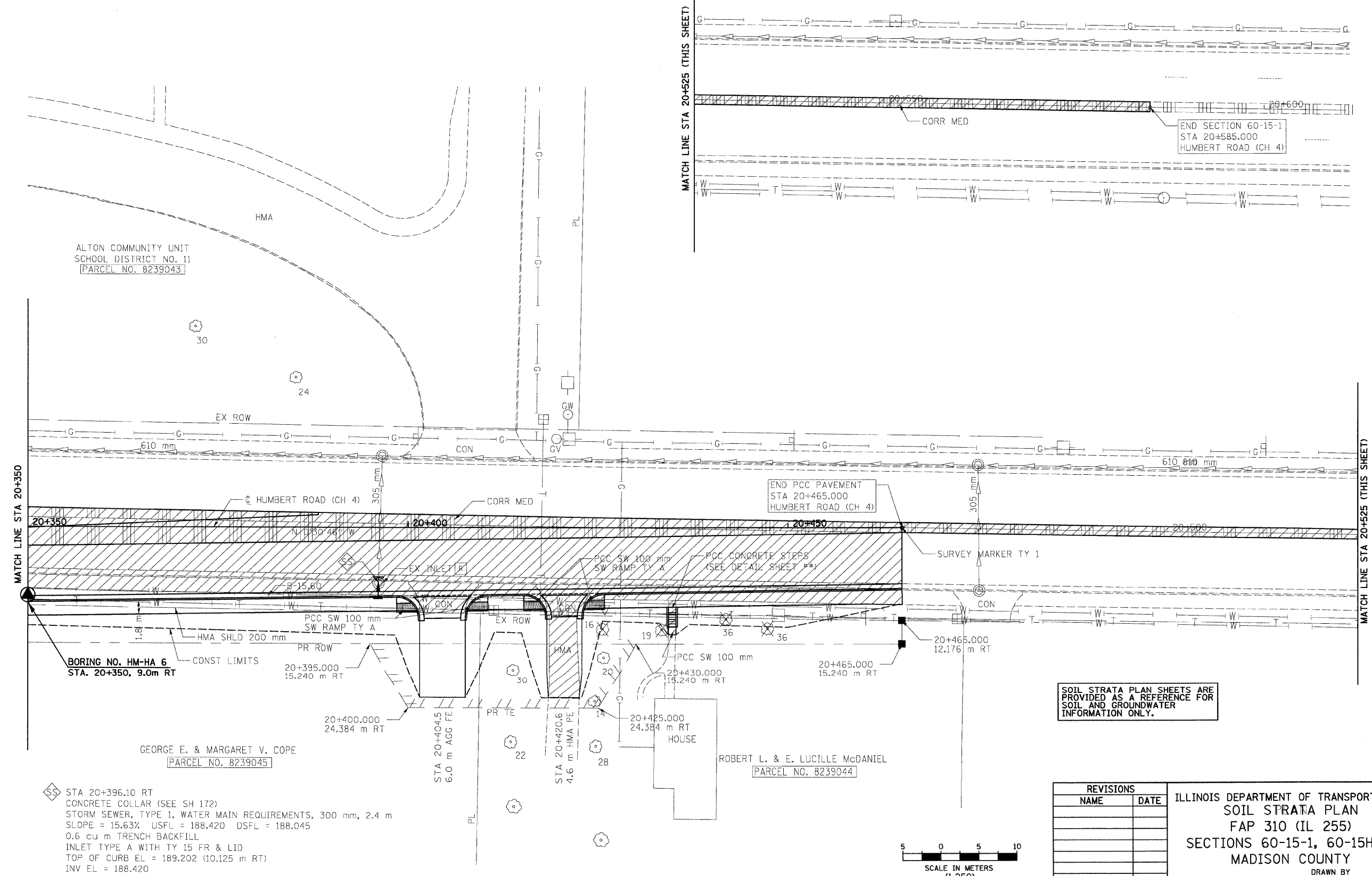


F.A.P. RTE.	SECTION	COUNTY	TOTAL SHEETS	SHEET NO.
310	60-15-1, 60-15HB-1	MADISON	238	121
STA. 20+350 TO STA. 20+525		FED. ROAD DIST. NO. ILLINOIS FED. AID PROJECT		
CONTRACT NO. 76635				

NOTE: EXISTING CONCRETE MEDIAN REMOVAL AND REPLACEMENT FROM STATION 20+465 TO STATION 20+585 REQUIRED FOR STAGE CONSTRUCTION AND TRAFFIC CONTROL.



ALTON COMMUNITY UNIT  
SCHOOL DISTRICT NO. 11  
PARCEL NO. 8239043

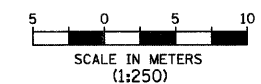
BORING NO. HM-HA 6  
STA. 20+350, 9.0m RT

GEORGE E. & MARGARET V. COPE  
PARCEL NO. 8239045

ROBERT L. & E. LUCILLE McDANIEL  
PARCEL NO. 8239044

SOIL STRATA PLAN SHEETS ARE PROVIDED AS A REFERENCE FOR SOIL AND GROUNDWATER INFORMATION ONLY.

SS STA 20+396.10 RT  
CONCRETE COLLAR (SEE SH 172)  
STORM SEWER, TYPE 1, WATER MAIN REQUIREMENTS, 300 mm, 2.4 m  
SLOPE = 15.63% USFL = 188.420 DSFL = 188.045  
0.6 cu m TRENCH BACKFILL  
INLET TYPE A WITH TY 15 FR & LID  
TOP OF CURB EL = 189.202 (10.125 m RT)  
INV EL = 188.420



REVISIONS	
NAME	DATE

ILLINOIS DEPARTMENT OF TRANSPORTATION  
SOIL STRATA PLAN  
FAP 310 (IL 255)  
SECTIONS 60-15-1, 60-15HB-1  
MADISON COUNTY

DRAWN BY  
CHECKED BY  
DATE

HUMBERT ROAD STA 20+350 TO STA 20+465

p:\200f\iles\0024\dhumber\soils\strata\esplan\15b06.dgn