

ROUTE NO.	SECTION	COUNTY	TOTAL SHEETS	SHEET NO.
F. A. P. 310	*	MADISON	239	124
FED. ROAD DIST. NO. 1	ILLINOIS	FED. AID PROJECT		

SHEET NO. 2
48 SHEETS

* 60-15HB-1 CONTRACT NO. 76635

GENERAL NOTES

Fasteners shall be AASHTO M164 Type 1, mechanically galvanized bolts. Bolts M22, open holes 24 mm ϕ , unless otherwise noted.

Calculated mass of Structural Steel = 222,680 kg (M270M Grade 345)
13,650 kg (M270M Grade 250)

The inorganic zinc rich primer / Acrylic / Acrylic Paint System shall be used for shop and field painting of new structural steel except where otherwise noted. The color of the final finish coat for all interior surfaces shall be gray, Munsell No. 5B 7/1. The color of the final finish coat for the exterior and bottom flange of the fascia girders shall be Reddish Brown, Munsell No. 2.5 YR 3/4. See special provision for "Cleaning and Painting New Metal Structures".

Concrete Sealer shall be applied to seat areas of the abutments.

The structural steel bearing plates of the Elastomeric Bearing Assembly shall conform to the requirements of AASHTO M 270M Grade 345.

All construction joints shall be bonded.

No field welding is permitted except as specified in the contract documents.

Reinforcement bars shall conform to the requirements of ASTM A 706M Gr 420 (IL Modified). See Special Provisions.

Reinforcement bars designated (E) shall be epoxy coated.

Bearing seat surfaces shall be constructed or adjusted to their designated elevations within a tolerance of 3 mm. Adjustment shall be made either by grinding the surface or by shimming the bearings.

Slope wall shall be reinforced with welded wire fabric, 152 x 152-MW25.8 x MW25.8 with a mass of 2.91 kg/m².

The embankment configuration shown shall be the minimum embankment that must be constructed prior to construction of the abutments.

All cross frames shall be installed as steel is erected and secured with erection pins and bolts except as otherwise noted. Individual cross frames at supports may be temporarily disconnected to install bearing anchor rods.

Load carrying components designated "NTR" shall conform to the Supplemental Requirements for Notch Toughness, Zone 2.

The Contractor shall drive test piles to 110% of the nominal required bearing specified in production locations at substructures specified or approved by the Engineer before ordering the remainder of piles.

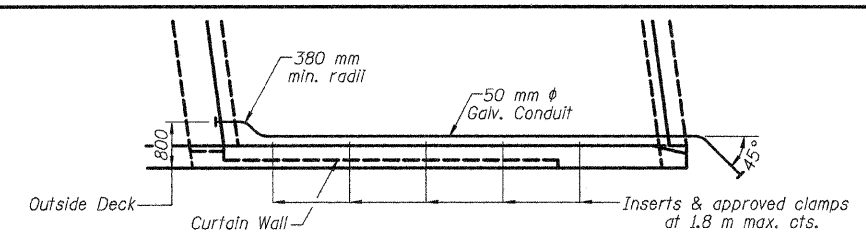
The contractor shall drive two (2) metal shell test piles in a permanent location shown on the following chart as directed by the Engineer before ordering the remainder of piles.

	E. Appr. Bent	E. Abut.	W. Abut.	W. Appr. Bent
N.B. Structure			1	
S.B. Structure		1		

Piles shall be driven through 380 mm diameter precored holes extending to elevation 187.5 at East Approach Bent & Elevation 187.5 at West Approach Bent according to Article 512.09(c) of the Standard Specifications. Cost included in driving piles.

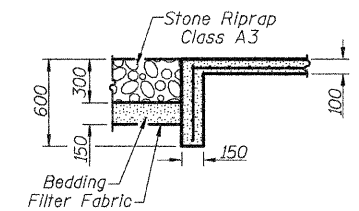
All dimensions are in millimeters (mm) except as noted.

Slip Forming Parapets are not allowed.

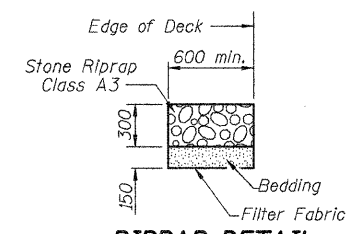


Notes:
50 mm ϕ Galv. Conduit shall be Sch. 40 pipe. Extend to clear Appr. Bent at a point outside of the shoulder. Cost included with "Concrete Superstructure"
See Sections A-A and B-B on Sheets 14, 16, 18 & 20 of 48 for additional detail.
See Sheet 1 of 48 for locations.

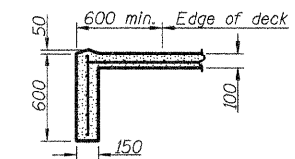
PARTIAL PLAN OF VAULTED ABUTMENT
Showing Electrical Conduit



SECTION B-B
SECTION BETWEEN RIPRAP AND CONCRETE SLOPEWALL



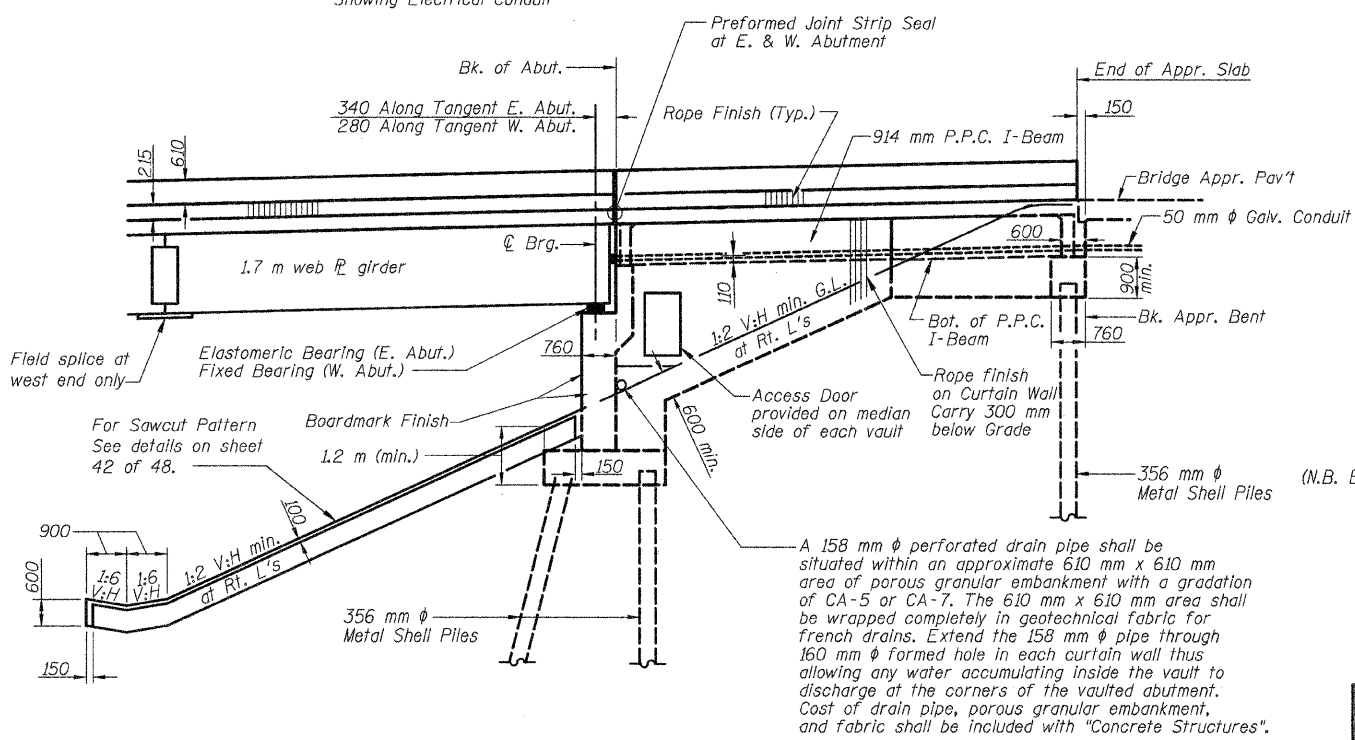
RIPRAP DETAIL



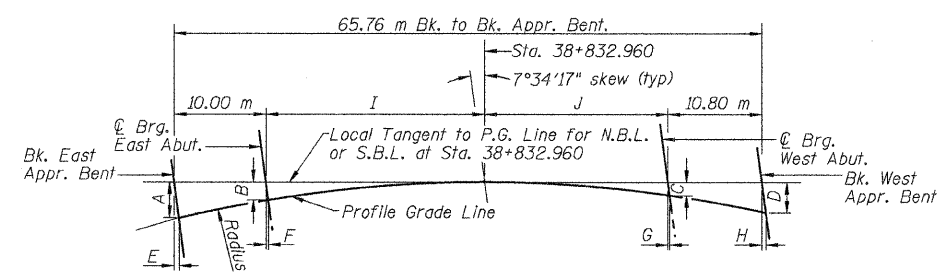
SECTION A-A

STATION 38+829.909
BUILT 200_ BY
STATE OF ILLINOIS
F.A.P. RT. 310 SEC. 60-15HB-1
LOADING MS18
STR. NO. 060-0308
NAME PLATE
See Std. 515001
(2 Required)

(N.B. Bridge shown, S.B. Bridge same except Str. No. 060-0309)



VAULTED ABUTMENT AND SLOPEWALL DETAILS
(Dimension are at Right L's, unless noted)



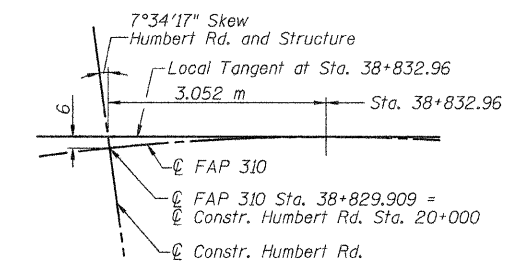
	A	B	C	D	E	F	G	H	I	J	Radius
S.B. Structure	788	405	245	591	105	54	33	79	25.33 m	19.63 m	788.2 m
N.B. Structure	708	346	309	693	94	46	41	92	23.15 m	21.81 m	771.8 m

OFFSET SKETCH

TOTAL BILL OF MATERIAL

ITEM	UNIT	SUPER	SUB	TOTAL
Elastomeric Bearing Assembly, Type I	each	12		12
Furnishing and Erecting Structural Steel	Lump Sum	1		1
Stud Shear Connectors	each	2976		2976
Test Pile Metal Shells	each		2	2
Name Plates	each	2		2
Furnishing and Erecting Precast Prestressed Concrete I-Beams, 914 mm	m	233.7		233.7
Stone Riprap, Class A3	m ²			297
Filter Fabric	m ²			297
Protective Coat	m ²	1978		1978
Structure Excavation	m ³		889	889
Preformed Joint Strip Seal	m	54.0		54.0
Concrete Structures	m ³		430.7	430.7
Concrete Superstructure	m ³	490.0		490.0
Bridge Deck Grooving	m ²	1674		1674
Reinforcement Bars, Epoxy Coated	kg	67,000		95,230
Furnishing Metal Shell Piles 356mm x 6.35mm	m		2000.5	2000.5
Driving Piles	m		2000.5	2000.5
Concrete Sealer	m ²		40	40
Slope Wall, Special	m ²			865
Form Liner Textured Surface	m ²	66	322	388

** Quantity includes Approach Slab.



LOCAL TANGENT DETAIL

TOTAL BILL OF MATERIAL & GENERAL NOTES
FAP RTE 310 (IL RTE 255) OVER
CH ROUTE 4 (HUMBERT ROAD)
SECTION 60-15HB-1
MADISON COUNTY
STATION 38+829.909
S.N. 060-0308 (NB) & 060-0309 (SB)

Klingner & Assoc., P.C.

2/23/2009 12:23:42 PM p:\00f\1es\000024\HUMBERT-Bridge-Plans\060-0308B1-B2-B3.dgn

DESIGNED	ADL
CHECKED	WLW
DRAWN	DGM/ADL
CHECKED	WLW