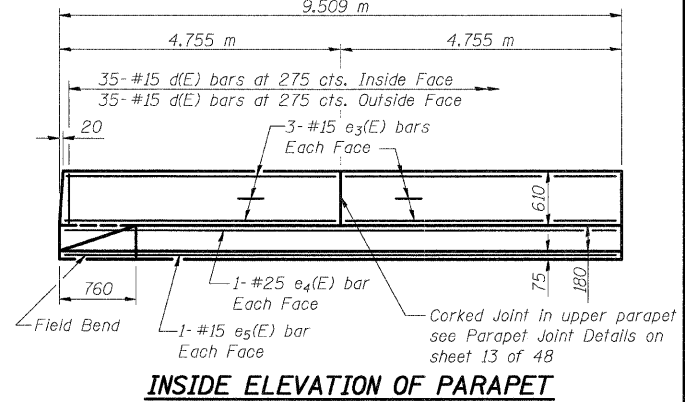
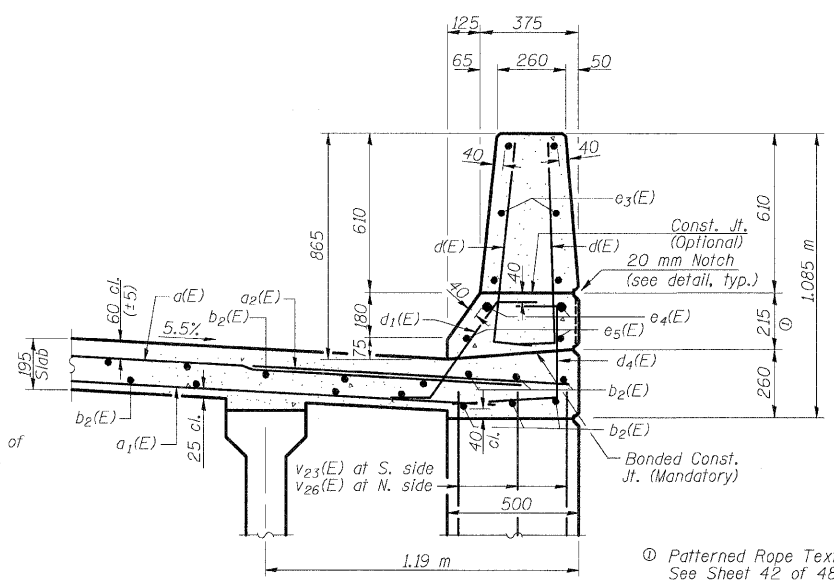
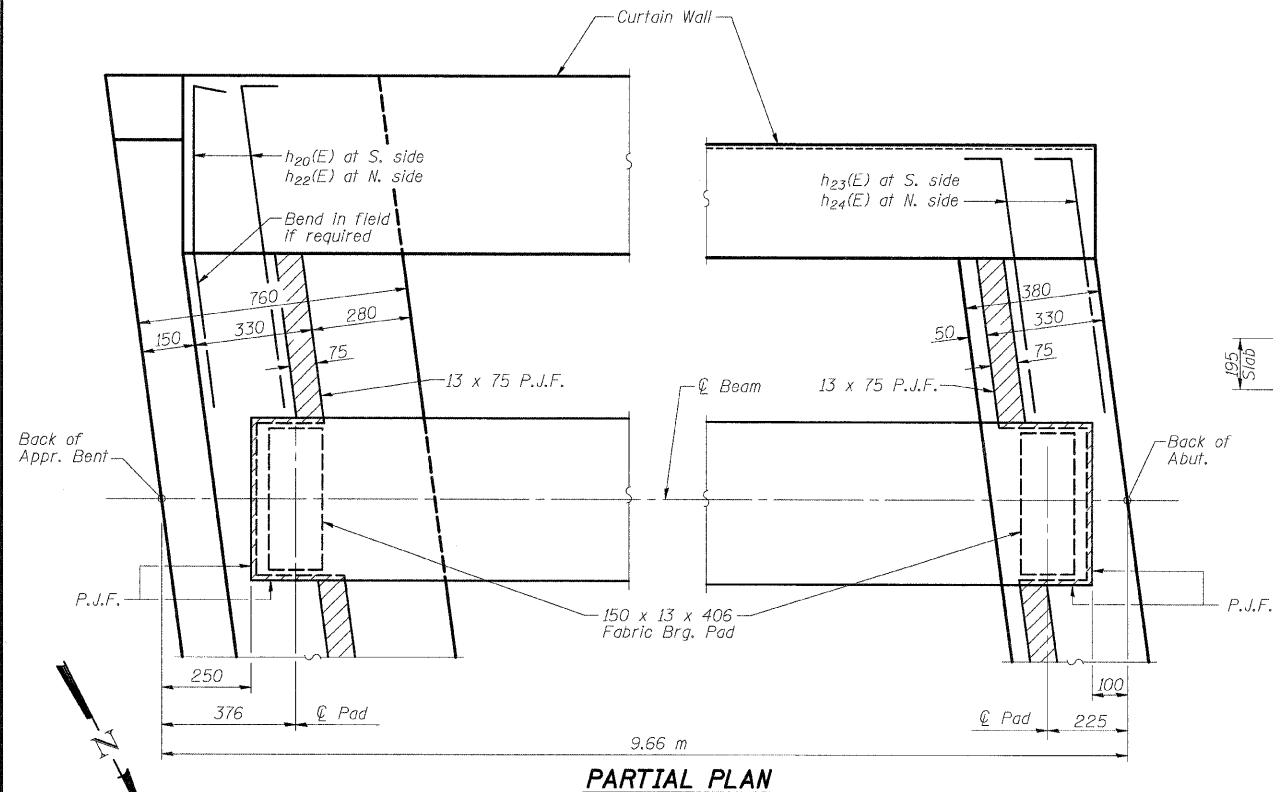


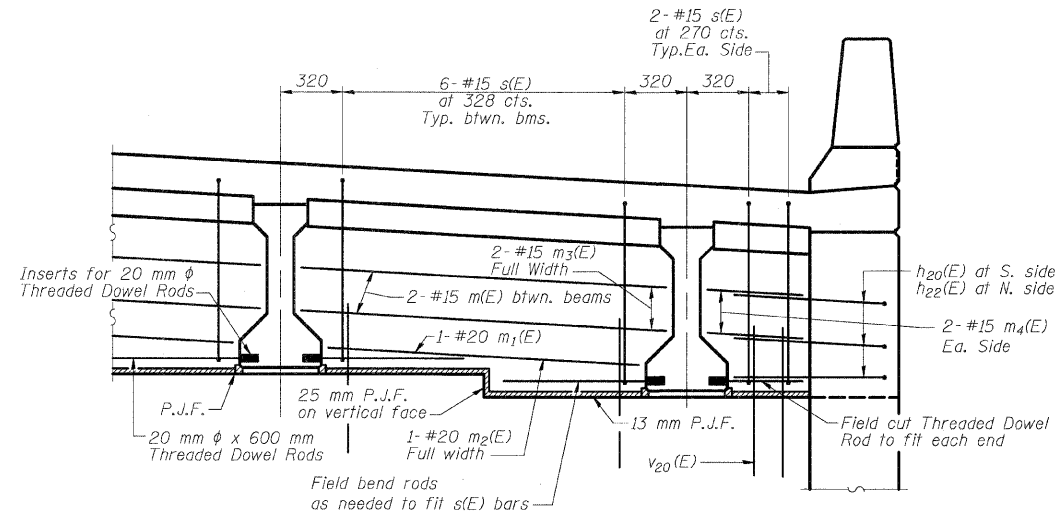
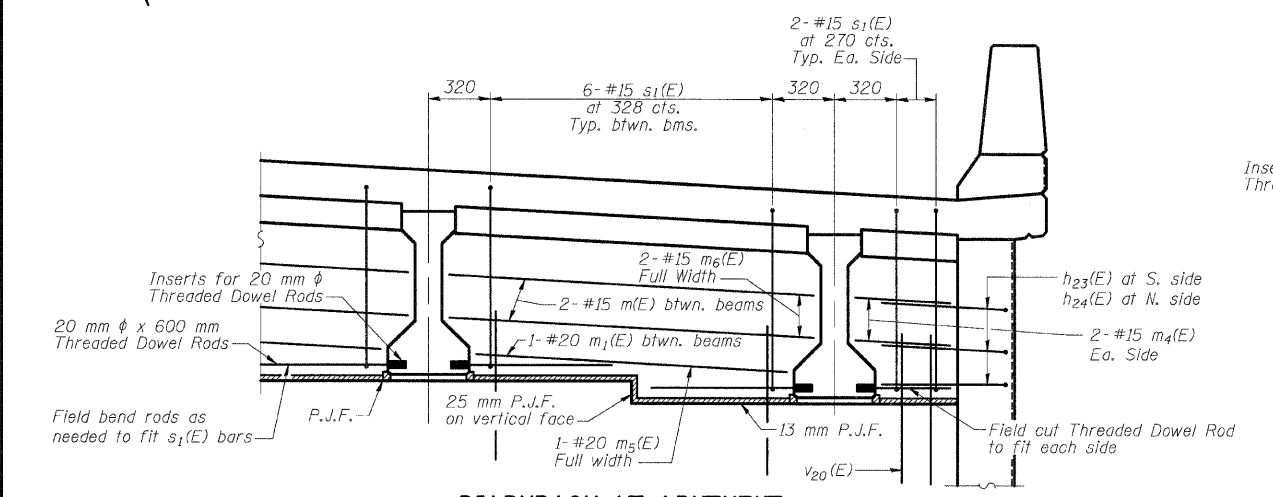
12/10/2007 12:01:35 PM
 pr:\001\115\020024\humber-r-bridge-pl\ma\060-0308\appr-coach\abs\dgn

ROUTE NO.	SECTION	COUNTY	TOTAL SHEETS	SHEET NO.	SHEET NO. 15 48 SHEETS
F.A.P. 310	*	MADISON	239	137	
* 60-15HB-1 CONTRACT NO. 76635					



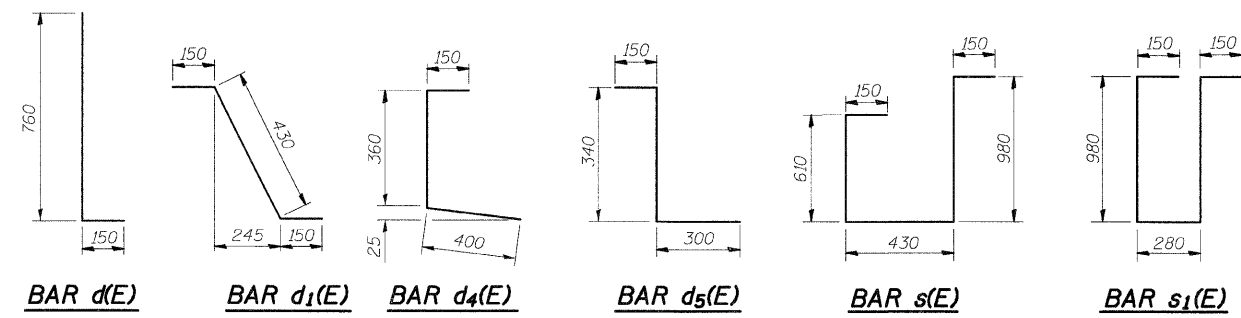
**N.B. EAST APPROACH SLAB
BILL OF MATERIAL**

Bar	No.	Size (#)	Length (m)	Shape
d(E)	59	#15	13.34	—
d1(E)	43	#15	13.14	—
d2(E)	58	#20	1.20	—
d3(E)	4	#15	13.40	—
b2(E)	99	#15	9.42	—
d(E)	140	#15	0.91	L
d1(E)	64	#15	0.73	L
d4(E)	70	#15	0.91	L
d5(E)	6	#15	0.79	L
e3(E)	24	#15	4.67	—
e4(E)	4	#25	9.42	—
e5(E)	4	#15	9.42	—
m(E)	20	#15	2.05	—
m1(E)	10	#20	1.75	—
m2(E)	1	#20	13.42	—
m3(E)	2	#15	13.42	—
m4(E)	8	#15	0.53	—
m5(E)	1	#20	12.81	—
m6(E)	2	#15	12.81	—
s(E)	34	#15	2.32	□
s1(E)	34	#15	2.54	□
v20(E)	45	#15	0.75	—
Reinforcement Bars, Epoxy Coated			kg	5170
Concrete Superstructure			m ³	41.3
Bridge Deck Grooving			m ²	122
Protective Coat			m ²	144
Form Liner Textured Surface			m ²	5



DIAPHRAGM AT ABUTMENT
 For location of m(E), m1(E), m4(E), m5(E), and m6(E) bars see Section A-A on Sheet 14 of 48. Dimensions are perpendicular to ϕ Beam.

DIAPHRAGM AT APPROACH BENT
 For location of m(E), m1(E), m2(E), m3(E), and m4(E) bars see Section B-B on sheet 14 of 48. Dimensions are perpendicular to ϕ Beam.



Notes:
 See sheets 29, 30, and 31 of 48 for h20(E), h22(E), h23(E), h24(E), v20(E), v23(E) and v26(E) bars. Work this sheet with sheet 14 of 48.

DESIGNED	ADL
CHECKED	WLW
DRAWN	ADL/DGM
CHECKED	WLW

SA-ID-R (M) 4-30-97

**N.B. EAST APPROACH SLAB (2 OF 2)
 FAP RTE. 310 (IL RTE. 255) OVER
 CH ROUTE 4 (HUMBERT ROAD)
 SECTION 60-15HB-1
 MADISON COUNTY
 STATION 38+829.909
 SN 060-0308 (NB) & 060-0309 (SB)**

Klingner & Assoc., P.C.