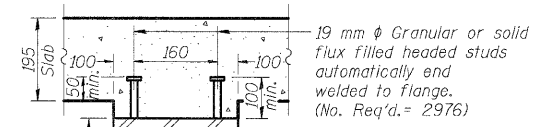
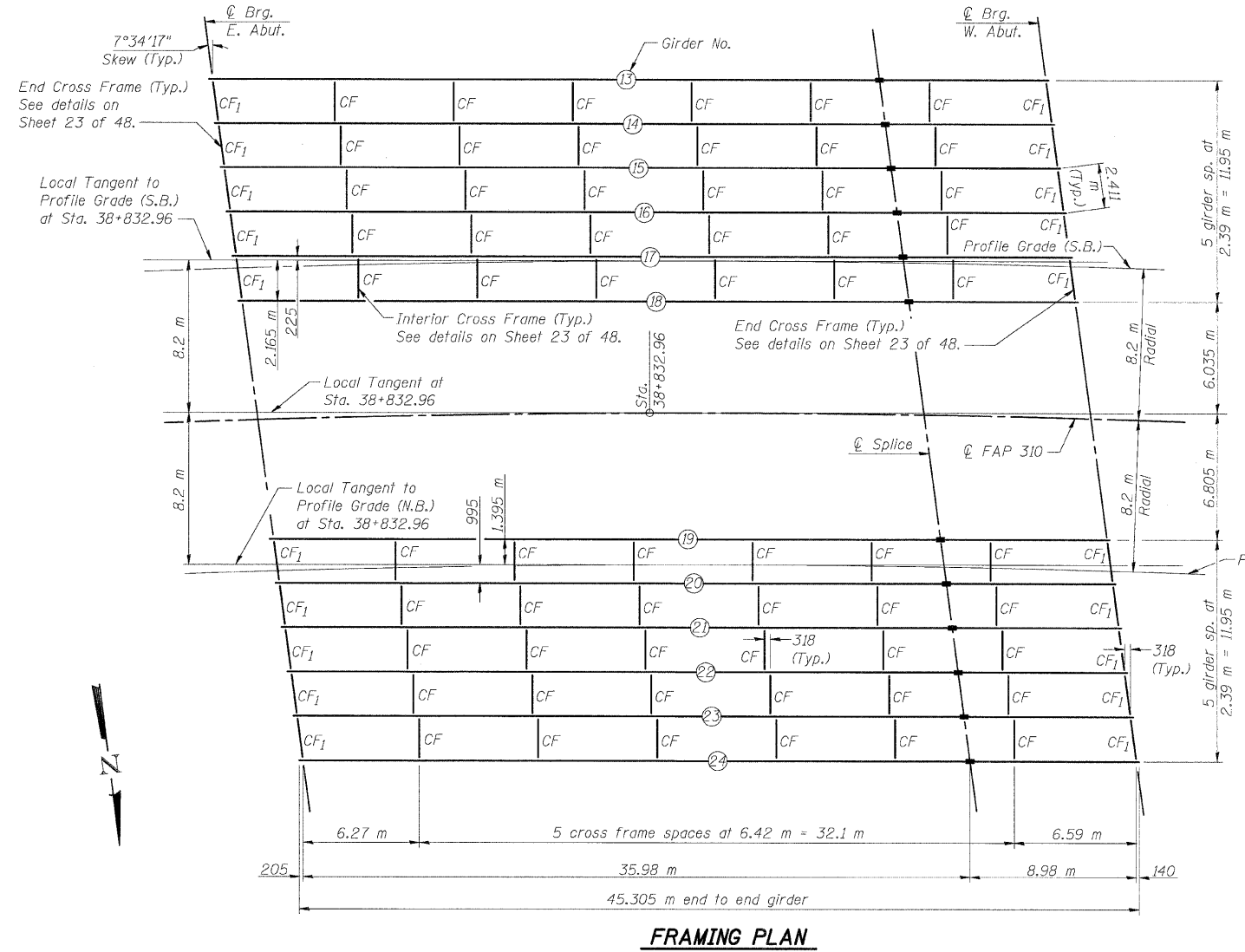


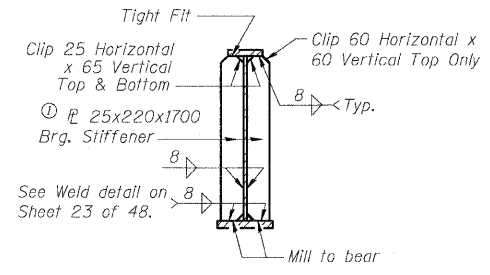
12/10/2007 12:02:49 PM

p:\00f\1es\000024\humber+bridge\bridge-plans\060-0308\girders.dgn

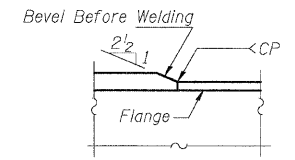
ROUTE NO.	SECTION	COUNTY	STA. SHEETS	SHEET NO.
F.A.P. 310	*	MADISON	239 144	48 SHEETS
* 60-15HB-1 CONTRACT NO. 76635				



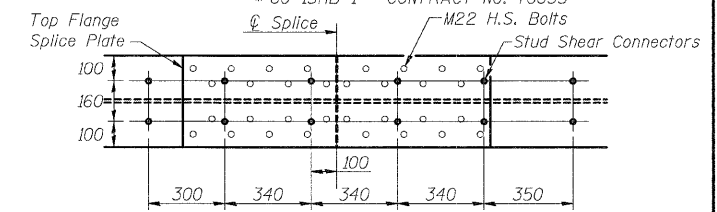
SECTION A-A



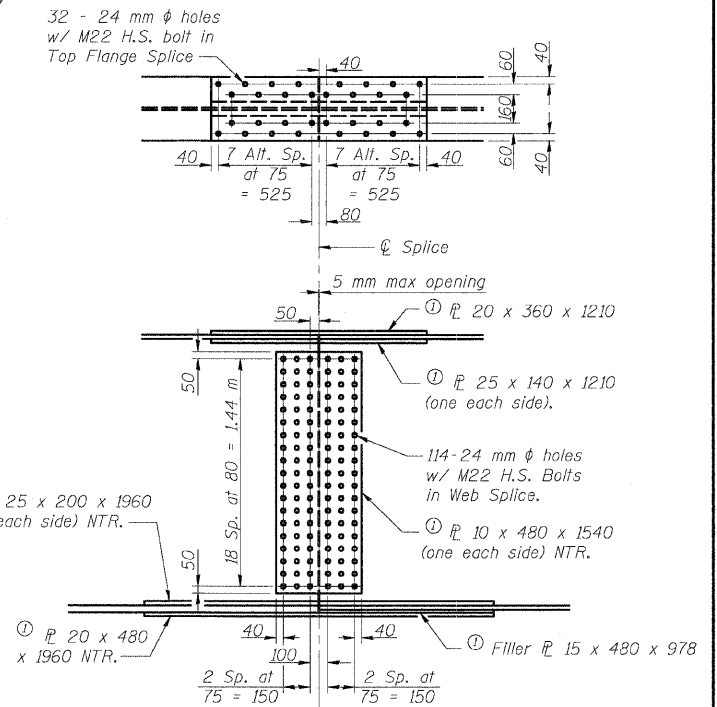
SECTION THRU BEARING STIFFENER



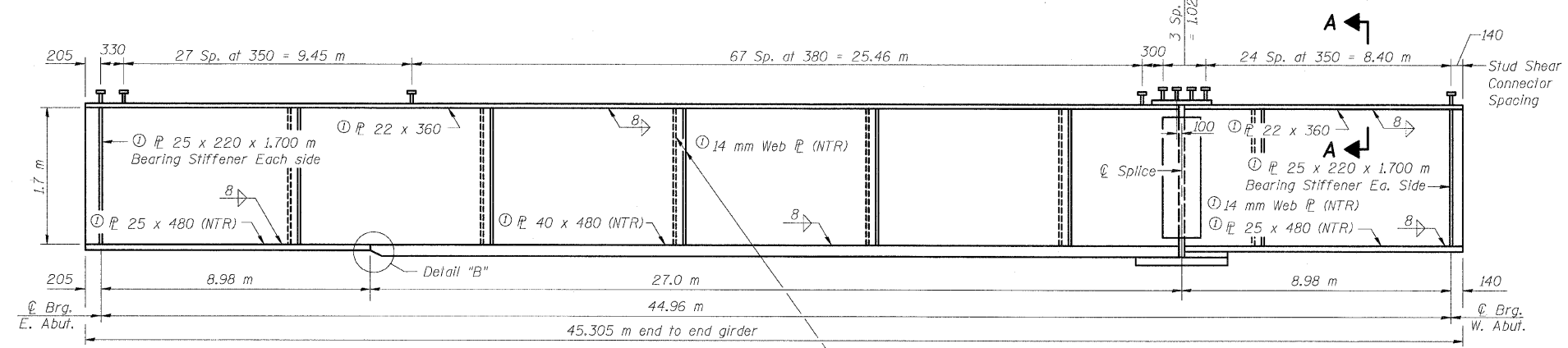
DETAIL "B"



STUD SHEAR CONNECTOR PLAN OVER SPLICE



FIELD SPLICE DETAIL



GIRDER ELEVATION

"NTR" denotes plates to which notch toughness requirements are applicable.

DESIGNED	ADL
CHECKED	WLW
DRAWN	ADL/DGM
CHECKED	WLW

Ⓢ Indicates structural steel conforming to AASHTO M270M Grade 345.

Note: Work this sheet with sheet 23 of 48.

GIRDER DETAILS & FRAMING PLAN
FAP RTE. 310 (IL RTE. 255) OVER
CH ROUTE 4 (HUMBERT ROAD)
SECTION 60-15HB-1
MADISON COUNTY
STATION 38+829.909
SN 060-0308 (NB) & 060-0309 (SB)

Klingner & Assoc., P.C.