

12:07:59 PM
12/10/2007

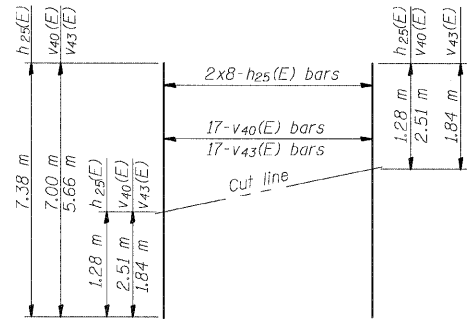
Notes:
Space reinforcement in cap to miss anchor bolts.
Work this sheet with sheets 33 & 34 of 48.
Four steps monolithically with cap.

APPR. BENT-PILE DATA

Type & Size: Metal Shell - 356 mm dia. x 6.35 mm walls
Nominal Required Bearing: 900 KN
Allowable Resistance Available: 300 KN
Est. Length: 18.0 m
No. Req'd.: 12

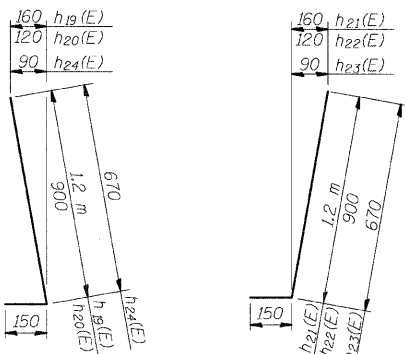
ABUT.-PILE DATA

Type & Size: Metal Shell - 356 mm dia. x 6.35 mm walls
Nominal Required Bearing: 1500 KN
Allowable Resistance Available: 500 KN
Est. Length: 15.0 m
No. Req'd.: 19 & 1 Test Pile



FIELD CUTTING DIAGRAM

Order h25(E), v40(E) and v43(E) bars full length. Cut to fit and use remainder of bars in opposite face of curtain wall.



BARS h19(E), h20(E) & h24(E)

BARS h21(E), h22(E) & h23(E)

BAR t(E)

DESIGNED	ADL
CHECKED	WLW
DRAWN	ADL/DGM
CHECKED	WLW

BAR n(E)

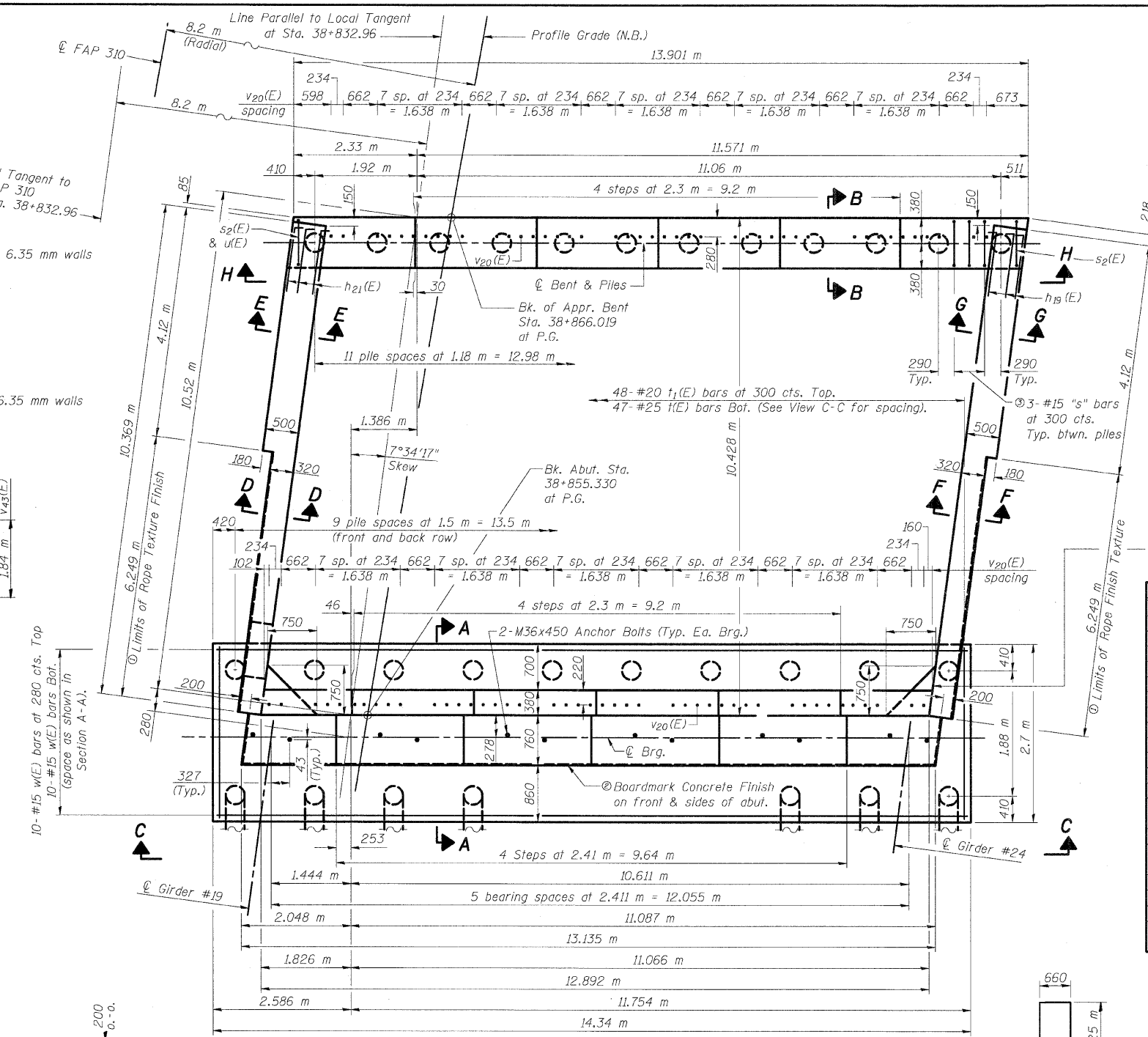
BAR h8(E)

BAR h9(E)

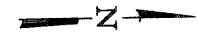
BARS s2(E) thru s5(E)

BARS v12(E) thru v17(E)

BARS v18(E) & v19(E)



PLAN



ROUTE NO.	SECTION	COUNTY	TOTAL SHEETS	SHEET NO.
F.A.P. 310	#	MADISON	239	154
* 60-15HB-1 CONTRACT NO. 76635				

**N.B. WEST ABUTMENT
BILL OF MATERIAL**

Bar	No.	Size	Length (m)	Shape
h(E)	20	#15	13.00	
h1(E)	12	#15	3.10	
h2(E)	2	#15	8.82	
h3(E)	4	#15	4.00	
h4(E)	4	#15	1.60	
h5(E)	6	#15	12.81	
h6(E)	10	#15	4.01	
h7(E)	2	#15	1.74	
h8(E)	16	#15	2.54	
h9(E)	16	#15	2.54	
h10(E)	16	#15	1.01	
h11(E)	23	#15	1.35	
h20(E)	6	#15	1.05	
h21(E)	25	#15	1.35	
h22(E)	6	#15	1.05	
h23(E)	6	#15	0.78	
h24(E)	6	#15	0.78	
h25(E)	12	#15	7.38	
h26(E)	12	#15	9.67	
h27(E)	16	#15	10.28	
h28(E)	4	#15	3.35	
h29(E)	2	#15	3.47	
h30(E)	8	#15	4.03	
h31(E)	6	#25	4.70	
h32(E)	4	#25	8.30	
n(E)	104	#25	2.33	
d(E)	6	#20	13.80	
d1(E)	11	#20	3.20	
d2(E)	2	#20	9.11	
d3(E)	3	#20	2.21	
s2(E)	18	#15	3.20	
s3(E)	6	#15	3.44	
s4(E)	6	#15	3.66	
s5(E)	5	#15	3.90	
t(E)	47	#25	3.16	
w(E)	20	#15	14.24	
u(E)	12	#15	3.16	
v12(E)	6	#15	3.29	
v13(E)	8	#15	3.41	
v14(E)	8	#15	3.53	
v15(E)	8	#15	3.66	
v16(E)	8	#15	3.78	
v17(E)	6	#15	3.90	
v18(E)	6	#15	3.36	
v19(E)	37	#15	3.56	
v20(E)	96	#15	0.90	
v27(E)	6	#20	2.92	
v28(E)	8	#20	3.04	
v29(E)	8	#20	3.17	
v30(E)	8	#20	3.29	
v31(E)	8	#20	3.41	
v32(E)	6	#20	3.54	
v33(E)	6	#25	2.92	
v34(E)	8	#25	3.04	
v35(E)	8	#25	3.17	
Concrete Structures	m ³	107.7		
Reinforcement Bars (Epoxy Coated)	kg	7090		
Structure Excavation	m ³	223		
Furnishing Metal Pile Shell 356 mm	m	501		
Driving Piles	m	501		
Test Pile Metal Shells	Each	1		
Concrete Sealer	m ²	10		
Form Liner Textured Surface	m ²	82		

① "s" bars include s2(E), s3(E), s4(E) or s5(E). See View H-H.

② Patterned Rope Texture Concrete (See Sheet 42 of 48 for details)

③ Random Width Boardmark Concrete (See Sheet 42 of 48 for details)

N.B. WEST ABUTMENT (1 OF 3)
FAP RTE. 310 (IL RTE. 255) OVER
CH ROUTE 4 (HUMBERT ROAD)
SECTION 60-15HB-1
MADISON COUNTY
STATION 38+829.909
SN 060-0308 (NB) & 060-0309 (SB)