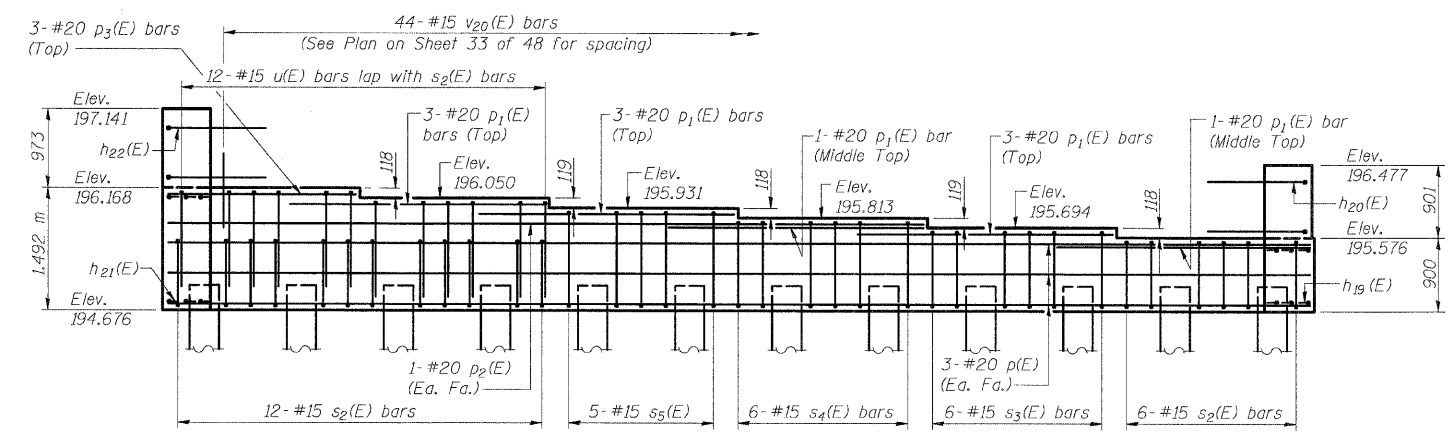
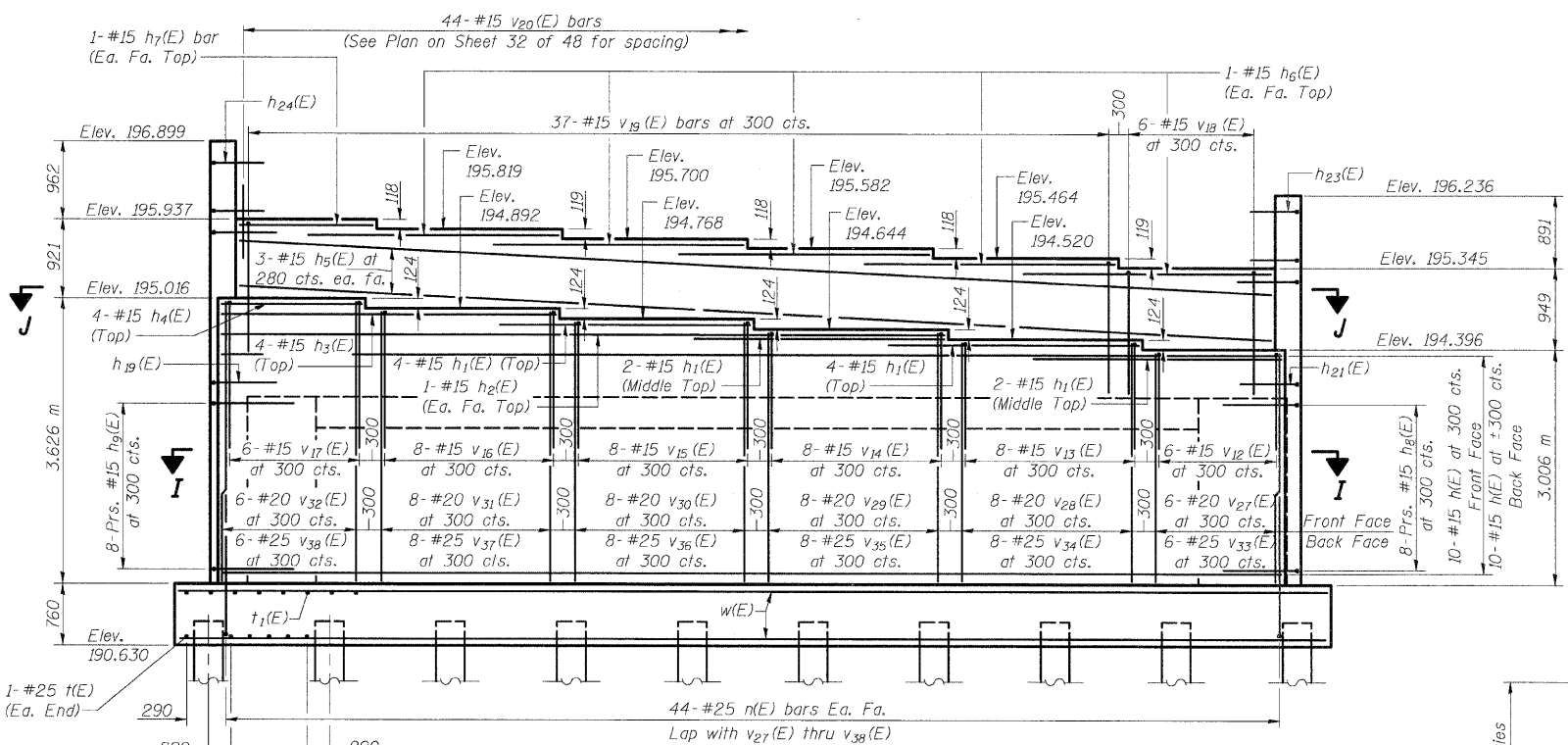


12/18/2007 12:07:59 PM
 P:\00F:\es\020224\chumber-t bridge-plans\060-0308\submittals.dgn

ROUTE NO.	SECTION	COUNTY	JOB NO.	SHEET NO.	SHEET NO. 33 48 SHEETS
F.A.P. 310	*	MADISON	239	155	
FED. ROAD DIST. NO. 7		ILLINOIS		FED. AID PROJECT	
* 60-15HB-1 CONTRACT NO. 76635					



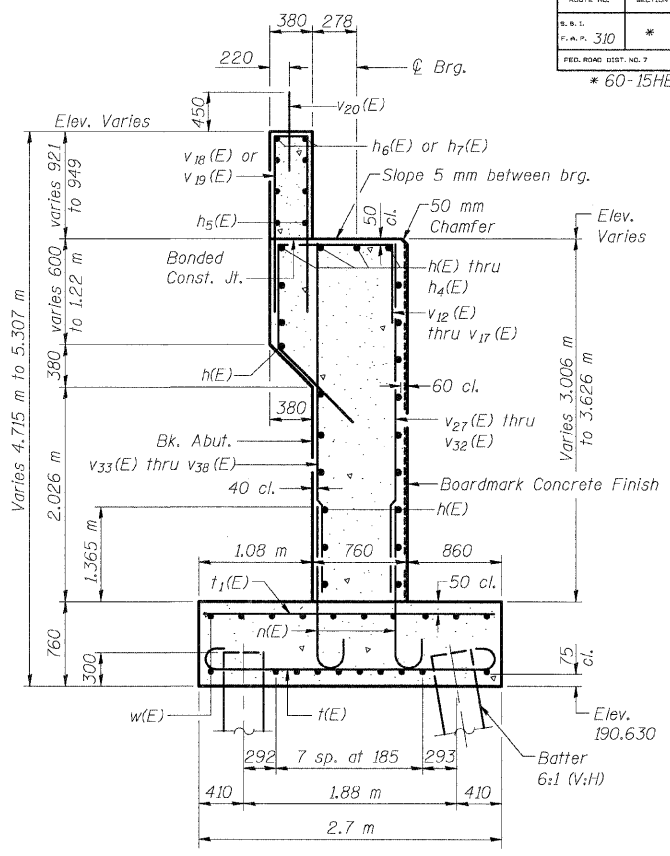
VIEW H-H
See Plan on Sheet 32 of 48 for spacing of $s_2(E)$ thru $s_5(E)$



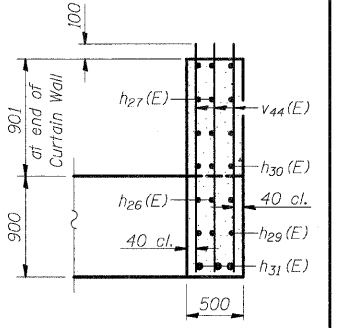
VIEW C-C

DESIGNED	ADL
CHECKED	WLW
DRAWN	ADL/DGM
CHECKED	WLW

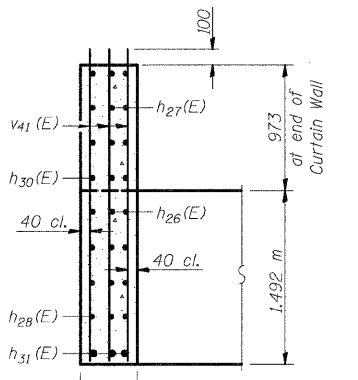
Note:
Work this sheet with sheets 32 & 34 of 48.



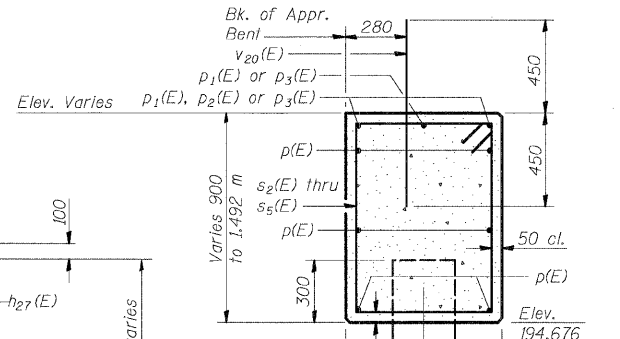
SECTION A-A



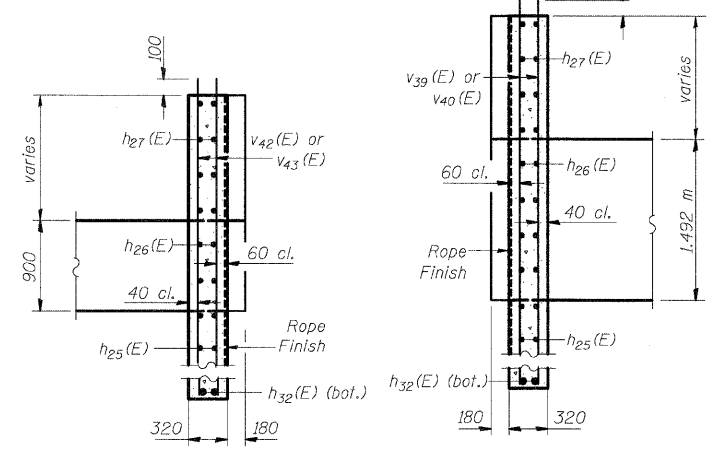
SECTION G-G



SECTION E-E



SECTION B-B



SECTION F-F

SECTION D-D

**N.B. WEST ABUTMENT (2 OF 3)
FAP RTE. 310 (IL RTE. 255) OVER
CH ROUTE 4 (HUMBERT ROAD)
SECTION 60-15HB-1
MADISON COUNTY
STATION 38+829.909
SN 060-0308 (NB) & 060-0309 (SB)**