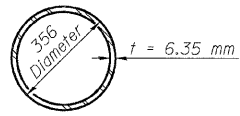


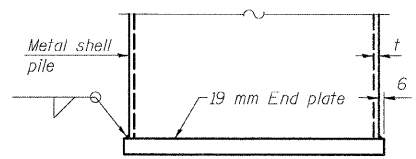
12/10/2007 12:10:54 PM

ps:\001\05\020202\HUMBERT-Br-dge-Br-dge-Plan\060-0309m.sc.dgn

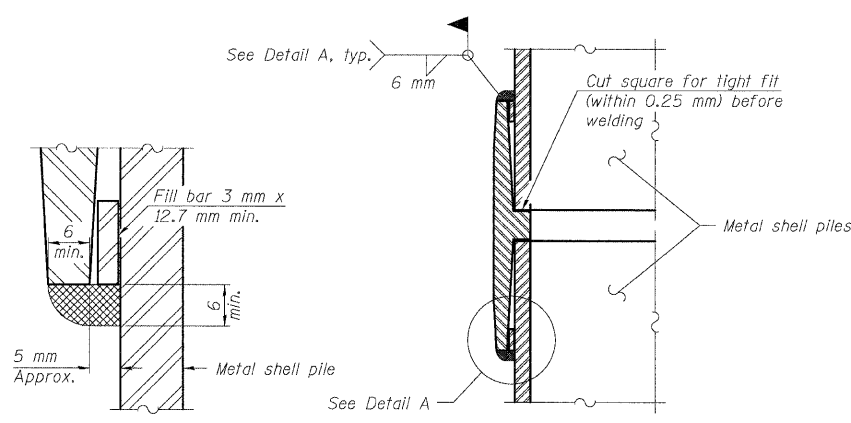
ROUTE NO.	SECTION	COUNTY	TOTAL SHEETS	SHEET NO.	SHEET NO. 41
F.A.P. 310	*	MADISON	239	163	48 SHEETS
FED. ROAD DIST. NO. Y		ILLINOIS	FED. AID PROJECT		
* 60-15HB-1 CONTRACT NO. 76635					



METAL SHELL PILE



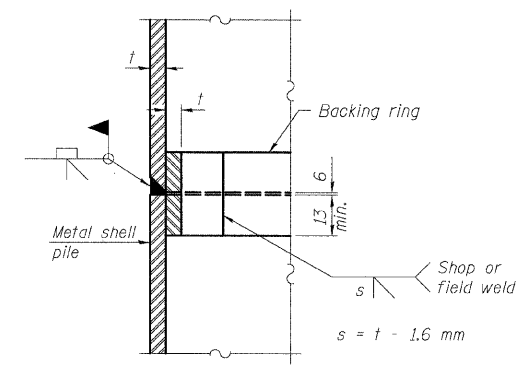
END PLATE ATTACHMENT



DETAIL A

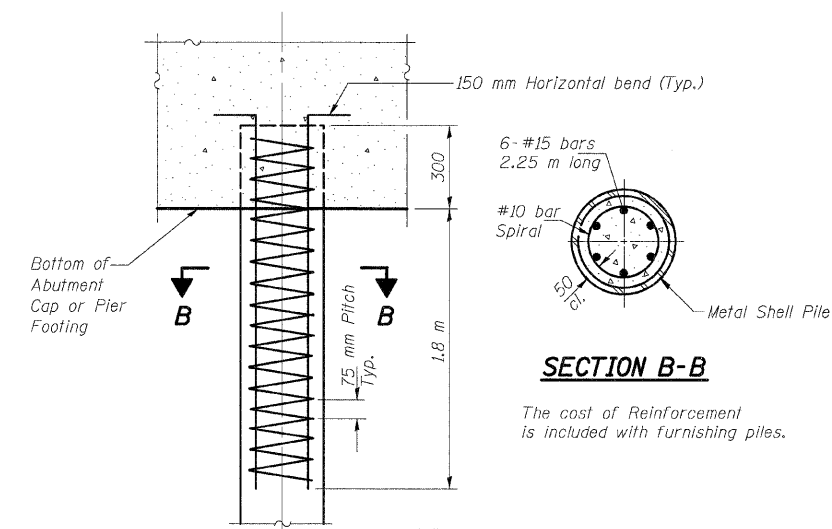
Notes:
 The 3 x 12.7 mm min. fill bar may be constructed of 2 bars with a 3 mm max. gap between them.
 Pile segments shall be driven to solid contact with splicer before welding.

WELDED COMMERCIAL SPLICE



COMPLETE PENETRATION WELD SPLICE

Backing ring made from pile shell. Remove segment to allow reducing circumference and vertically rejoin with partial joint penetration weld.



METAL SHELL REINFORCEMENT AT ABUTMENTS

SECTION B-B

The cost of Reinforcement is included with furnishing piles.

DESIGNED	ADL
CHECKED	WLW
DRAWN	ADL/DGM
CHECKED	WLW

Note:
 The metal shell piles shall be according to ASTM A 252 Grade 3.

PILE DETAILS
 FAP RTE. 310 (IL RTE. 255) OVER
 CH ROUTE 4 (HUMBERT ROAD)
 SECTION 60-15HB-1
 MADISON COUNTY
 STATION 38+829.909
 SN 060-0308 (NB) & 060-0309 (SB)